

MASON CITY, IOWA

AL-667 (FAA)

VORTAC MCW 114.9 Chan 96	APP CRS 175°	Rwy Idg 6501 TDZE 1213 Apt Elev 1213
----------------------------------------------	------------------------	-----------------------------------------------------------------

VOR/DME RWY 18

MASON CITY MUNI (MCW)

If local altimeter setting not received, use Charles City altimeter setting and increase all MDA 100 feet.

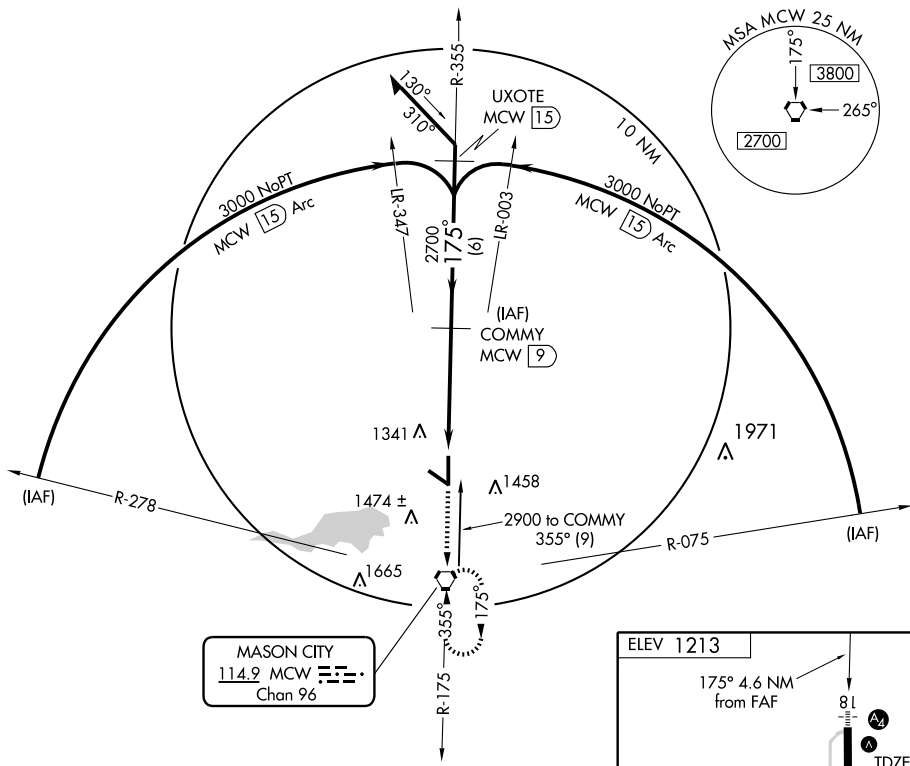


MISSED APPROACH: Climb to 3000 direct MCW VORTAC and hold.

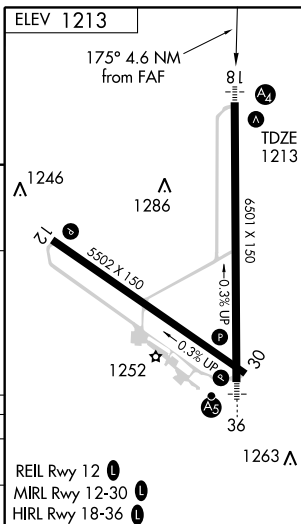
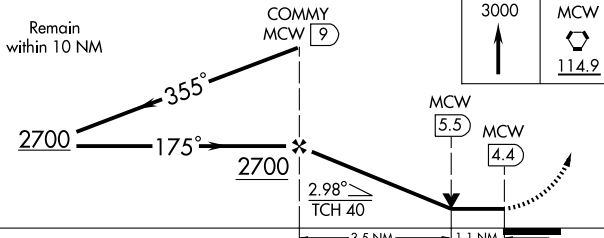
ASOS
120.3

MINNEAPOLIS CENTER
127.3 380.2

UNICOM
123.0 (CTAF)



MASON CITY
114.9 MCW
Chan 96



CATEGORY	A	B	C	D
S-18	1600-3/4	387 (400-3/4)		1600-1 1/4 387 (400-1 1/4)
CIRCLING	1660-1 447 (500-1)	1680-1 467 (500-1)	1760-1 1/2 547 (600-1 1/2)	1840-2 627 (700-2)

MASON CITY, IOWA
Amdt 4B 09071

43°09'N-93°20'W

MASON CITY MUNI (MCW) VOR/DME RWY 18

NC-3, 22 OCT 2009 to 19 NOV 2009

NC-3, 22 OCT 2009 to 19 NOV 2009