

VORTAC MCW <b>114.9</b> Chan <b>96</b>	APP CRS <b>356°</b>	Rwy Idg TDZE Apt Elev	<b>6501</b> <b>1193</b> <b>1213</b>
--	------------------------	-----------------------------	---

# VOR RWY 36

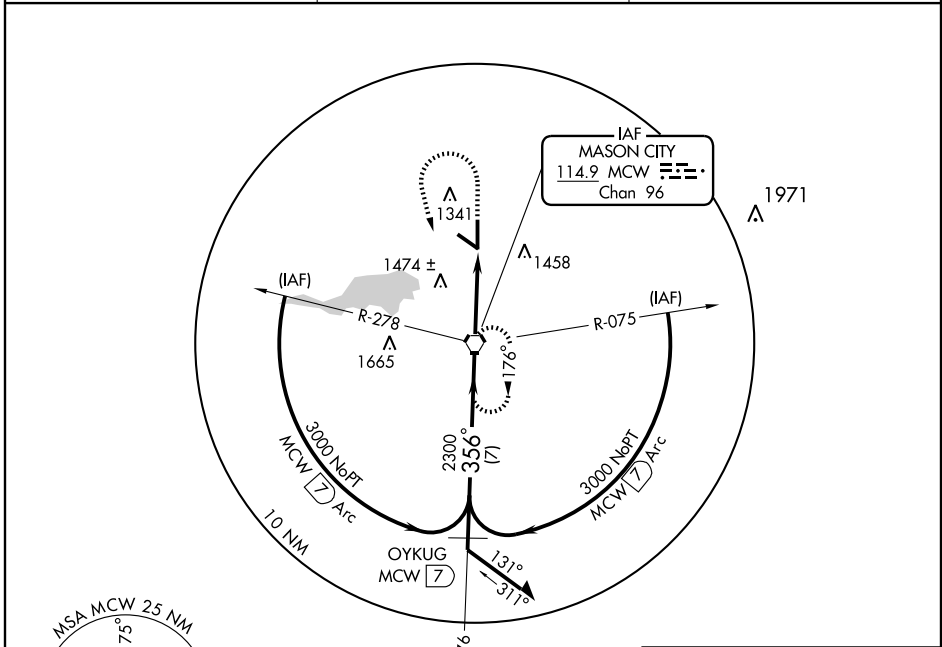
MASON CITY MUNI (MCW)

Inoperative table does not apply to Cat D.  
If local altimeter setting not received, use Charles City altimeter setting and increase all MDA 100 feet.

MALSRR 

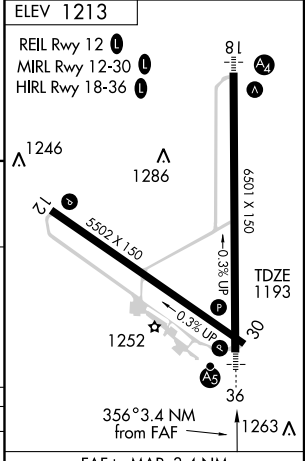
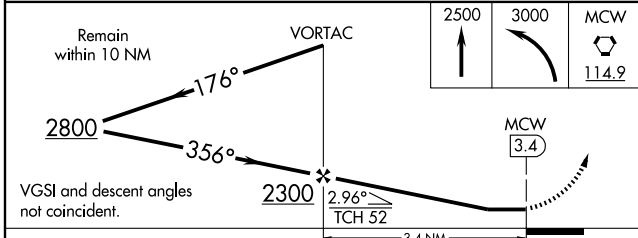
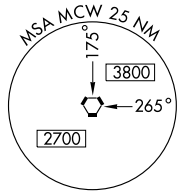
MISSED APPROACH: Climb to 2500, then climbing left turn to 3000 direct MCW VORTAC and hold.

ASOS <b>120.3</b>	MINNEAPOLIS CENTER <b>127.3 380.2</b>	UNICOM <b>123.0 (CTAF)</b>
----------------------	--	-------------------------------



NC-3, 22 OCT 2009 to 19 NOV 2009

NC-3, 22 OCT 2009 to 19 NOV 2009



CATEGORY	A	B	C	D
S-36	1640-1/2 447 (500-1)	447 (500-1/2)	1640-3/4 447 (500-3/4)	1640-1 447 (500-1)
CIRCLING	1660-1 447 (500-1)	1680-1 467 (500-1)	1760-1 1/2 547 (600-1 1/2)	1840-2 627 (700-2)

FAF to MAP 3.4 NM					
Knots	60	90	120	150	180
Min:Sec	3:24	2:16	1:42	1:22	1:08