

RNAV (GPS) RWY 30

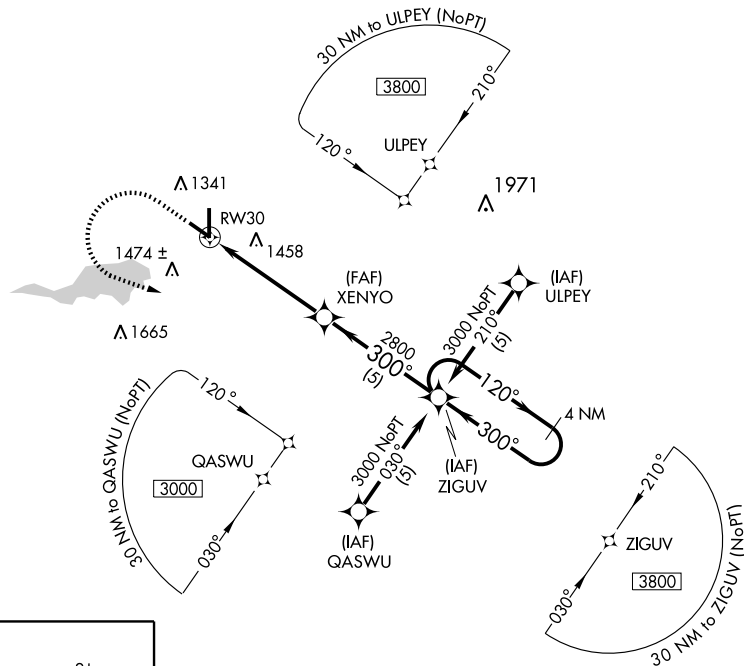
MASON CITY MUNI (MCW)

APP CRS 300°	Rwy Idg 5502
	TDZE 1195
	Apt Elev 1213

▲ NA If local altimeter setting not received, use Charles City altimeter setting and increase all MDA 100 feet.
DME/DME RNP- 0.3 NA.

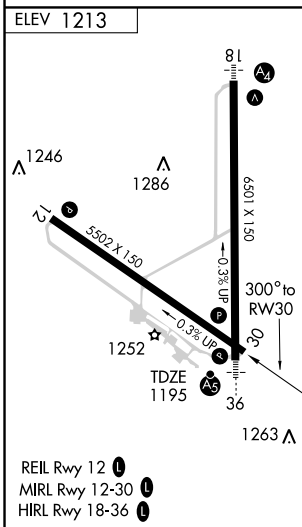
MISSED APPROACH: Climb to 2500, then climbing left turn to 3000 direct ZIGUV WP and hold.

ASOS 120.3	MINNEAPOLIS CENTER 127.3 380.2	UNICOM 123.0 (CTAF) 0
----------------------	--	---------------------------------



NC-3, 22 OCT 2009 to 19 NOV 2009

NC-3, 22 OCT 2009 to 19 NOV 2009



2500	3000	ZIGUV		
↑	↩	✧		
XENYO		ZIGUV	4 NM Holding Pattern	
1.6 NM to RW30		2800	120° →	← 300° 3000
1.6 NM		3.4 NM	5 NM	
RW30			VGSi and descent angles not coincident.	
CATEGORY	A	B	C	D
GLS DA	NA			
LNNAV/VNAV DA	NA			
LNNAV MDA	1720-1 525 (600-1)	1720-1½ 525 (600-1½)	1720-1¾ 525 (600-1¾)	1720-2 525 (600-2)
CIRCLING	1720-1 507 (600-1)	1760-1½ 547 (600-1½)	1840-2 627 (700-2)	