

# RNAV (GPS) RWY 18

MASON CITY MUNI (MCW)

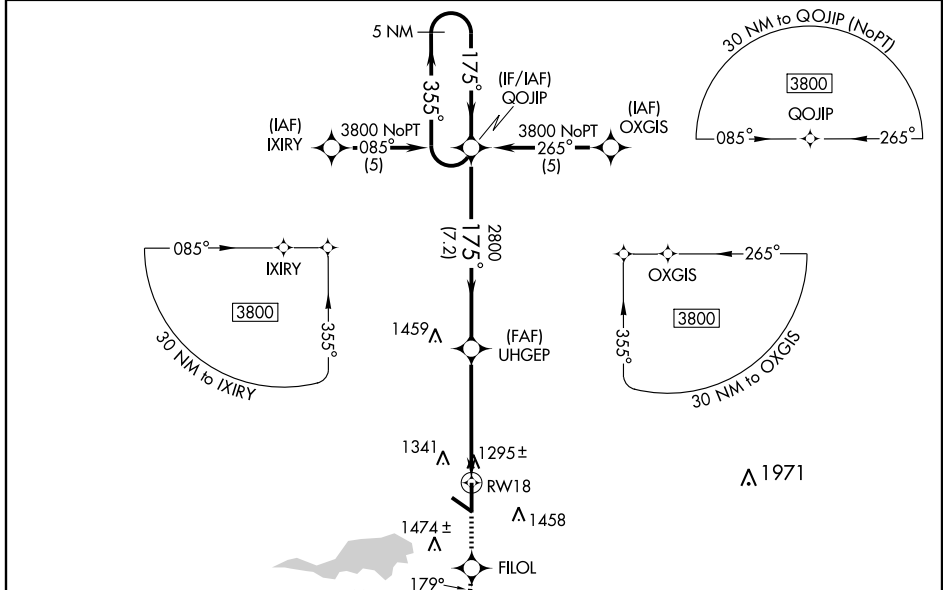
WAAS Chan <b>40100</b> <b>W18A</b>	APP CRS <b>175°</b>	Rwy Idg <b>6501</b> TDZE <b>1213</b> Apt Elev <b>1213</b>
--	------------------------	---

**⚠** Inoperative table does not apply to LNAV/VNAV.  
Baro-VNAV NA when using Charles City altimeter setting.  
If local altimeter setting not received, use Charles City altimeter setting and increase all DAs/MDAs 100 feet.  
Baro-VNAV NA below -17°C (2°F). DME/DME RNP -0.3 NA.  
VDP NA when using Charles City altimeter setting.

**MALS**  
**A4**

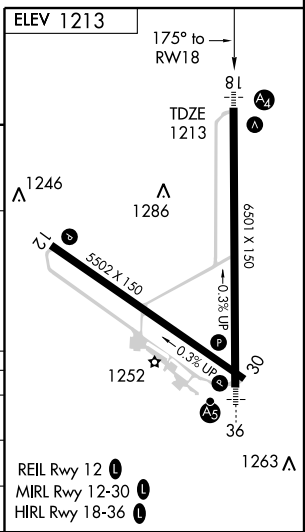
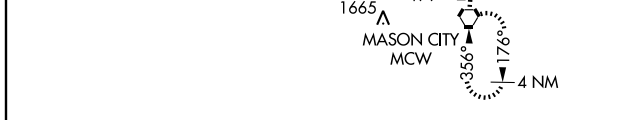
**MISSED APPROACH:** Climb to 3800 direct FILOL and via 179° track to MCW VORTAC and hold, continue climb-in-hold to 3800.

ASOS <b>120.3</b>	MINNEAPOLIS CENTER <b>127.3 380.2</b>	UNICOM <b>123.0 (CTAF)</b>
----------------------	--	-------------------------------



NC-3, 22 OCT 2009 to 19 NOV 2009

NC-3, 22 OCT 2009 to 19 NOV 2009



5 NM Holding Pattern	QOJIP	3800	FILOL	179° track	MCW
3800	UHGEP	*1 NM to RWY 18	*LNAV only		
GS 3.00° TCH 39					

CATEGORY	A	B	C	D
LNAV/ VNAV DA	1628-1½		415 (500-1½)	
LNAV MDA	1560-¾	347 (400-¾)	1560-1¼ 347 (400-1¼)	
CIRCLING	1660-1½ 447 (500-1½)	1680-1½ 467 (500-1½)	1760-1½ 547 (600-1½)	1840-2 627 (700-2)

REIL Rwy 12  
MIRL Rwy 12-30  
HIRL Rwy 18-36