

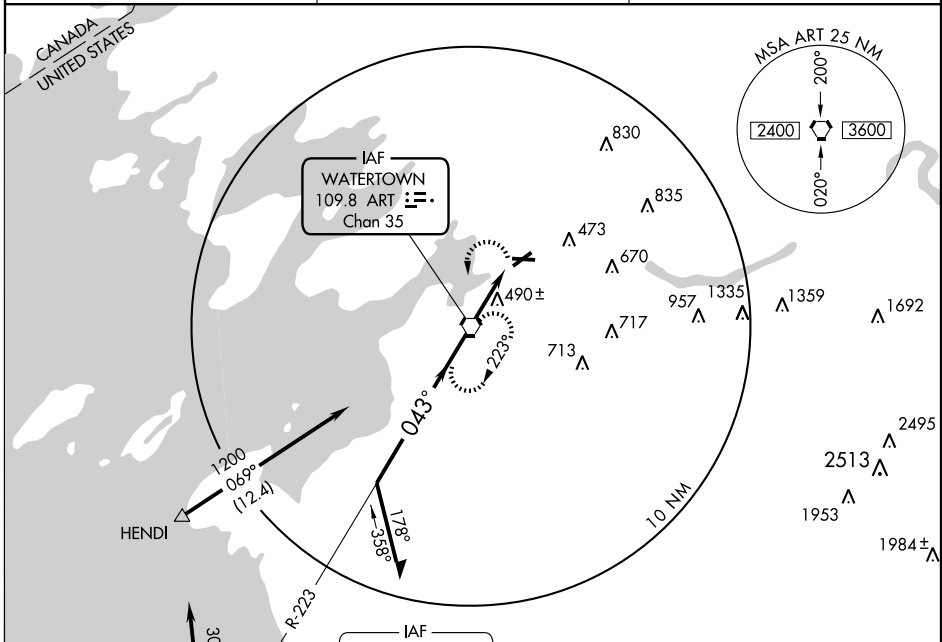
# VOR RWY 7

WATERTOWN INTL (ART)

VORTAC ART <b>109.8</b> Chan <b>35</b>	APP CRS <b>043°</b>	Rwy Idg TDZE Apt Elev	<b>5000</b> <b>319</b> <b>325</b>
--	------------------------	-----------------------------	---

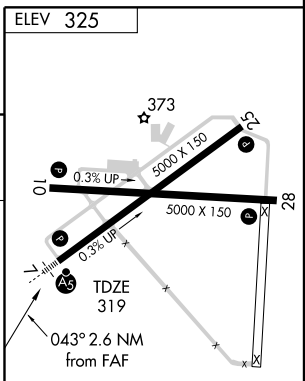
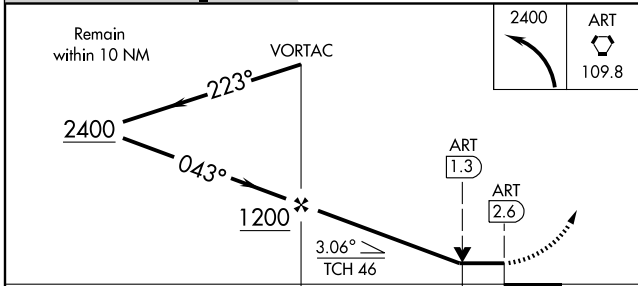
<p>Circling NA at night to Rwy 10. Inoperative table does not apply.</p>	<p>MALS R</p>	<p>MISSED APPROACH: Climbing left turn to 2400 direct ART VORTAC and hold.</p>
--	---------------	--

ASOS <b>132.325</b>	WHEELER-SACK APP CON <b>128.25 257.6</b>	UNICOM <b>123.0</b> (CTAF)
------------------------	---	-------------------------------



NE-2, 22 OCT 2009 to 19 NOV 2009

NE-2, 22 OCT 2009 to 19 NOV 2009



CATEGORY	A	B	C	D
S-7	840-1	521 (600-1)	840-1½ 521 (600-1½)	NA
CIRCLING	940-1 615 (700-1)	960-1 635 (700-1)	960-1¾ 635 (700-1¾)	NA

REIL Rwy 28

HIRL Rwy 7-25

MIRL Rwy 10-28

FAF to MAP 2.6 NM

Knots	60	90	120	150	180
Min:Sec	2:36	1:44	1:18	1:02	0:52