


# RNAV (GPS) RWY 7

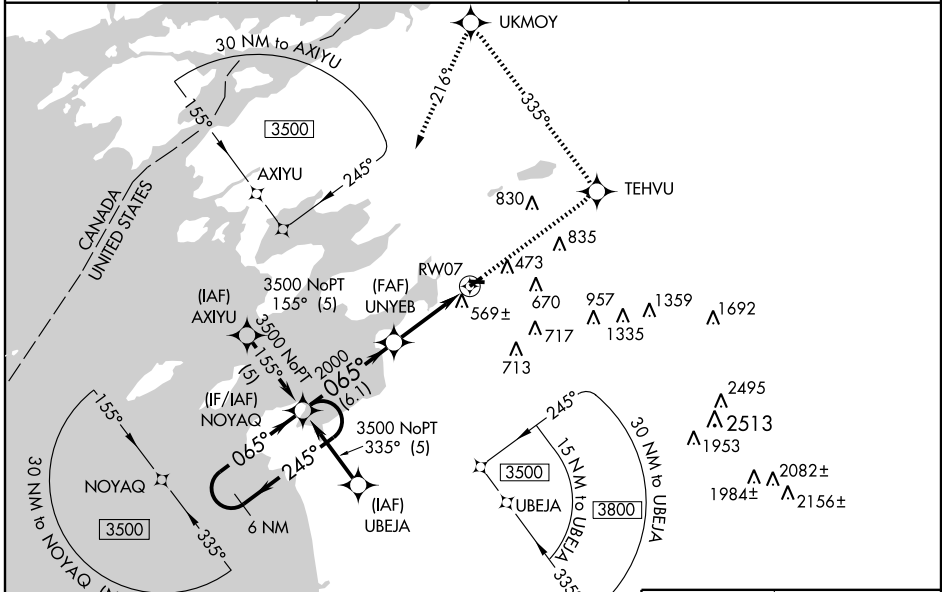
WATERTOWN INTL (ART)

WAAS CH <b>82510</b> <b>W07A</b>	APP CRS <b>065°</b>	Rwy Idg TDZE Apt Elev	<b>5000</b> <b>319</b> <b>325</b>
--	------------------------	-----------------------------	---

**⚠** Circling to Rwy 10 NA at night. When local altimeter setting not received, use Syracuse altimeter setting and increase LPV DA to 706 feet; LNAV/VNAV DA to 1039 feet; and all MDA 140 feet; increase LPV visibility ¼ mile all Cats; LNAV/VNAV visibility ½ mile all Cats; LNAV Cat C ¼ mile, and Cat D ½ mile; increase Circling Cat B visibility ¼ mile, Cat C and D visibility ½ mile. VDP NA when using Syracuse altimeter setting. Baro-VNAV NA when using Syracuse altimeter setting. For uncompensated Baro-VNAV systems, procedure NA below -15°C (5°F) or above 48°C (118°F). DME/DME RNP-0,3 NA. For inoperative MALSR, when using Syracuse altimeter setting, increase LPV visibility to 1¼ mile all Cats.

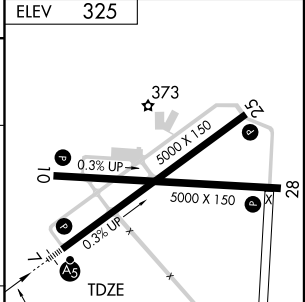
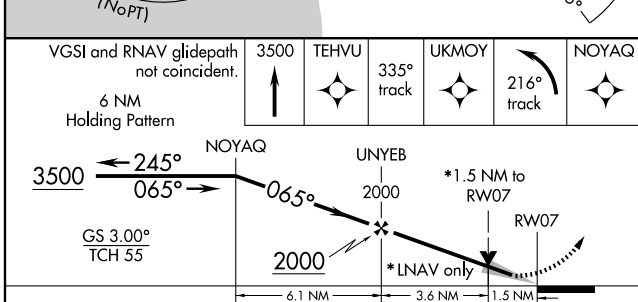
**MALSR**  
  
**MISSED APPROACH:**  
 Climb to 3500 direct TEHVU via 335° track to UKMOY and left turn via 216° track to NOYAQ and hold.

ASOS <b>132.325</b>	WHEELER-SACK APP CON <b>128.25 257.6</b>	UNICOM <b>123.0 (CTAF)</b>
------------------------	---	-------------------------------



NE-2, 22 OCT 2009 to 19 NOV 2009

NE-2, 22 OCT 2009 to 19 NOV 2009



CATEGORY	A	B	C	D
LPV DA		570-½	251 (300-½)	
LNAV/VNAV DA		903-1½	584 (600-1½)	
LNAV MDA	820-½ 501 (500-½)		820-1 501 (500-1)	
CIRCLING	960-1 635 (700-1)		960-1¼ 635 (700-1¼)	1000-2¼ 675 (700-2¼)

REIL Rwy 28 **Ⓛ**  
 HIRL Rwy 7-25 **Ⓛ**  
 MRL Rwy 10-28 **Ⓛ**