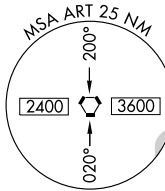
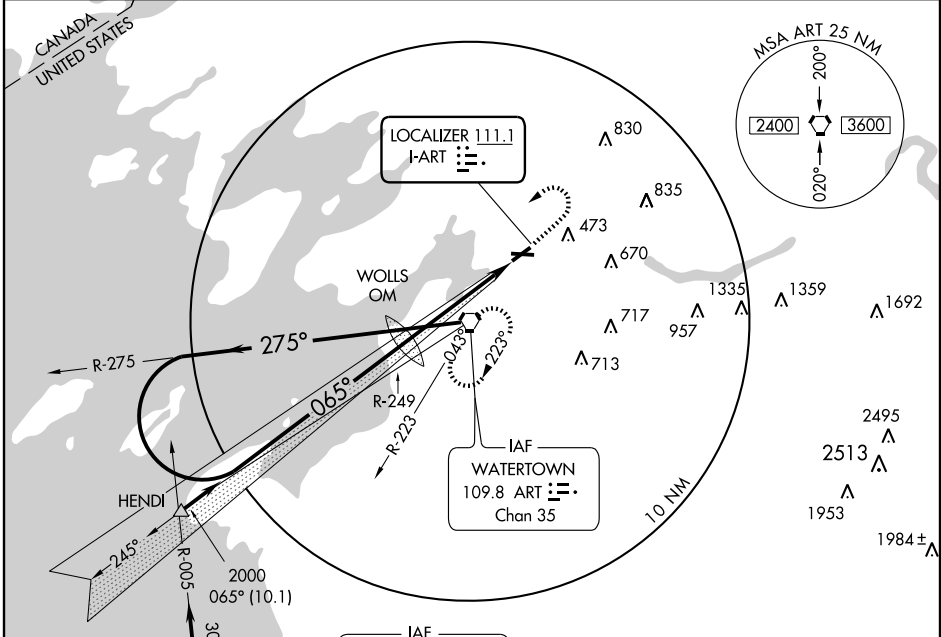


# ILS or LOC RWY 7 WATERTOWN INTL (ART)

LOC I-ART <b>111.1</b>	APP CRS <b>065°</b>	Rwy Idg TDZE Apt Elev	<b>5000</b> <b>319</b> <b>325</b>
---------------------------	------------------------	-----------------------------	---

<p>Circling NA at night to Rwy 10.</p>	<p>MALSR</p>	<p>MISSED APPROACH: Climb to 800, then climbing left turn to 2400 direct ART VORTAC and hold.</p>
--	--------------	---

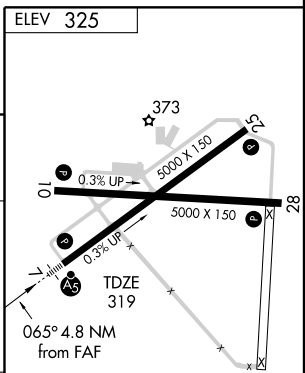
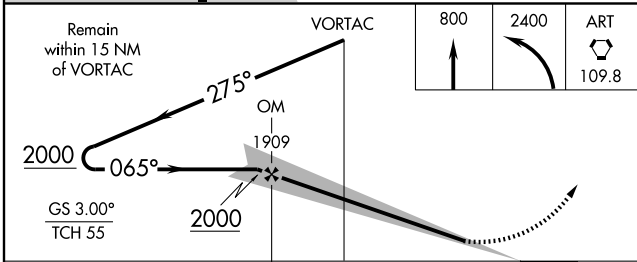
ASOS <b>132.325</b>	WHEELER-SACK APP CON <b>128.25 257.6</b>	UNICOM <b>123.0 (CTAF)</b>
------------------------	---	-------------------------------



NE-2, 22 OCT 2009 to 19 NOV 2009

NE-2, 22 OCT 2009 to 19 NOV 2009

ELEV 325
----------



CATEGORY	A	B	C	D
S-ILS 7		519-½	200 (200-½)	
S-LOC 7	760-½	411 (500-½)	760-¾ 411 (500-¾)	760-1 441 (500-1)
CIRCLING	940-1 615 (700-1)	960-1 635 (700-1)	960-1¾ 635 (700-1¾)	1000-2¼ 675 (700-2¼)

REIL Rwy 28	
HIRL Rwy 7-25	
MIRL Rwy 10-28	
FAF to MAP 4.8 NM	
Knots	60 90 120 150 180
Min:Sec	4:48 3:12 2:24 1:55 1:36