

VOR RWY 30

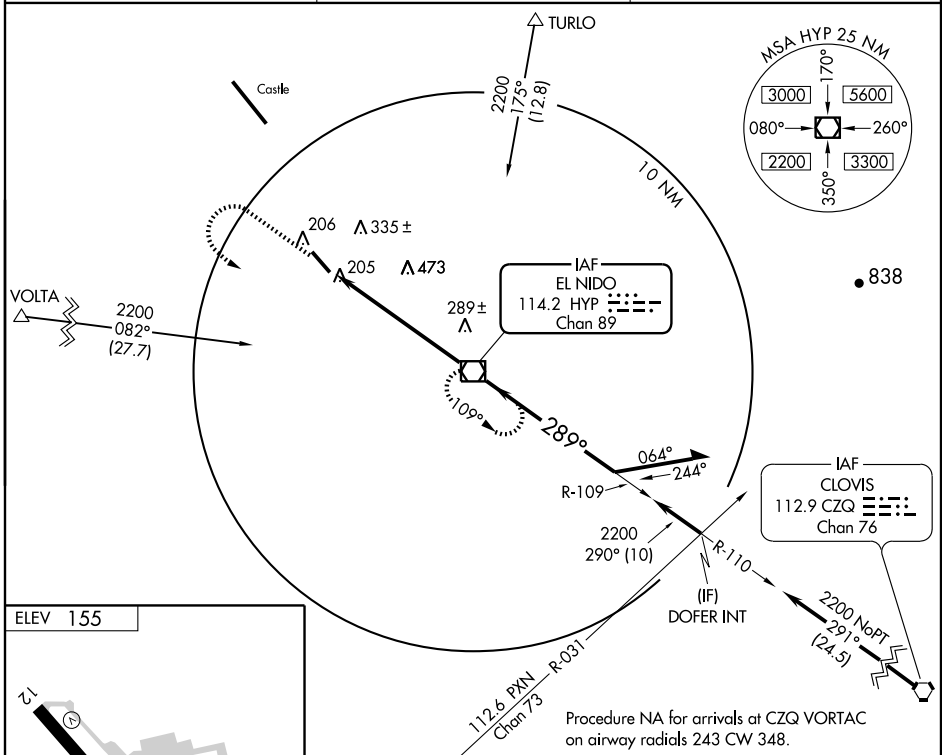
MERCED RGNL/MACREADY FIELD (MCE)

VOR/DME HYP 114.2 Chan 89	APP CRS 289°	Rwy Idg 5914 TDZE 155 Apt Elev 155
---	------------------------	---

⚠ For inoperative MALS, increase S-30 Cat A and B visibility to 1 mile, and Cat D to 1 1/4 mile. Circling NA NE of Rwy 12-30. Visibility reduction by helicopters NA. VDP NA when using Castle altimeter setting. When local altimeter setting not received, use Castle altimeter setting and increase all MDAs 20 feet.

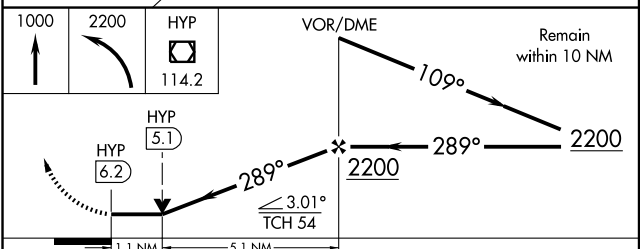
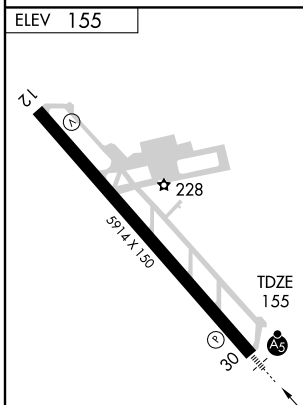
MALS MISSED APPROACH: Climb to 1000 then climbing left turn to 2200 direct HYP VOR/DME and hold.

ASOS 132.175	NORCAL APP CON 120.95 269.45	UNICOM 122.7 (CTAF)
------------------------	--	-------------------------------



SW-2, 22 OCT 2009 to 19 NOV 2009

SW-2, 22 OCT 2009 to 19 NOV 2009



ELEV 155	12	228	30	228
HIRL Rwy 12-30	REIL Rwy 12	289° 6.2 NM from FAF		
FAF to MAP 6.2 NM				
Knots	60	90	120	150
Min:Sec	6:12	4:08	3:06	2:29
CATEGORY	A	B	C	D
S-30	560-3/4	405 (500-3/4)	560-1	405 (500-1)
CIRCLING	560-1	620-1	620-1 1/2	720-2
	405 (500-1)	465 (500-1)	465 (500-1 1/2)	565 (600-2)