

WAAS CH <b>93709</b> <b>W30A</b>	APP CRS <b>304°</b>	Rwy Idg <b>5914</b> TDZE <b>155</b> Apt Elev <b>155</b>
--	------------------------	---

# RNAV (GPS) RWY 30

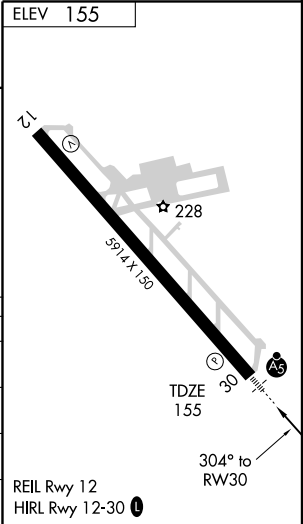
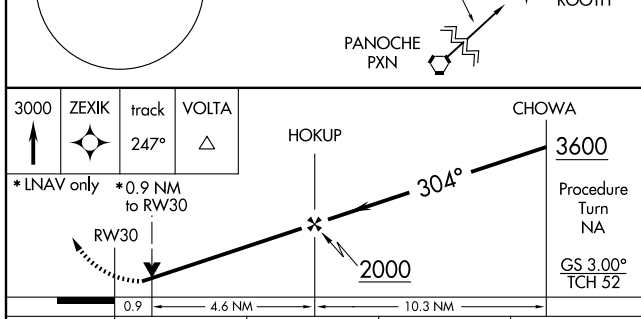
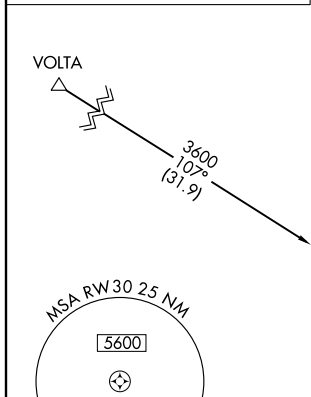
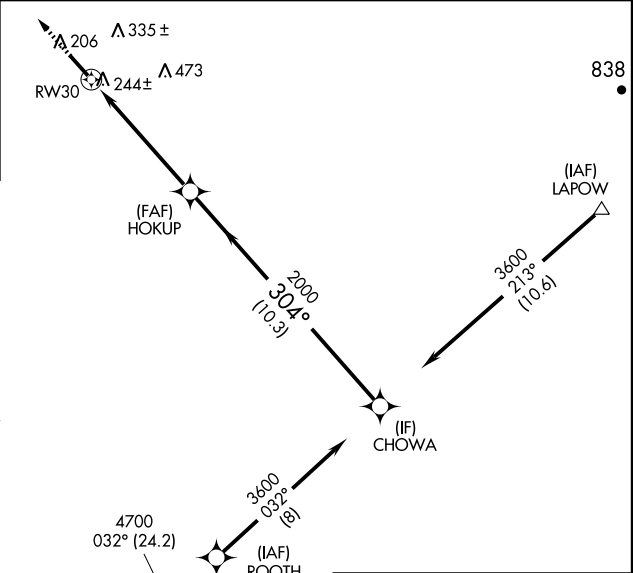
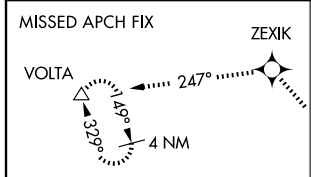
MERCED RGNL/MACREADY FIELD (MCE)

**⚠** Circling NA NE of Rwy 12-30. Baro-VNAV NA when using Merced/Castle altimeter setting. For uncompensated Baro-VNAV systems, LNAV/VNAV NA below -15°C (5°F) or above 48°C (118°F). DME/DME RNP-0.3 NA. Visibility reduction by helicopters NA. VDP NA when using Castle altimeter setting. For inoperative MALSR, increase LNAV visibilities Cat A, B, C to 1 mile and Cat D to 1½ mile. When local altimeter setting not received, use Castle altimeter setting and increase all DA/MDA 20 feet. Inoperative table does not apply.

**MALSR**

**MISSED APPROACH:**  
Climb to 3000 direct ZEXIK and via track 247° to VOLTA and hold.

ASOS <b>132.175</b>	NORCAL APP CON <b>120.95 269.4</b>	UNICOM <b>122.7 (CTAF)</b>
------------------------	---------------------------------------	-------------------------------



CATEGORY	A	B	C	D
LPV DA	449-¾ 294 (300-¾)			
LNAV/ VNAV DA	514-¾ 359 (400-¾)			
LNAV MDA	500-¾ 345 (400-¾)		500-1 345 (400-1)	
CIRCLING	560-1 405 (500-1)	620-1 465 (500-1)	620-1½ 465 (500-1½)	720-2 565 (600-2)

SW-2, 22 OCT 2009 to 19 NOV 2009

SW-2, 22 OCT 2009 to 19 NOV 2009