

LOC/DME I-MCE <b>109.3</b> Chan 30	APP CRS <b>303°</b>	Rwy Idg TDZE <b>155</b> Apt Elev <b>155</b>	<b>5914</b>
--	------------------------	---	-------------

# ILS or LOC RWY 30

MERCED RGNL/MACREADY FIELD (MCE)

**⚠** When local altimeter setting not received, use Castle altimeter setting and increase all DA/MDA 20 feet. Autopilot coupled approach NA below 585. For inoperative MALS increase S-LOC 30 Cat D visibility to 1. Circling NA NE of Rwy 12-30.

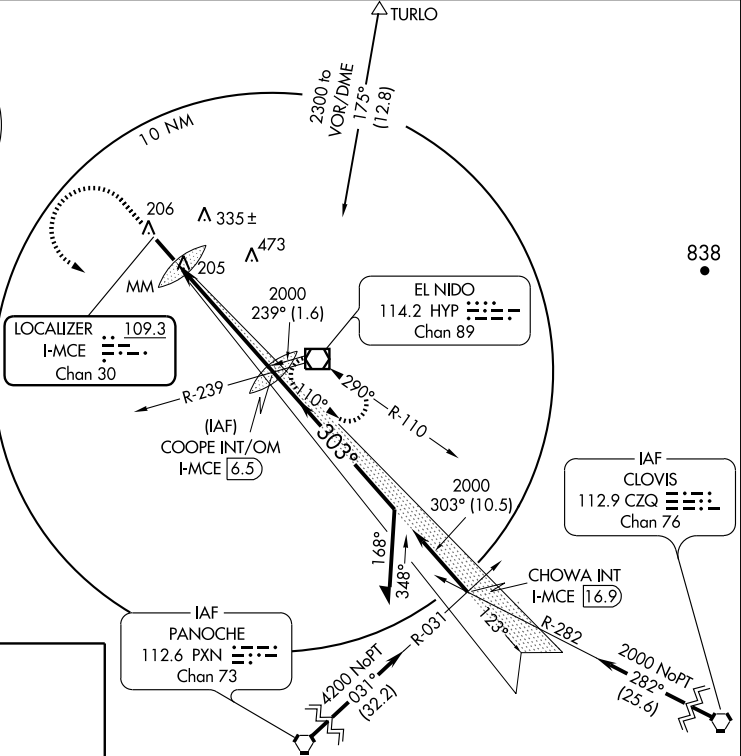
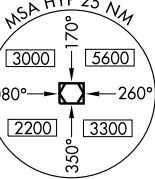


**MISSED APPROACH:** Climb to 1000 then climbing left turn to 2000 direct HYP VOR/DME and hold.

ASOS  
**132.175**

NORCAL APP CON  
**120.95 269.45**

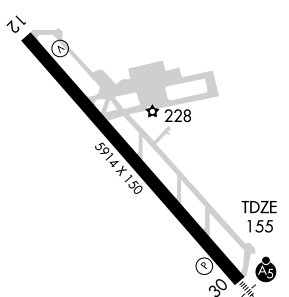
UNICOM  
**122.7 (CTAF) 0**



SW-2, 22 OCT 2009 to 19 NOV 2009

SW-2, 22 OCT 2009 to 19 NOV 2009

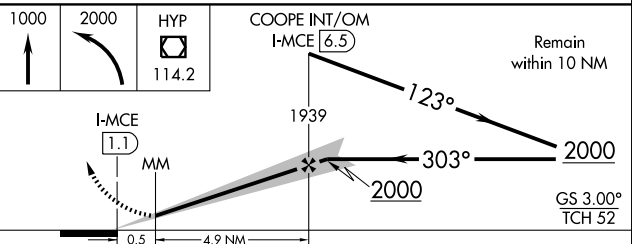
ELEV 155



HIRL Rwy 12-30  
REIL Rwy 12

FAF to MAP 5.4 NM

Knots	60	90	120	150	180
Min:Sec	5:24	3:36	2:42	2:10	1:48



CATEGORY	A	B	C	D
S-ILS 30	355-½ 200 (200-½)			
S-LOC 30	480-½ 325 (400-½)			
CIRCLING	560-1 405 (500-1)	620-1 465 (500-1)	620-1½ 465 (500-1½)	720-2 565 (600-2)