

GPS RWY 12

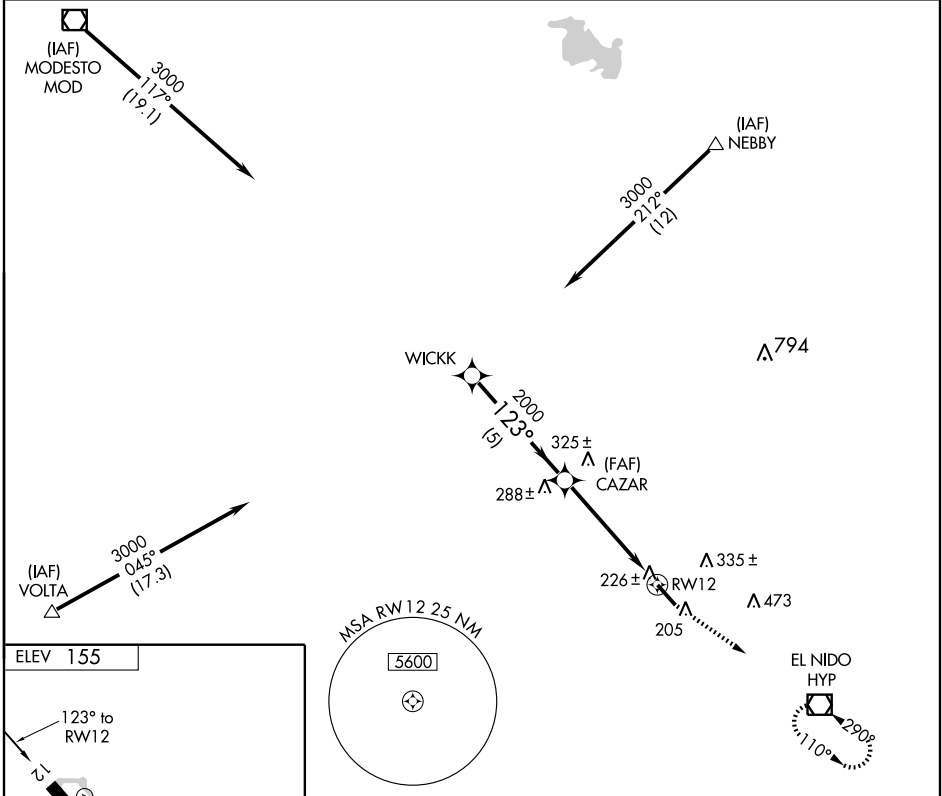
MERCED RGNL/MACREADY FIELD (MCE)

APP CRS 123°	Rwy Idg 5914
	TDZE 155
	Apt Elev 155

⚠ When local altimeter setting not received, use Castle altimeter setting and increase all MDAs 20 feet.
⚠ NA Circling NA NE of Rwy 12-30.

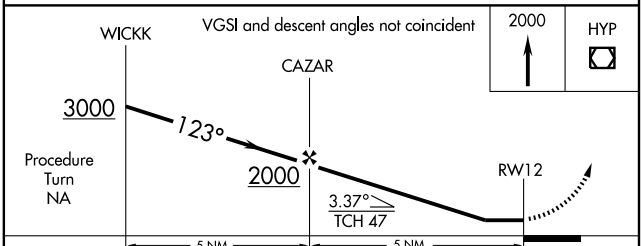
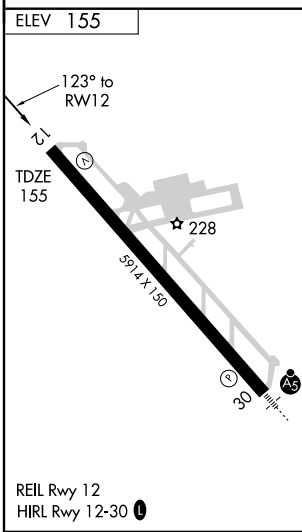
MISSED APPROACH: Climb to 2000 direct HYP VOR/DME and hold.

ASOS 132.175	NORCAL APP CON 120,95 269,4	UNICOM 122.7 (CTAF) 0
------------------------	---------------------------------------	---------------------------------



SW-2, 22 OCT 2009 to 19 NOV 2009

SW-2, 22 OCT 2009 to 19 NOV 2009



CATEGORY	A	B	C	D
S-12	520-1 365 (400-1)			520-1¼ 365 (400-1¼)
CIRCLING	560-1 405 (500-1)	620-1 465 (500-1)	620-1½ 465 (500-1½)	720-2 565 (600-2)