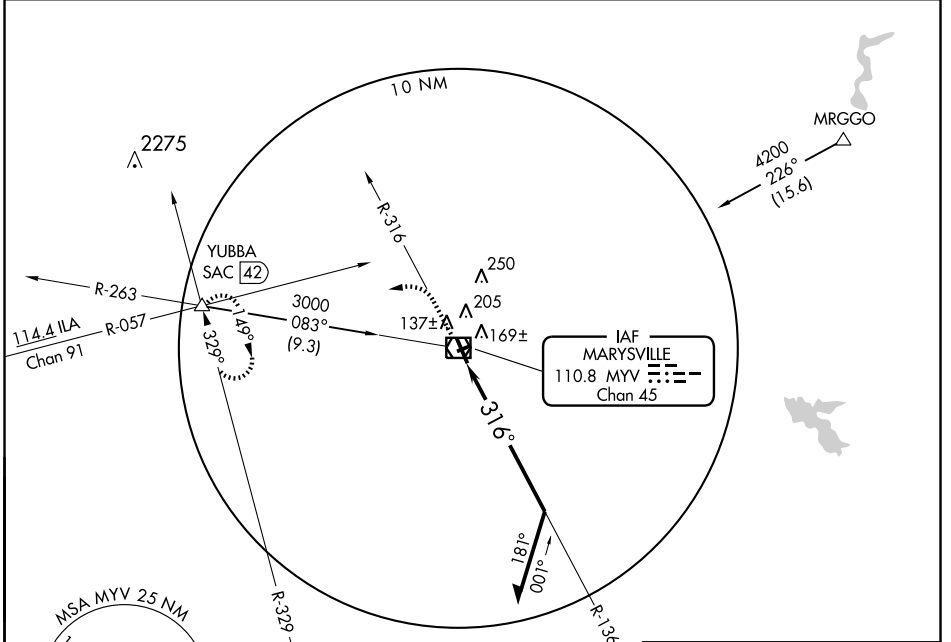


VOR/DME MYV <b>110.8</b> Chan 45	APP CRS <b>316°</b>	Rwy Idg <b>6006</b> TDZE <b>61</b> Apt Elev <b>62</b>
--	------------------------	---

**VOR RWY 32**  
MARYSVILLE/ YUBA COUNTY (MYV)

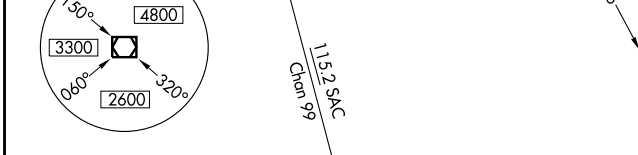
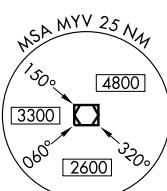
**MISSED APPROACH:** Climb to 2300 via MYV R-316, then climbing left turn to 4000 via heading 230° and SAC R-329 to YUBBA Int/SAC 42 DME and hold.

ASOS <b>118.475</b>	NORCAL APP CON <b>125.4 259.1</b>	UNICOM <b>123.05 (CTAF)</b>
------------------------	--------------------------------------	--------------------------------

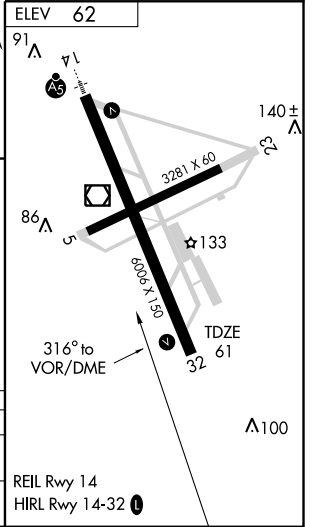


SW-2, 22 OCT 2009 to 19 NOV 2009

SW-2, 22 OCT 2009 to 19 NOV 2009



2300 ↑ MYV R-316	4000 ↙ 230° SAC R-329 115.2	YUBBA △ SAC 42 115.2 Chan 99	VOR/DME	Remain within 10 NM



CATEGORY	A	B	C	D
S-32	540-1	479 (500-1)	540-1½ 479 (500-1½)	540-1½ 479 (500-1½)
CIRCLING	540-1	478 (500-1)	540-1½ 478 (500-1½)	620-2 558 (600-2)