

MARYSVILLE, CALIFORNIA

AL-664 (FAA)

# RNAV (GPS) RWY 32

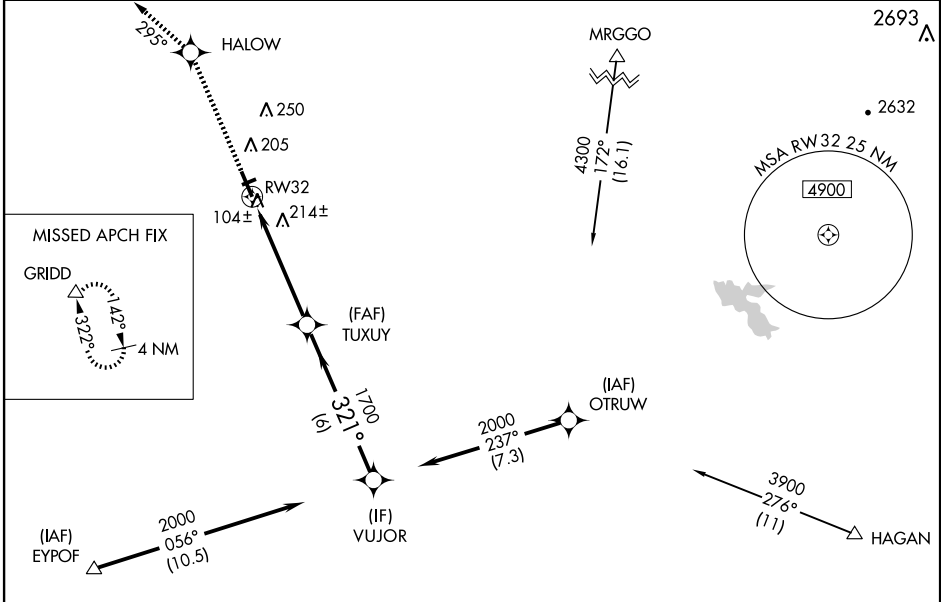
MARYSVILLE/YUBA COUNTY (MYV)

WAAS CH <b>87014</b> <b>W32A</b>	APP CRS <b>321°</b>	Rwy Idg <b>6006</b>
	TDZE <b>63</b>	
	Apf Elev <b>64</b>	

**⚠** For uncompensated Baro-VNAV systems, LNAV/VNAV NA below -15°C (5°F) or above 48°C (118°F). DME/DME RNP-0.3 NA. When local altimeter setting not received, use Lincoln altimeter setting and increase all DA 44 feet and all MDA 60 feet and increase LNAV Cat D visibility 1/4 mile. Baro-VNAV and VDP NA when using Lincoln altimeter setting.

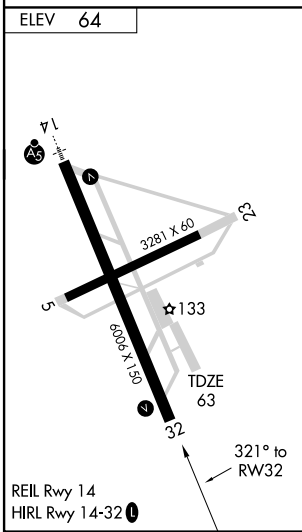
**⚠** MISSED APPROACH: Climb to 4000 direct HALOW and via track 295° to GRIDD and hold.

ASOS <b>118.475</b>	NORCAL APP CON <b>125.4 259.1</b>	UNICOM <b>123.05 (CTAF)</b>
------------------------	--------------------------------------	--------------------------------



SW-2, 22 OCT 2009 to 19 NOV 2009

SW-2, 22 OCT 2009 to 19 NOV 2009



4000	HALOW	trk 295°	GRIDD	*LNAV only	VUJOR	Procedure Turn NA
↑	✧		△		2000	
*1.2 NM to RW32		TUXUY		321°		1700
1.2		3.8 NM		6 NM		
CATEGORY	A	B	C	D		
LPV DA	313-1 250 (300-1)					
LNAV/VNAV DA	374-1¼ 311 (400-1¼)					
LNAV MDA	480-1 417 (500-1)		480-1¼ 417 (500-1¼)			
CIRCLING	540-1 476 (500-1)		540-1½ 476 (500-1½)		620-2 556 (600-2)	

MARYSVILLE, CALIFORNIA  
Orig 09239

39°06'N-121°34'W

# RNAV (GPS) RWY 32