

RNAV (GPS) RWY 14

MARYSVILLE/YUBA COUNTY (MYV)

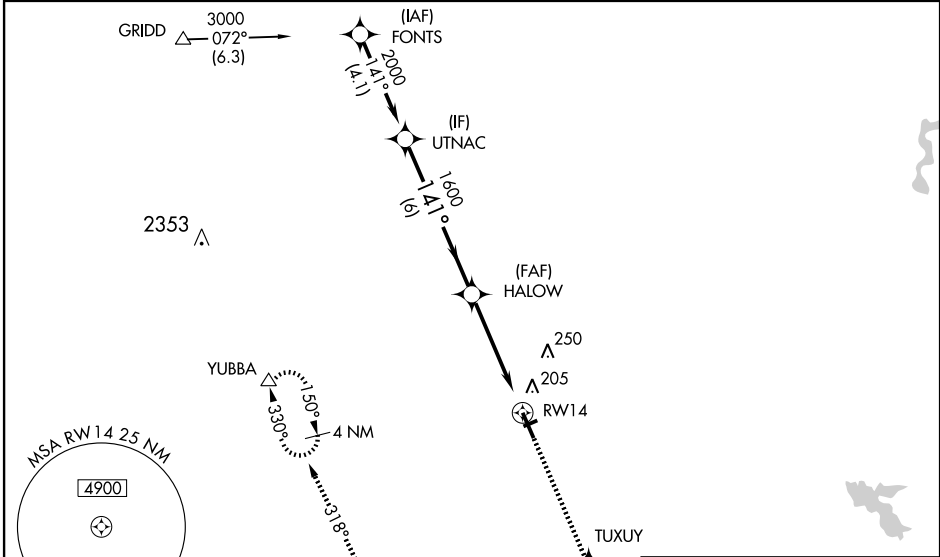
WAAS CH 42814 W14A	APP CRS 141°	Rwy Idg 6006 TDZE 64 Apf Elev 64
--	------------------------	---

⚠ For uncompensated Baro-VNAV systems, LNAV/VNAV NA below -1.5°C (5°F) or above 48°C (118°F). DME/DME RNP-0.3 NA. Visibility reduction by helicopters NA. Baro-VNAV and VDP NA when using Lincoln altimeter setting. When local altimeter setting not received, use Lincoln altimeter setting and increase all DA 44 feet and all MDA 60 feet. Inoperative table does not apply to LPV all Cats. For inoperative MALSRL increase LNAV all Cats visibility ¼ mile. For inoperative MALSRL when using Lincoln altimeter setting, increase LNAV Cats A and B visibility ¼ mile.



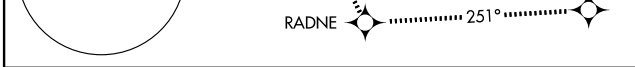
MISSED APPROACH: Climb to 4000 direct TUXUY and via track 251° to RADNE and via track 318° to YUBBA and hold.

ASOS 118.475	NORCAL APP CON 125.4 259.1	UNICOM 123.05 (CTAF) 0
------------------------	--------------------------------------	----------------------------------

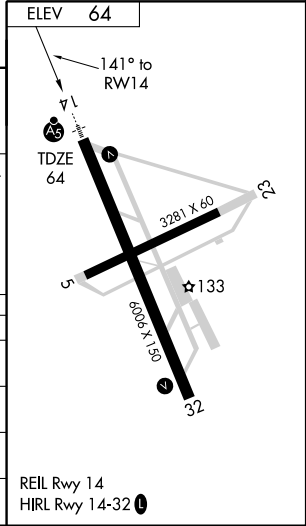


SW-2, 22 OCT 2009 to 19 NOV 2009

SW-2, 22 OCT 2009 to 19 NOV 2009



UTNAC	4000	TUXUY	trk 251°	RADNE	trk 318°	YUBBA
2000	↑	✧	✧	✧	△	△
Procedure Turn NA	141°		*1.1 NM to RWY14		*LNAV only.	
GS 3.00°	1600		RWY14			
TCH 51	6 NM		3.5 NM		1.1 NM	



CATEGORY	A	B	C	D
LPV DA	264-¾		200 (200-¾)	
LNAV/VNAV DA	470-1		406 (500-1)	
LNAV MDA	460-¾		396 (400-¾)	
			460-1	
			396 (400-1)	
CIRCLING	540-1 476 (500-1)		540-1½	
			476 (500-1½)	
			620-2	
			556 (600-2)	

REIL Rwy 14
HIRL Rwy 14-32 0