

ILS or LOC RWY 14

MARYSVILLE/YUBA COUNTY (MYV)

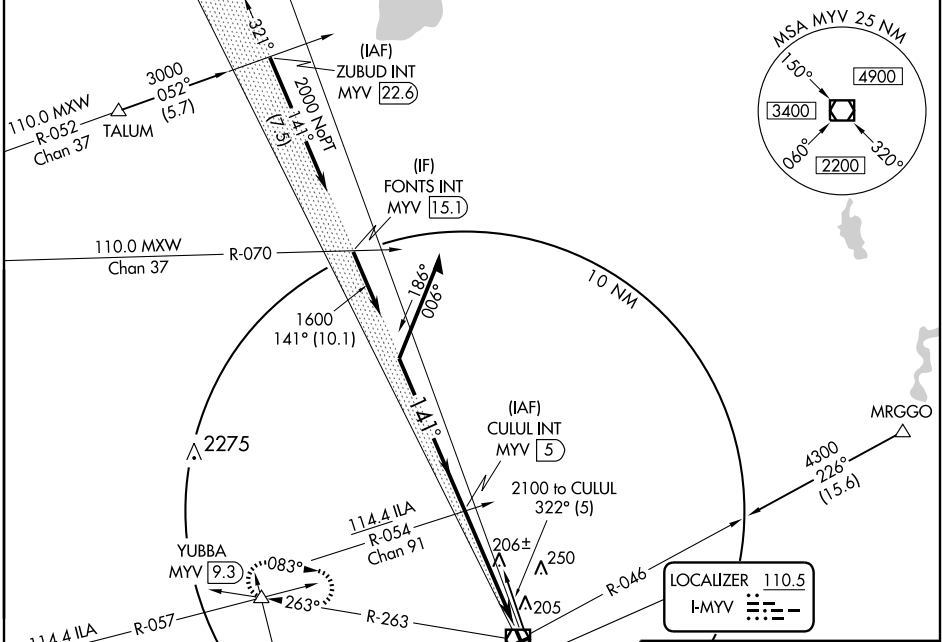
LOC I-MYV 110.5	APP CRS 141°	Rwy Idg 6006 TDZE 61 Apt Elev 62
---------------------------	------------------------	---

NA If local altimeter setting not received, use Oroville Muni altimeter setting and increase all DAs/MDAs 80 feet.
Autopilot coupled approach NA below 576.



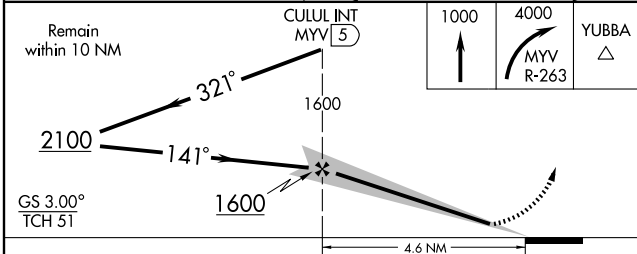
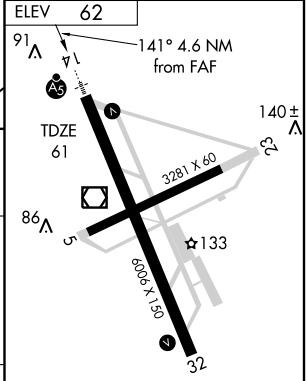
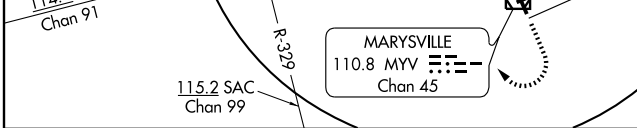
MISSED APPROACH: Climb to 1000, then climbing right turn to 4000 via MYV R-263 to YUBBA INT/MYV VOR/DME 9.3 DME and hold. Continue climb in hold to 4000.

ASOS 118.475	NORCAL APP CON 125.4 259.1	UNICOM 123.05 (CTAF) 0
------------------------	--------------------------------------	----------------------------------



SW-2, 22 OCT 2009 to 19 NOV 2009

SW-2, 22 OCT 2009 to 19 NOV 2009



CATEGORY	A	B	C	D
S-ILS 14		261-1/2	200 (200-1/2)	
S-LOC 14		460-1/2	399 (400-1/2)	460-3/4 399 (400-3/4)
CIRCLING	540-1	478 (500-1)	540-1 1/2 478 (500-1 1/2)	620-2 558 (600-2)

REIL Rwy 14				
HIRL Rwy 14-32				▲100
FAF to MAP 4.6 NM				
Knots	60	90	120	150
Min:Sec	4:36	3:04	2:18	1:50