

VOR RWY 24

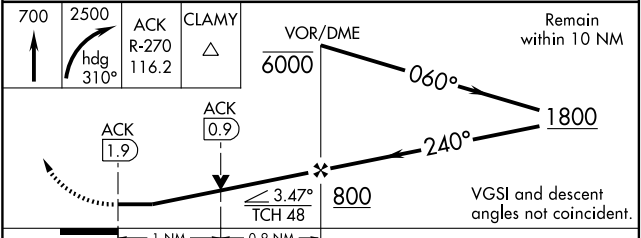
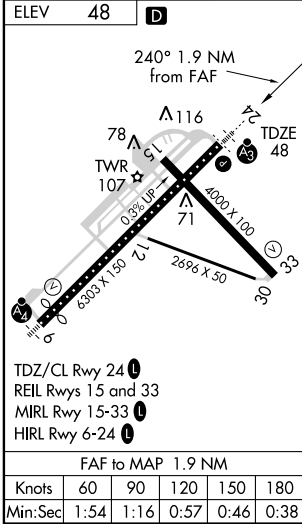
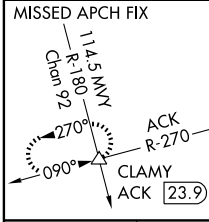
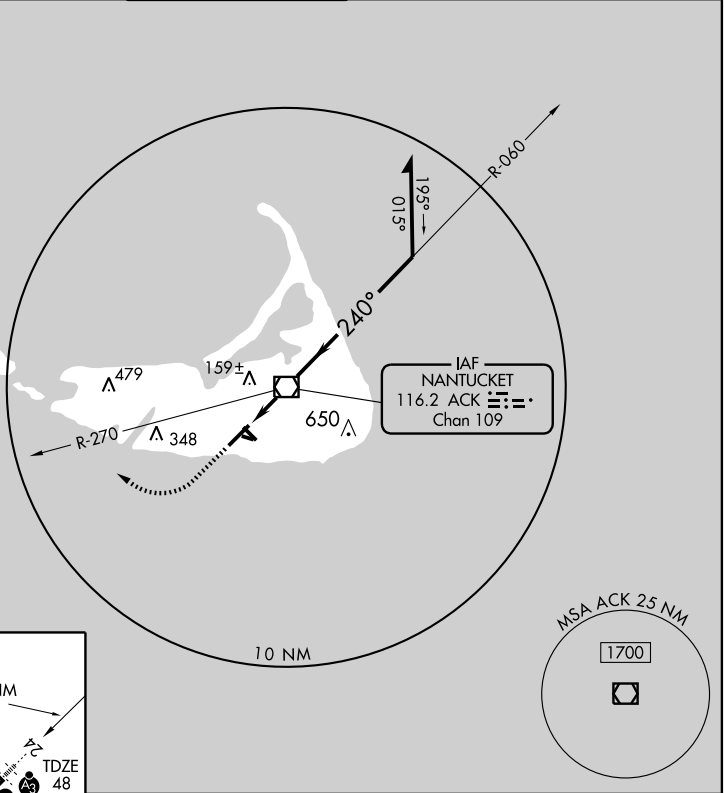
NANTUCKET MEMORIAL (ACK)

ACK VOR/DME 116.2 Chan 109	APP CRS 240°	Rwy Idg 6303 TDZE 48 Apt Elev 48
--	------------------------	---

⚠ When local altimeter setting not received, use Hyannis altimeter setting and increase all MDA 80 feet; increase S-24 Cat C visibility to RVR 4000. VDP NA when using Hyannis altimeter setting.
⚠ For Inoperative SSALR, increase S-24 Cat D visibility to RVR 6000.

SSALR MISSED APPROACH: Climb to 700 then climbing right turn to 2500 via heading 310° and ACK VOR/DME R-270 to CLAMY INT/ACK 23.9 DME and hold.

ATIS 127.5	CAPE APP CON ★ 126.1 318.1	NANTUCKET TOWER ★ 118.3 (CTAF) 0	GND CON 121.7	CLNC DEL 119.375	UNICOM 122.95
----------------------	--------------------------------------	--	-------------------------	----------------------------	-------------------------



CATEGORY	A	B	C	D
S-24	420/24 372 (400-½)			420/50 372 (400-1)
CIRCLING	440-1 392 (400-1)	500-1 452 (500-1)	500-1½ 452 (500-1½)	600-2 552 (600-2)

NE-1, 22 OCT 2009 to 19 NOV 2009

NE-1, 22 OCT 2009 to 19 NOV 2009