


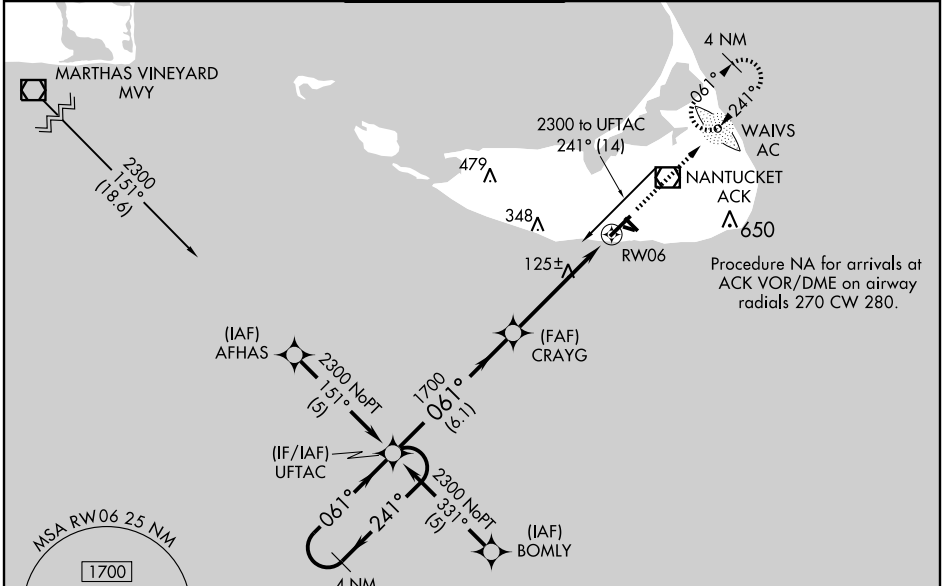
RNAV (GPS) RWY 6 NANTUCKET MEMORIAL (ACK)

WAAS CH 81912 W06A	APP CRS 061°	Rwy Idg TDZE Apt Elev	5752 39 48
--	------------------------	-----------------------------	---------------------------------------

⚠ For uncompensated Baro-VNAV systems, LNAV/VNAV NA below -15°C (5°F) or above 48°C (118°F). DME/DME RNP-0.3 NA. When local altimeter setting not received, use Hyannis altimeter setting and increase all DA 63 feet and all MDA 80 feet; increase LPV all Cats visibility to RVR 5000, LNAV/VNAV all Cats and LNAV Cats C and D visibility to RVR 6000. Baro-VNAV and VDP NA when using Hyannis altimeter setting. Inoperative table does not apply to LNAV/VNAV all Cats, and LNAV Cat C when using Hyannis altimeter setting.

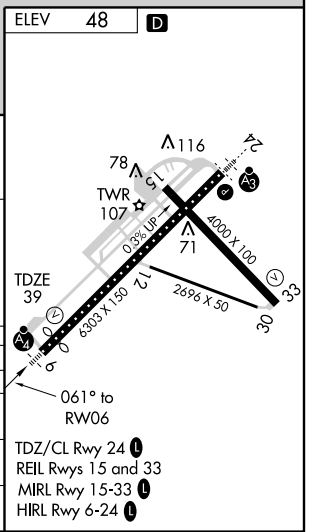
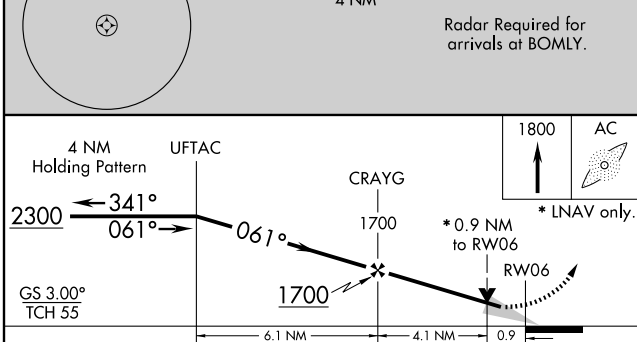
MALSIF

MISSED APPROACH:
Climb to 1800 direct
WAIVS LOM and
hold.

ATIS 127.5	CAPE APP CON * 126.1 318.1	NANTUCKET TOWER * 118.3 (CTAF) 0	GND CON 121.7	CLNC DEL 119.375	UNICOM 122.95
----------------------	--------------------------------------	--	-------------------------	----------------------------	-------------------------



NE-1, 22 OCT 2009 to 19 NOV 2009

NE-1, 22 OCT 2009 to 19 NOV 2009



CATEGORY	A	B	C	D
LPV DA	239/40			
LNAV/VNAV DA	352/40	313 (400-¾)	200 (200-¾)	
LNAV MDA	380/40	341 (400-¾)	352/50 313 (400-1)	
CIRCLING	440-1 392 (400-1)	500-1 452 (500-1)	500-1½ 452 (500-1½)	600-2 552 (600-2)