


RNAV (GPS) RWY 24

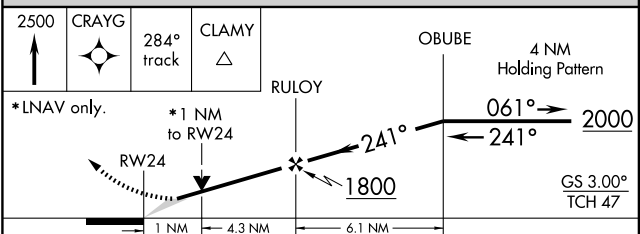
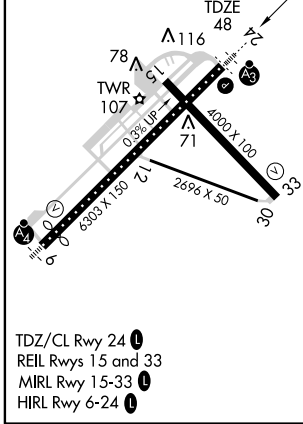
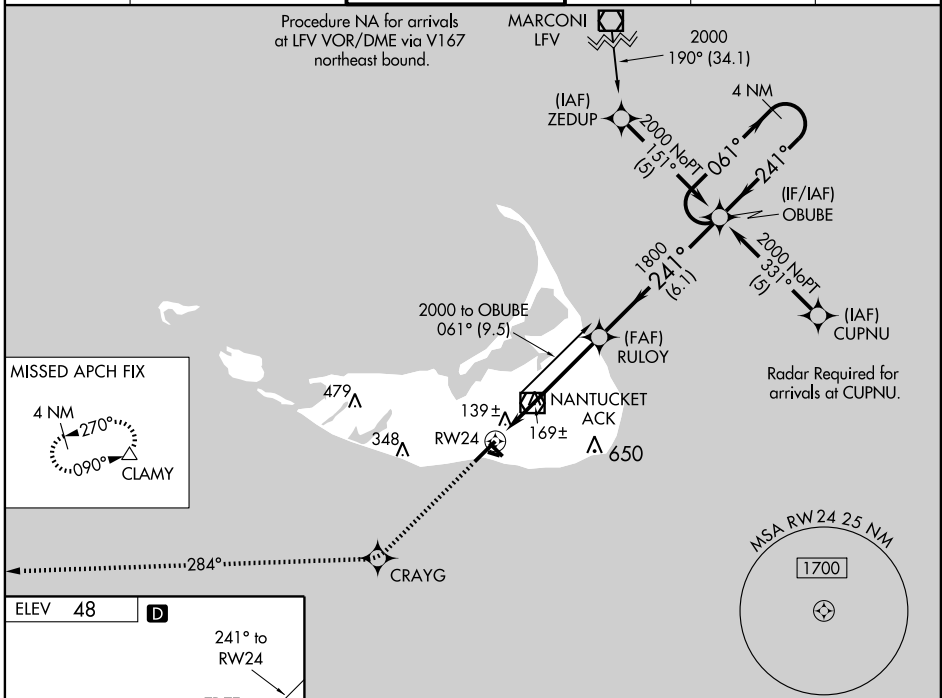
NANTUCKET MEMORIAL (ACK)

WAAS CH 93612 W24A	APP CRS 241°	Rwy Idg 6303 TDZE 48 Apt Elev 48
--	------------------------	---

⚠ For uncompensated Baro-VNAV systems, LNAV/VNAV NA below -15°C (5°F) or above 49°C (120°F). DME/DME RNP-0.3 NA. When local altimeter setting not received, use Hyannis altimeter setting and increase all DA 63 feet and all MDA 80 feet; increase LNAV/VNAV all Cats and LNAV Cat C visibility ¼ mile. Baro-VNAV and VDP NA when using Hyannis altimeter setting. For inoperative SSALR, increase LNAV Cat D visibility to RVR 6000. For inoperative SSALR when using Hyannis altimeter setting, increase LPV all Cats visibility to RVR 5000.

SSALR

MISSED APPROACH: Climb to 2500 direct CRAYG and via 284° track to CLAMY and hold.

ATIS 127.5	CAPE APP CON * 126.1 318.1	NANTUCKET TOWER * 118.3 (CTAF) 0	GND CON 121.7	CLNC DEL 119.375	UNICOM 122.95
----------------------	--------------------------------------	--	-------------------------	----------------------------	-------------------------



CATEGORY	A	B	C	D
LPV DA		248/24	200 (200-½)	
LNAV/VNAV DA		435/40	387 (400-¾)	
LNAV MDA		420/24	372 (400-½)	420/50 372 (400-1)
CIRCLING	440-1 392 (400-1)	500-1 452 (500-1)	500-1½ 452 (500-1½)	600-2 552 (600-2)

NE-1, 22 OCT 2009 to 19 NOV 2009

NE-1, 22 OCT 2009 to 19 NOV 2009

TDZ/CL Rwy 24 **Ⓛ**
 REIL Rwys 15 and 33 **Ⓛ**
 MRL Rwy 15-33 **Ⓛ**
 HIRL Rwy 6-24 **Ⓛ**