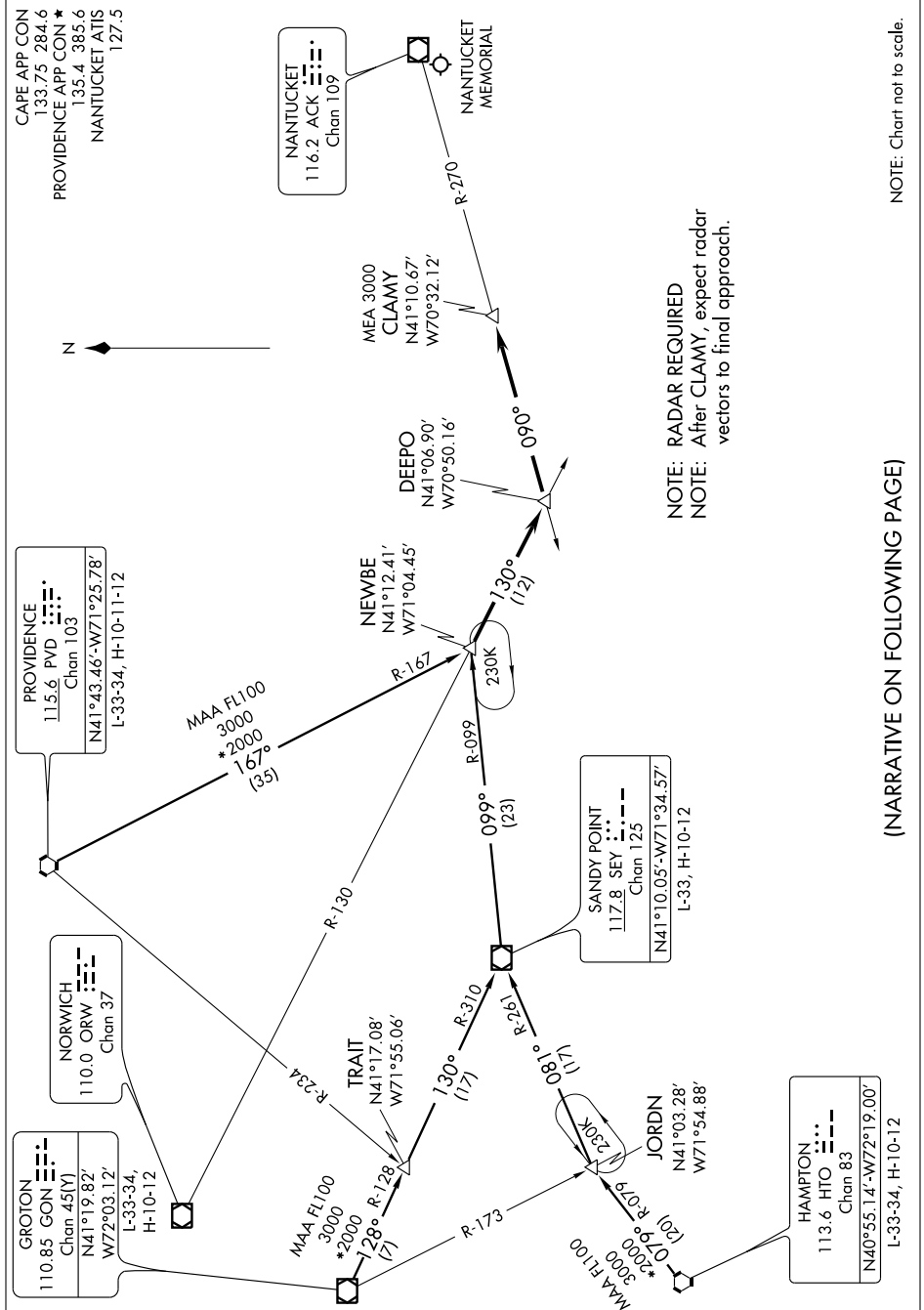


NEWBE ONE ARRIVAL

ST-659 (FAA)

NANTUCKET MEMORIAL
NANTUCKET, MASSACHUSETTS

NE-1, 22 OCT 2009 to 19 NOV 2009



NOTE: Chart not to scale.

(NARRATIVE ON FOLLOWING PAGE)

NE-1, 22 OCT 2009 to 19 NOV 2009

NEWBE ONE ARRIVAL

NANTUCKET, MASSACHUSETTS
NANTUCKET MEMORIAL