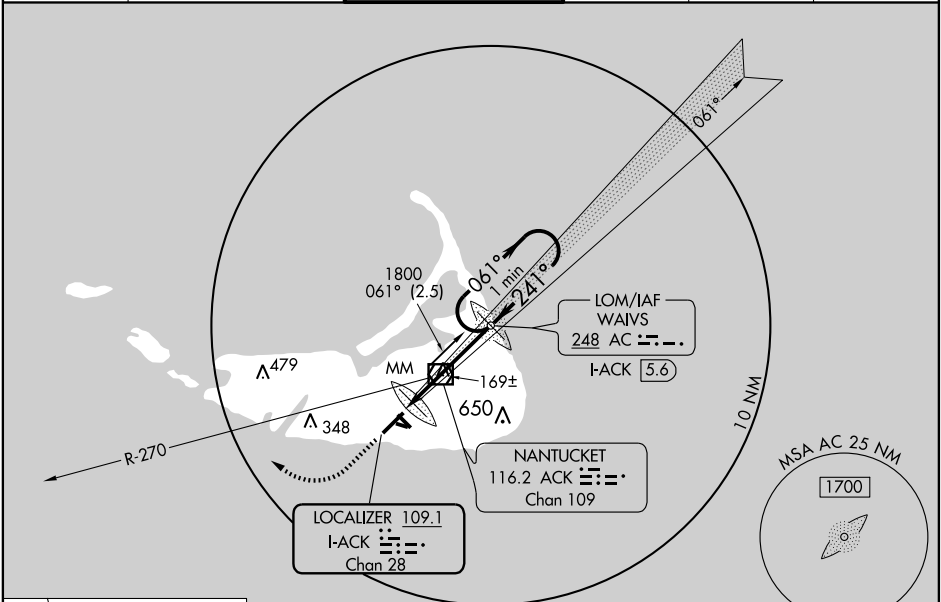


LOC/DME I-ACK <b>109.1</b> Chan 28	APP CRS <b>241°</b>	Rwy Idg <b>6303</b> TDZE <b>48</b> Apt Elev <b>48</b>
------------------------------------------	------------------------	-------------------------------------------------------------

# ILS or LOC RWY 24

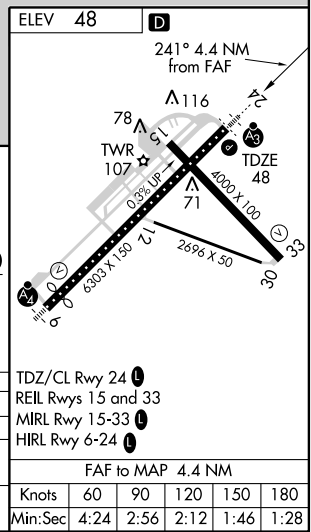
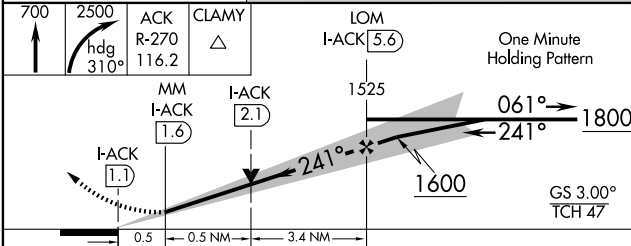
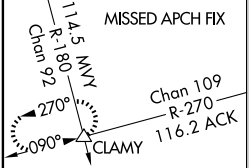
## NANTUCKET MEMORIAL (ACK)

<p><b>▼</b> When local altimeter setting not received, use Hyannis altimeter setting and increase all DA to 63 feet and all MDA 80 feet; increase S-LOC 24 Cat C visibility to RVR 4000 and Cat D visibility to RVR 5000. VDP NA when using Hyannis altimeter setting. For inoperative SSALR when using Hyannis altimeter setting, increase S-ILS 24 visibility to RVR 5000. ADF or DME Required.</p>		<p>SSALR</p>	<p>MISSED APPROACH: Climb to 700 then climbing right turn to 2500 via heading 310° and ACK VOR/DME R-270 to CLAMY Int and hold.</p>		
ATIS <b>127.5</b>	CAPE APP CON * <b>126.1 318.1</b>	NANTUCKET TOWER * <b>118.3 (CTAF) 0</b>	GND CON <b>121.7</b>	CLNC DEL <b>119.375</b>	UNICOM <b>122.95</b>



NE-1, 22 OCT 2009 to 19 NOV 2009

NE-1, 22 OCT 2009 to 19 NOV 2009



CATEGORY	A	B	C	D
S-ILS 24	248/18 200 (200-½)			
S-LOC 24	420/24 372 (400-½)		420/40 372 (400-¾)	
CIRCLING	440-1 392 (400-1)	500-1 452 (500-1)	500-1½ 452 (500-1½)	600-2 552 (600-2)

ELEV 48					
TDZ/CL Rwy 24 48					
REIL Rwy 15 and 33					
MIRL Rwy 15-33					
HIRL Rwy 6-24					
FAF to MAP 4.4 NM					
Knots	60	90	120	150	180
Min:Sec	4:24	2:56	2:12	1:46	1:28