

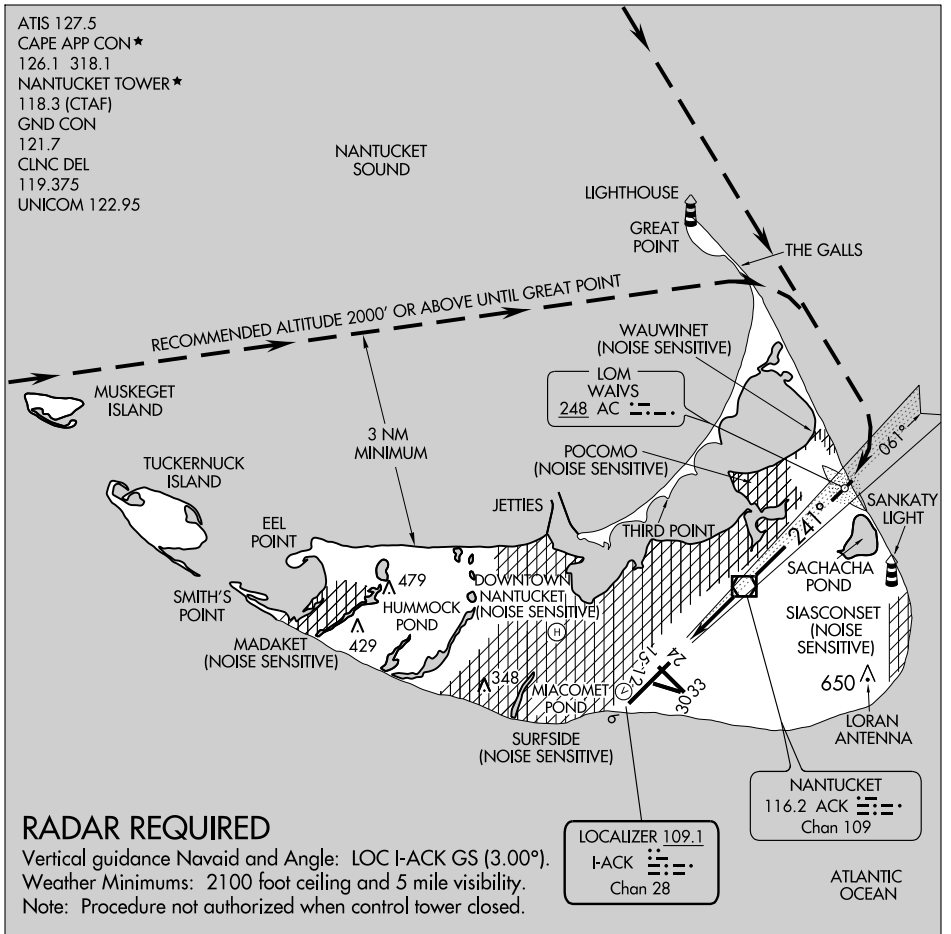
Orig 00167

# GREAT POINT VISUAL RWY 24

AL-659 (FAA)

NANTUCKET MEMORIAL (ACK)  
NANTUCKET, MASSACHUSETTS

ATIS 127.5  
 CAPE APP CON ★  
 126.1 318.1  
 NANTUCKET TOWER ★  
 118.3 (CTAF)  
 GND CON  
 121.7  
 CLNC DEL  
 119.375  
 UNICOM 122.95



NE-1, 22 OCT 2009 to 19 NOV 2009

NE-1, 22 OCT 2009 to 19 NOV 2009

## RADAR REQUIRED

Vertical guidance Navaid and Angle: LOC I-ACK GS (3.00°).  
 Weather Minimums: 2100 foot ceiling and 5 mile visibility.  
 Note: Procedure not authorized when control tower closed.

**LOCALIZER 109.1**  
 I-ACK  
 Chan 28

**NANTUCKET 116.2 ACK**  
 Chan 109

1 NM	2	3	4	5	6	7	8	9	10	11	12	13	14	15
------	---	---	---	---	---	---	---	---	----	----	----	----	----	----

# GREAT POINT VISUAL RWY 24

41°15'N - 70°04'W

NANTUCKET, MASSACHUSETTS  
NANTUCKET MEMORIAL (ACK)

Orig 00167