

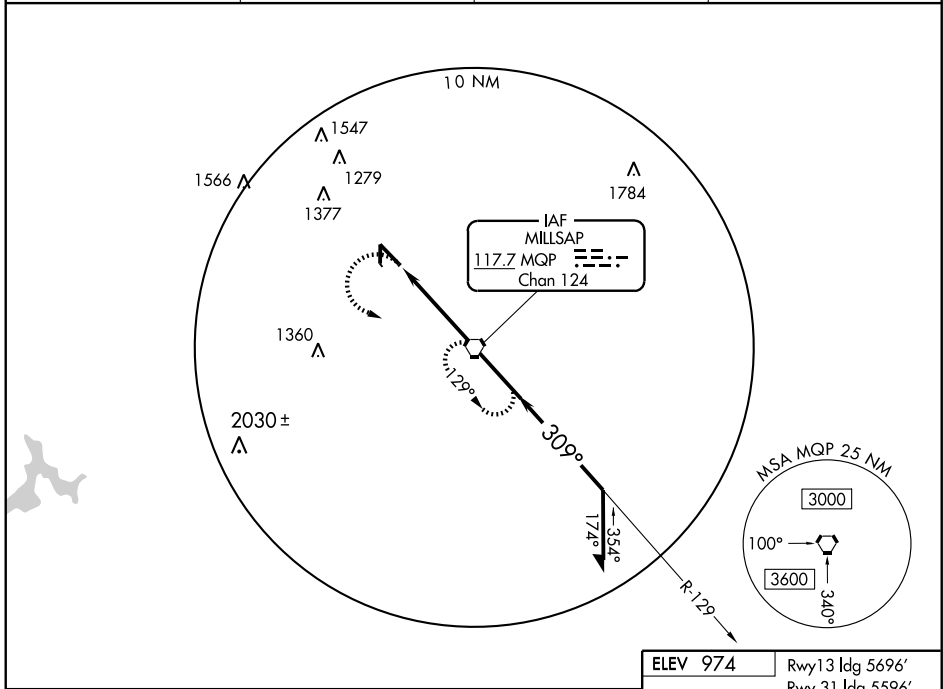
VOR RWY 31

MINERAL WELLS (MWL)

VORTAC MQP 117.7 Chan 124	APP CRS 309°	Rwy ldg 5596 TDZE 974 Apt Elev 974
---	------------------------	---

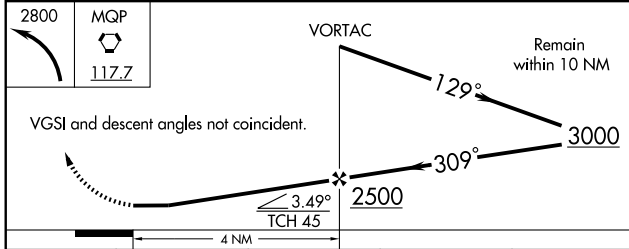
Obtain local altimeter setting on CTAF; when not received, use Fort Worth Meacham altimeter setting.
 NA
MISSED APPROACH: Climbing left turn to 2800 direct MQP VORTAC and hold.

ASOS 135.075	FORT WORTH CENTER 127.0 360.6	GCO 121.725	UNICOM 122.725 (CTAF)
------------------------	---	-----------------------	---------------------------------



SC-2, 22 OCT 2009 to 19 NOV 2009

SC-2, 22 OCT 2009 to 19 NOV 2009



CATEGORY	A	B	C	D
S-31	1340-1 366 (400-1)			1340-1¼ 366 (400-1¼)
CIRCLING	1420-1 446 (500-1)	1440-1 466 (500-1)	1440-1½ 466 (500-1½)	1540-2 566 (600-2)
FORT WORTH MEACHAM INTL ALTIMETER SETTING MINIMUMS				
S-31	1460-1 486 (500-1)		1460-1¼ 486 (500-1¼)	1460-1½ 486 (500-1½)
CIRCLING	1540-1 566 (600-1)		1540-1½ 566 (600-1½)	1580-2 606 (700-2)

