

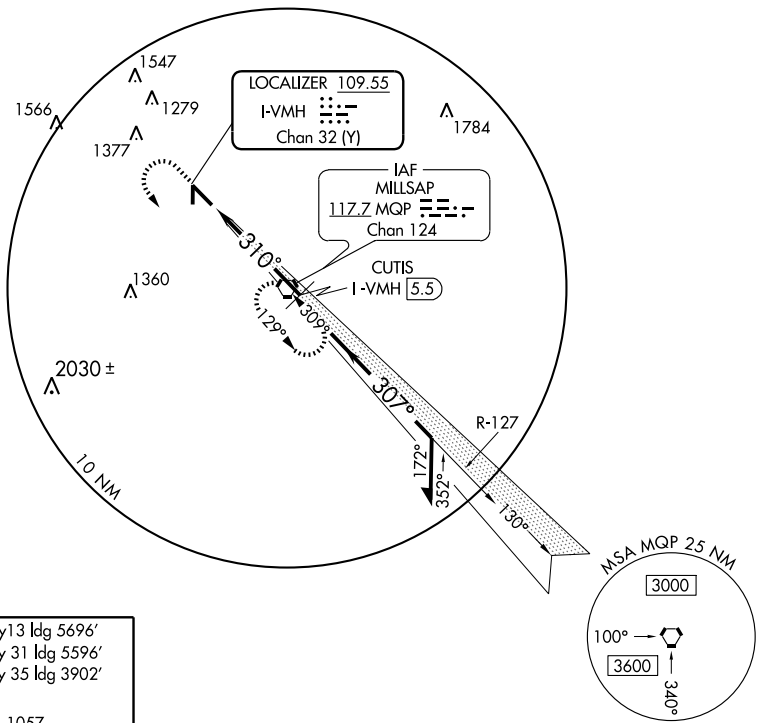
ILS or LOC/DME RWY 31

MINERAL WELLS (MWL)

LOC/DME I-VMH 109.55 Chan 32 (Y)	APP CRS 310°	Rwy ldg 5596 TDZE 974 Apt Elev 974
--	------------------------	---

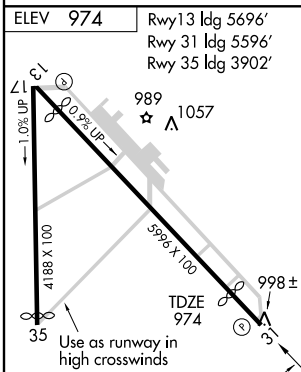
MISSED APPROACH: Climb to 1500 then climbing left turn to 3000 direct MQP VORTAC and hold.

ASOS 135.075	FORT WORTH CENTER 127.0 360.6	GCO 121.725	UNICOM 122.725 (CTAF) 0
------------------------	---	-----------------------	-----------------------------------

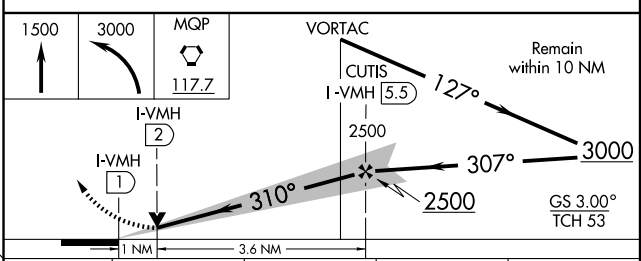


SC-2, 22 OCT 2009 to 19 NOV 2009

SC-2, 22 OCT 2009 to 19 NOV 2009



ELEV 974	Rwy 13 ldg 5696'
	Rwy 31 ldg 5596'
	Rwy 35 ldg 3902'
	989
	1057
	998±
	35
	4188 X 100
	59% X 100
	TDZE 974
	310° 4.6 NM from FAF
MIRL Rwy 17-35	
MIRL Rwy 13-31	
Knots	60 90 120 150 180
Min:Sec	



CATEGORY	A	B	C	D
S-ILS 31	1174-¾ 200 (200-¾)			
S-LOC 31	1340-1 366 (400-1)			1340-1¼ 366 (400-1¼)
CIRCLING	1420-1 446 (500-1)	1440-1 466 (500-1)	1440-1½ 466 (500-1½)	1540-2 566 (600-2)