

GOODING, IDAHO

AL-657 (FAA)

WAAS CH <b>45909</b> <b>W25A</b>	APP CRS <b>248°</b>	Rwy Idg <b>4745</b> TDZE <b>3732</b> Apt Elev <b>3732</b>
--	------------------------	---

# RNAV (GPS) RWY 25

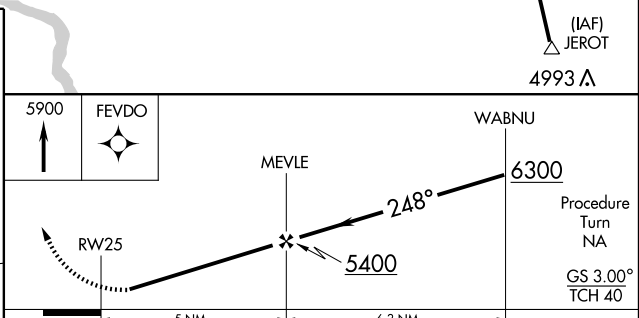
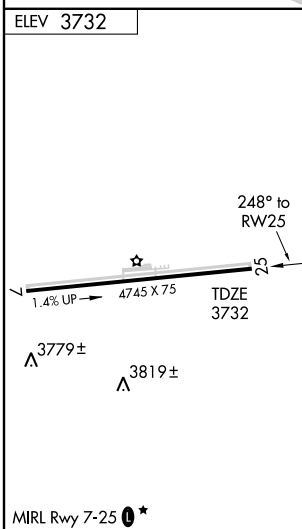
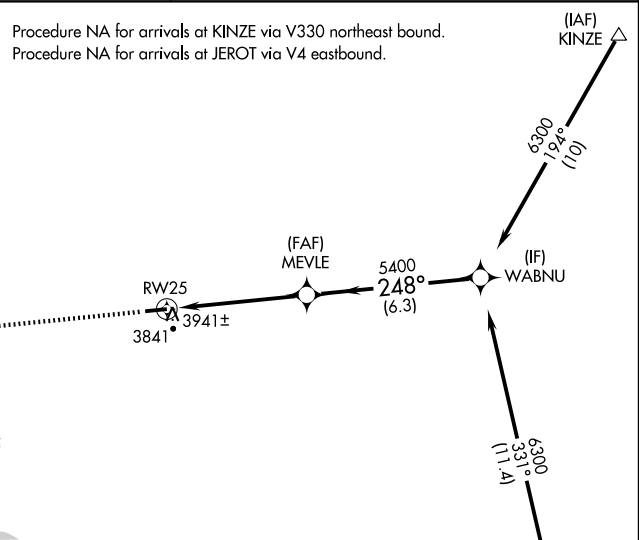
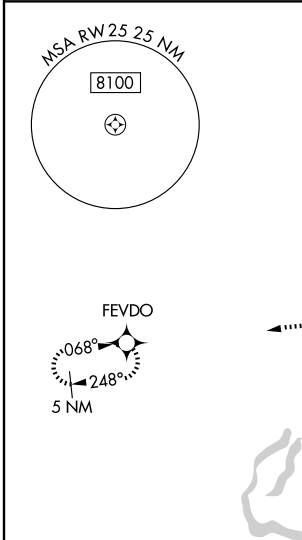
GOODING MUNI (GNG)

**⚠** DME/DME RNP-0.3 NA. Visibility reduction by helicopters NA.  
**⚠** Baro-VNAV NA when using Jerome County altimeter setting.  
 For uncompensated Baro-VNAV systems, LNAV/VNAV NA below -22°C (-7°F) or above 41°C (105°F).  
 Obtain local altimeter setting on CTAF; when not received, use Jerome County altimeter setting and increase all DA 86 feet and all MDA 100 feet. Increase LPV visibility ¼ mile all Cats, LNAV/VNAV visibility ¼ mile all Cats, LNAV visibility Cat C and D ¼ mile, and circling visibility Cat C ¼ mile.

MISSED APPROACH: Climb to 5900  
 direct FEVDO and hold.

SALT LAKE CENTER  
**118.05 363.0**

UNICOM  
**122.8 (CTAF) 0\***



CATEGORY	A	B	C	D
LPV DA	4006-1 274 (300-1)			
LNAV/VNAV DA	4211-1¾ 479 (500-1¾)			
LNAV MDA	4200-1	468 (500-1)	4200-1¼ 468 (500-1¼)	4200-1½ 468 (500-1½)
CIRCLING	4260-1	528 (600-1)	4260-1½ 528 (600-1½)	4300-2 568 (600-2)

GOODING, IDAHO  
 Orig 08269

42°55'N-114°46'W

# GOODING MUNI (GNG) RNAV (GPS) RWY 25

NW-1, 22 OCT 2009 to 19 NOV 2009

NW-1, 22 OCT 2009 to 19 NOV 2009