

# RNAV (GPS) RWY 29

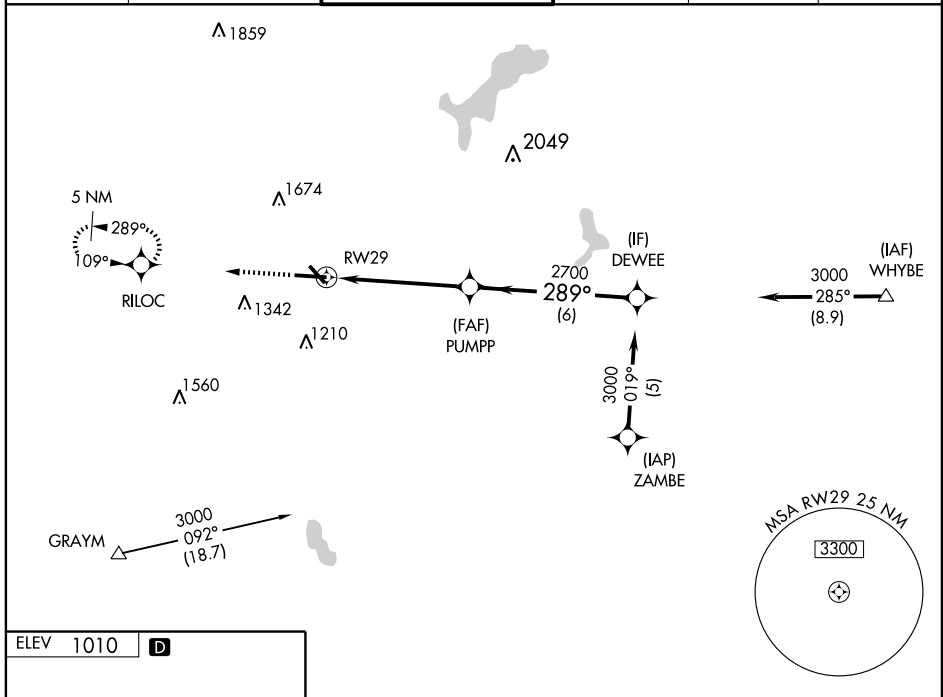
WORCESTER RGNL (ORH)

WAAS Ch <b>82299</b> <b>W29A</b>	APP CRS <b>289°</b>	Rwy Idg <b>7000</b> TDZE <b>991</b> Apt Elev <b>1010</b>
--	------------------------	--

**▼** DME/DME RNP -0.3 NA. Baro VNAV NA below -17°C (2°F).  
**▲** If local altimeter setting not received, use Laurence G. Hanscom Fld altimeter setting and increase all DAs/MDAs 200'. VDP and Baro-VNAV  
**W** NA when using Laurence G. Hanscom Fld altimeter setting.

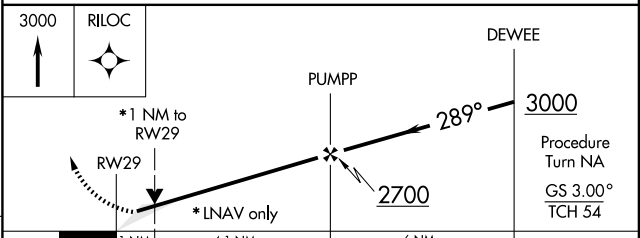
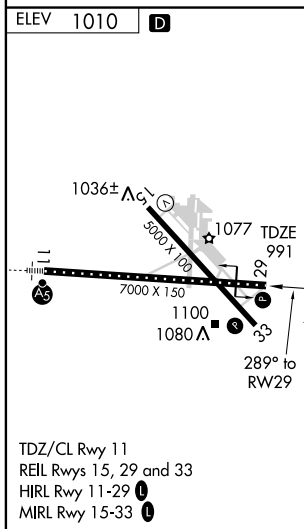
MISSED APPROACH: Climb to 3000 direct RILOC and hold, continue climb-in-hold to 3000.

ATIS <b>126.55</b>	BRADLEY APP CON <b>119.0 327.1</b>	<b>WORCESTER TOWER ★</b> <b>120.5 (CTAF) 263.0</b>	GND CON <b>123.85</b>	CLNC DEL <b>128.65</b>	UNICOM <b>122.95</b>
-----------------------	---------------------------------------	---	--------------------------	---------------------------	-------------------------



NE-1, 22 OCT 2009 to 19 NOV 2009

NE-1, 22 OCT 2009 to 19 NOV 2009



CATEGORY	A	B	C	D
LPV DA		1241/40	250 (300-¾)	
LNNAV/ VNAV DA		1361/60	370 (400-1¼)	
LNNAV MDA		1360/50	369 (400-1)	1360/60 369 (400-1¼)
CIRCLING	1540 - 1¼ 530 (600-1¼)	1640 - 1¼ 630 (700-1¼)	1720 - 2 710 (700-2)	2000 - 3 990 (1000-3)