

RNAV (GPS) RWY 11

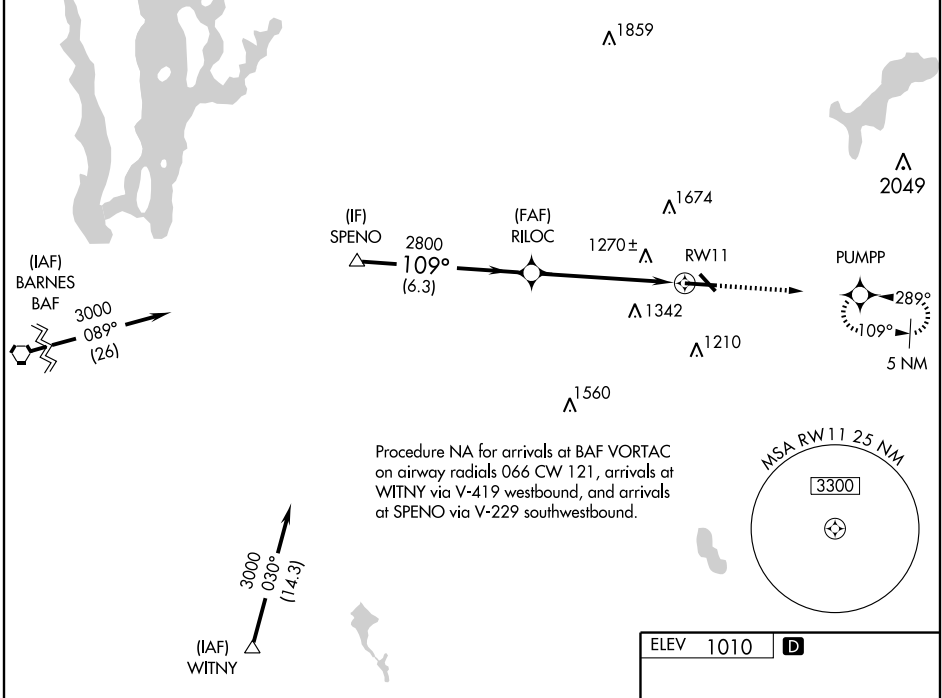
WORCESTER RGNL (ORH)

WAAS Ch 77999 W11A	APP CRS 109°	Rwy Idg 7000 TDZE 981 Apt Elev 1010
--	------------------------	--

⚠ DME/DME RNP -0.3 NA. For inoperative MALSR, increase LPV visibility all Cats to RVR 6000. If local altimeter setting not received, use Laurence G. Hanscom Fld altimeter setting and increase all DAs/MDAs 200'.
⚠ VDP NA when using Laurence G. Hanscom Fld altimeter setting.

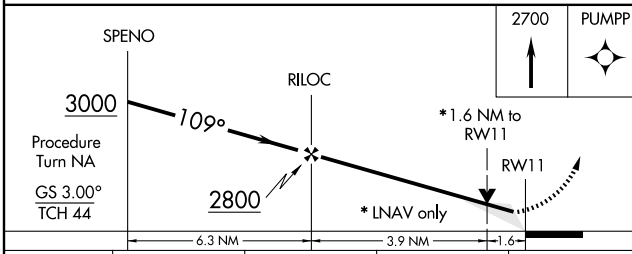
MALSR MISSED APPROACH: Climb to 2700 direct PUMPP and hold. When authorized by ATC, continue climb-in-hold to 3000.

ATIS 126.55	BRADLEY APP CON 119.0 327.1	WORCESTER TOWER ★ 120.5 (CTAF) 0 263.0	GND CON 123.85	CLNC DEL 128.65	UNICOM 122.95
-----------------------	---------------------------------------	--	--------------------------	---------------------------	-------------------------



NE-1, 22 OCT 2009 to 19 NOV 2009

NE-1, 22 OCT 2009 to 19 NOV 2009



ELEV 1010	D
-----------	----------

TDZ/CL Rwy 11
REIL Rwys 15, 29 and 33
HIRL Rwy 11-29 **⓪**
MIRL Rwy 15-33 **⓪**

CATEGORY	A	B	C	D
LPV DA	1334/40		353 (400-¾)	
RNAV/ VNAV DA	NA			
RNAV MDA	1520/24	539 (600-½)	1520/50 539 (600-1)	1520/60 539 (600-1 ¼)
CIRCLING	1540 - 1 ¼ 530 (600-1 ¼)	1640 - 1 ¼ 630 (700-1 ¼)	1720 - 2 710 (700-2)	2000 - 3 990 (1000-3)