

ILS or LOC RWY 29

WORCESTER RGNL (ORH)

LOC/DME I-EKW 110.9 Chan 46	APP CRS 289°	Rwy Idg TDZE Apt Elev	7000 991 1010
--	------------------------	-----------------------------	--

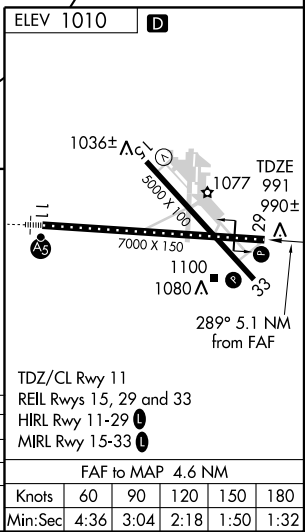
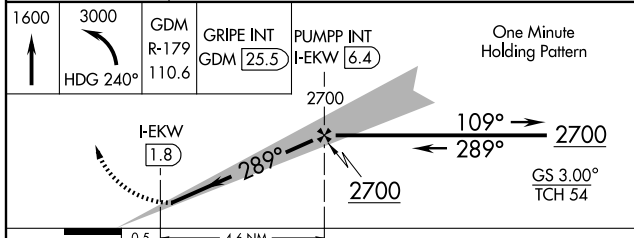
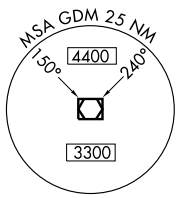
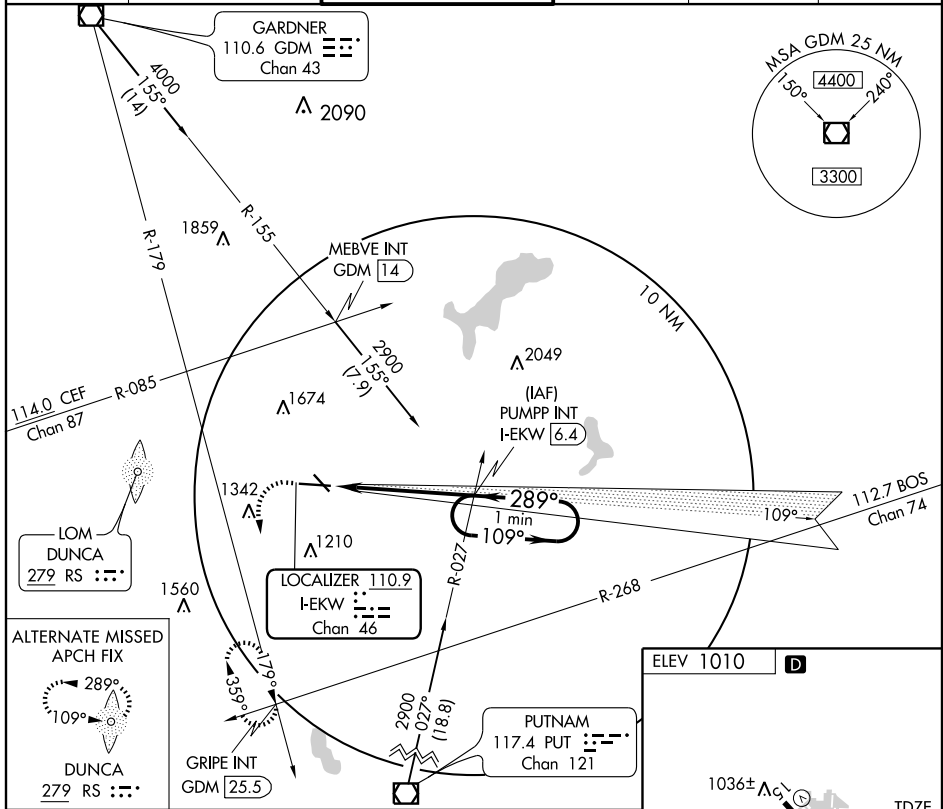
Autopilot coupled approach NA below 1226 feet. DME REQUIRED.
 If local altimeter setting not received, use Laurence G. Hanscom Fld altimeter setting and increase all DAs/MDAs 200'.

MISSED APPROACH: Climb to 1600 then climbing left turn to 3000 via heading 240° and GDM R-179 to GRIPE Int/GDM 25.5 DME and hold.

ATIS 126.55	BRADLEY APP CON 119.0 327.1	WORCESTER TOWER ★ 120.5 (CTAF) 263.0	GND CON 123.85	CLNC DEL 128.65	UNICOM 122.95
-----------------------	---------------------------------------	--	--------------------------	---------------------------	-------------------------

NE-1, 22 OCT 2009 to 19 NOV 2009

NE-1, 22 OCT 2009 to 19 NOV 2009



CATEGORY	A	B	C	D
S-ILS 29		1191/40	200 (200-¾)	
S-LOC 29		1260/50	269 (300-1)	
CIRCLING	1540-1 530 (600-1)	1640-1 630 (700-1)	1720-2 710 (800-2)	2000-3 990 (1000-3)

FAF to MAP 4.6 NM					
Knots	60	90	120	150	180
Min:Sec	4:36	3:04	2:18	1:50	1:32