

ILS or LOC RWY 11

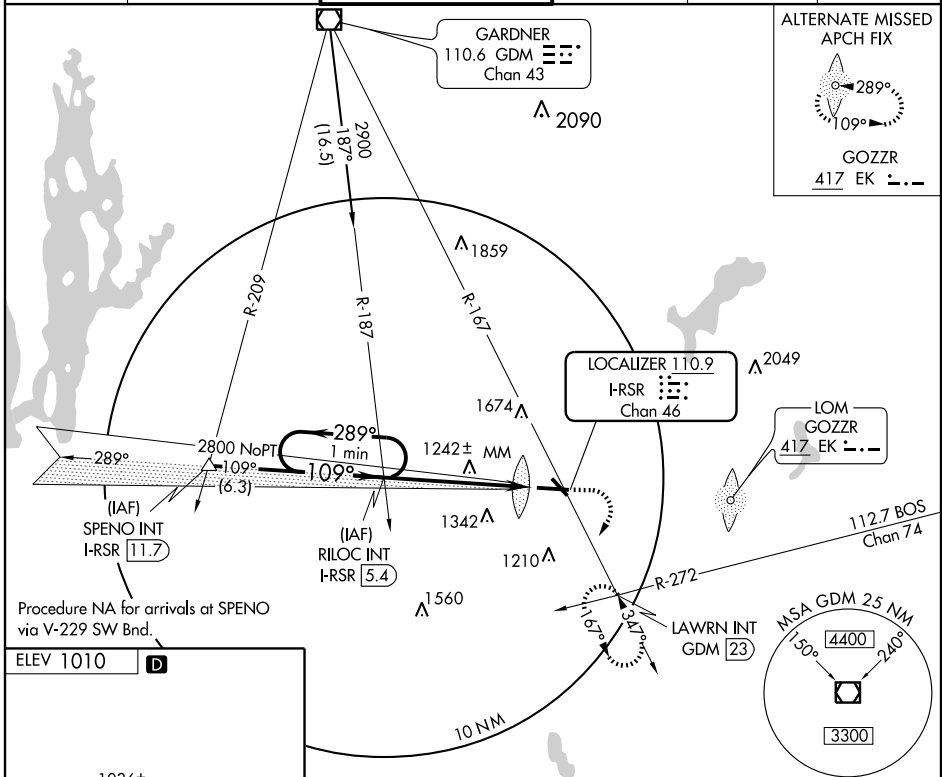
WORCESTER RGNL (ORH)

LOC/DME I-RSR 110.9 Chan 46	APP CRS 109°	Rwy Ldg 7000 TDZE 981 Apt Elev 1010
--	------------------------	--

▼ If local altimeter setting not received, use Laurence G. Hanscom Fld altimeter setting and increase all DAs/MDAs 200'.
 ▲ VDP NA when using Laurence G. Hanscom Fld altimeter setting.

MALSR MISSED APPROACH: Climb to 1400 then climbing right turn to 3000 via GDM VOR/DME R-167 to LAWRN Int/GDM 23 DME and hold.

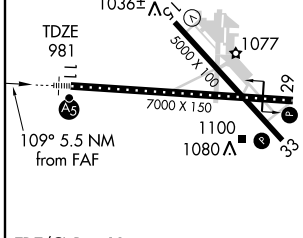
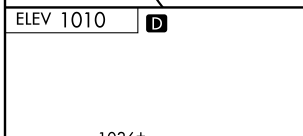
ATIS 126.55	BRADLEY APP CON 119.0 327.1	WORCESTER TOWER ★ 120.5 (CTAF) 263.0	GND CON 123.85	CLNC DEL 128.65	UNICOM 122.95
-----------------------	---------------------------------------	--	--------------------------	---------------------------	-------------------------



NE-1, 22 OCT 2009 to 19 NOV 2009

NE-1, 22 OCT 2009 to 19 NOV 2009

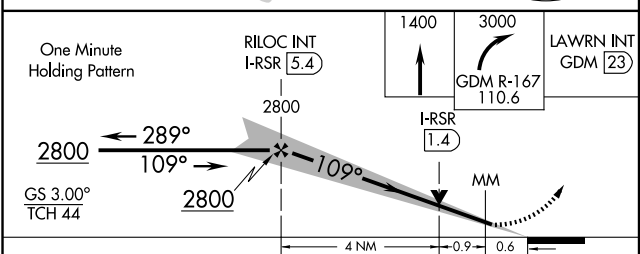
Procedure NA for arrivals at SPENO via V-229 SW Brd.



TDZ/CL Rwy 11
 REIL Rws 15, 29 and 33
 HIRL Rwy 11-29
 MIRL Rwy 15-33

FAF to MAP 5.5 NM

Knots	60	90	120	150	180
Min:Sec	5:30	3:40	2:45	2:12	1:50



CATEGORY	A	B	C	D
S-ILS 11		1181/18	200 (200-½)	
S-LOC 11	1500/24	519 (500-½)	1500/50 519 (500-1)	1500/60 519 (500-1¼)
CIRCLING	1540-1 530 (600-1)	1640-1 630 (700-1)	1720-2 710 (800-2)	2000-3 990 (1000-3)