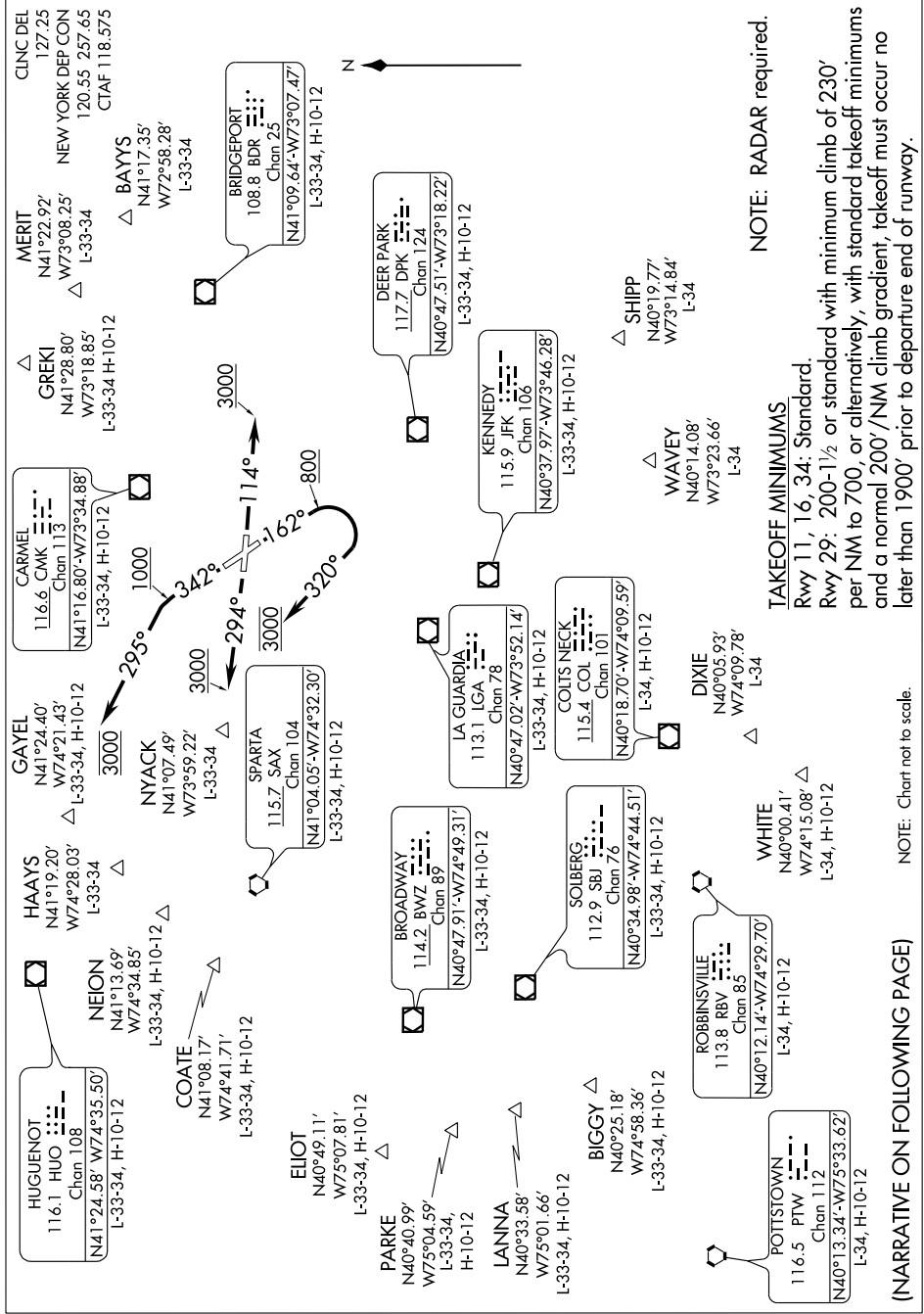


# WESTCHESTER TWO DEPARTURE

WHITE PLAINS, NEW YORK

6002 22 OCT 2009 to 19 NOV 2009



NOTE: RADAR required.

### TAKEOFF MINIMUMS

Rwy 11, 16, 34: Standard.  
 Rwy 29: 200-1½ or standard with minimum climb of 230' per NM to 700, or alternatively, with standard takeoff minimums and a normal 200'/NM climb gradient, takeoff must occur no later than 1900' prior to departure end of runway.

NOTE: Chart not to scale.

(NARRATIVE ON FOLLOWING PAGE)

# WESTCHESTER TWO DEPARTURE

WHITE PLAINS, NEW YORK

NE-2, 22 OCT 2009 to 19 NOV 2009