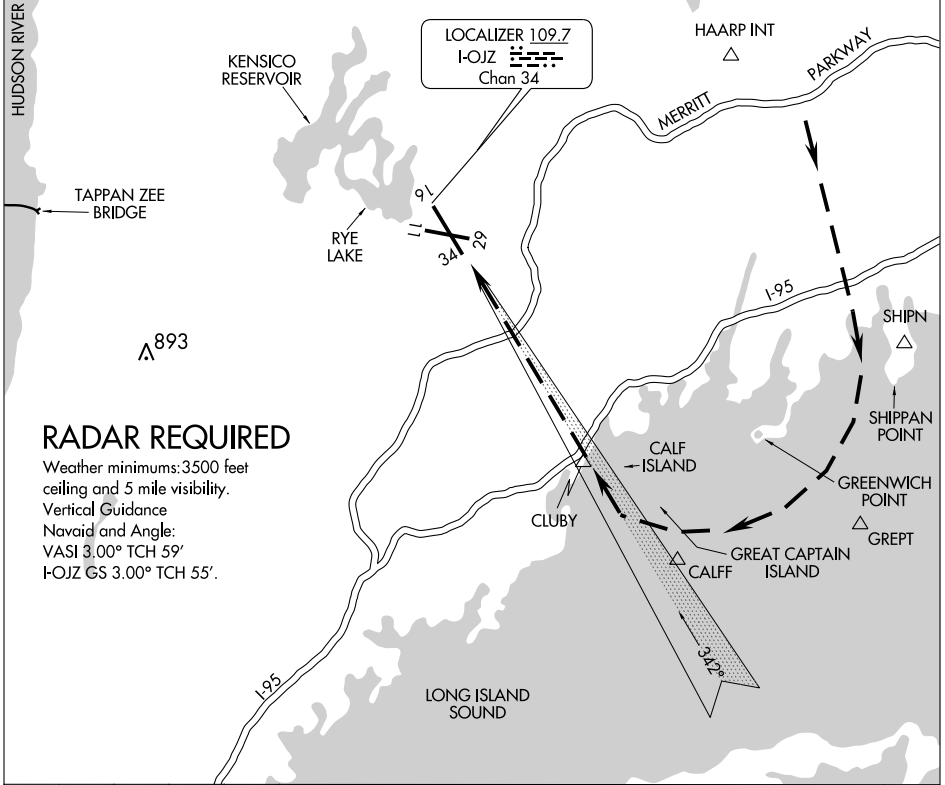


# SOUND VISUAL RWY 34

AL-651 (FAA)

ATIS 133.8  
 NEW YORK APP CON  
 126.4 120.8 257.65  
 WESTCHESTER TOWER ★  
 118.575 (CTAF) 284.65  
 GND CON  
 121.825  
 CLNC DEL  
 127.25  
 UNICOM 122.95



NE-2, 22 OCT 2009 to 19 NOV 2009

NE-2, 22 OCT 2009 to 19 NOV 2009

## RADAR REQUIRED

Weather minimums: 3500 feet  
 ceiling and 5 mile visibility.  
 Vertical Guidance  
 Navaid and Angle:  
 VASI 3.00° TCH 59'  
 I-OJZ GS 3.00° TCH 55'.

1 NM	3	4	5	6	7	8	9	10	11	12	13	14	15	16
------	---	---	---	---	---	---	---	----	----	----	----	----	----	----

## SOUND VISUAL RWY 34

When cleared for a Sound Approach to RWY 34, maintain 3000 feet until south of the shoreline on base leg (2000 feet when authorized by ATC).

Fly depicted track to remain offshore of Greenwich Point.

# SOUND VISUAL RWY 34

41°04'N-73°43'W