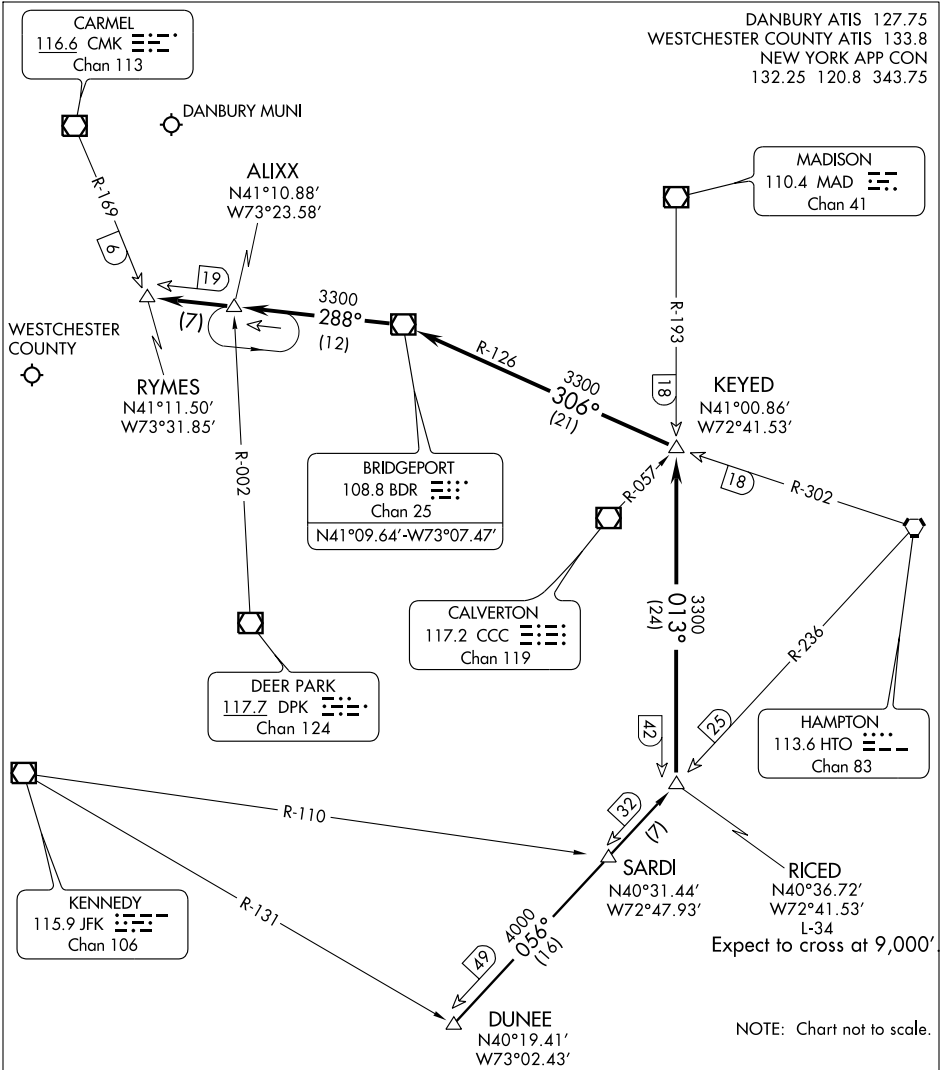


RICED FOUR ARRIVAL (RICED.RICED4)

WHITE PLAINS, NEW YORK



NE-2, 22 OCT 2009 to 19 NOV 2009

NE-2, 22 OCT 2009 to 19 NOV 2009

ARRIVAL ROUTE DESCRIPTION

DUNEE TRANSITION (DUNEE.RICED4): From over DUNEE INT via HTO R-236 to RICED INT, thence. . . .

. . . . From over RICED INT via MAD R-193 to intercept BDR R-126 to BDR VOR/DME then via BDR R-288 to RYMES INT. Expect radar vectors to final approach course.

RICED FOUR ARRIVAL (RICED.RICED4)

WHITE PLAINS, NEW YORK