

# RNAV (GPS) RWY 34

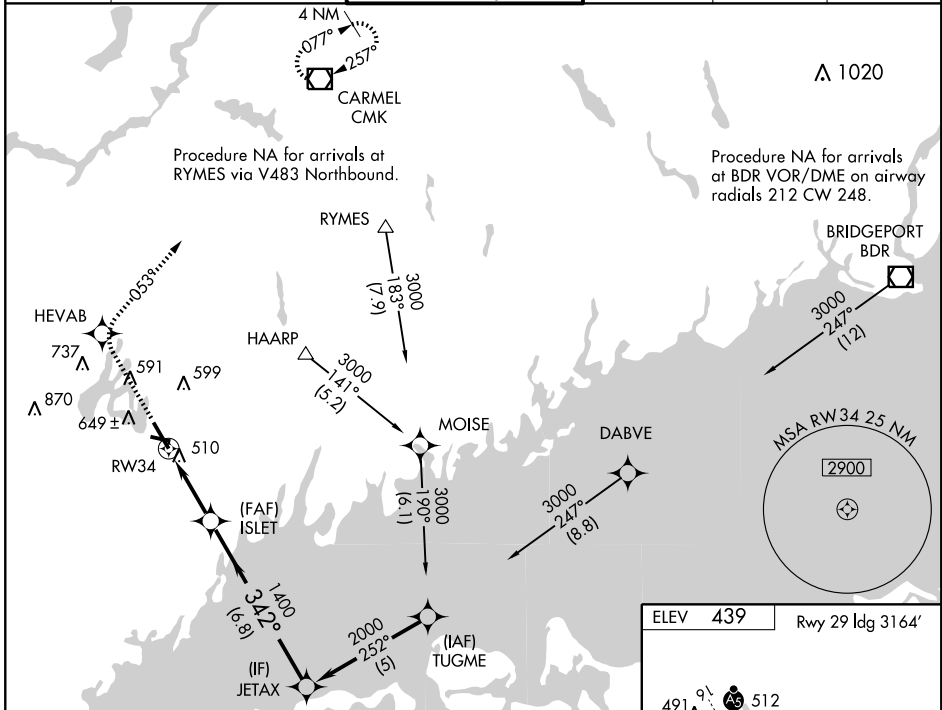
WHITE PLAINS/ WESTCHESTER COUNTY (HPN)

WAAS CH <b>99410</b> <b>W34A</b>	APP CRS <b>342°</b>	Rwy Idg TDZE <b>402</b> Apt Elev <b>439</b>	<b>6548</b>
--	------------------------	---	-------------

**⚠** Circling to Rwy 34, Rwy 29, and Rwy 11 NA at night. Baro-VNAV NA when using La Guardia altimeter setting. For uncompensated Baro-VNAV systems, LNAV/VNAV NA below -15°C (5°F) or above 47°C (116°F). DME/DME RNP-0.3 NA. Visibility reduction by helicopters NA. When local altimeter setting not received, use La Guardia altimeter setting and increase LPV DA to 833 ft; LNAV/VNAV DA to 884 ft, and all MDA 120 ft; increase LPV and LNAV/VNAV visibility ¼ mile all Cats; LNAV Cat C ¼ mile, Cat D ½ mile; Circling Cat C and D ¼ mile.

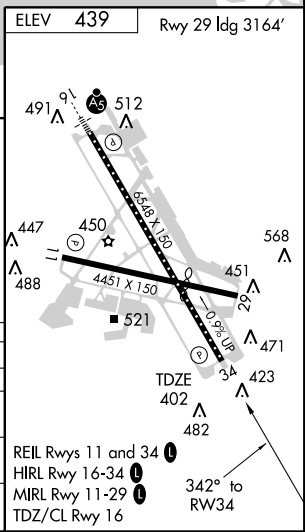
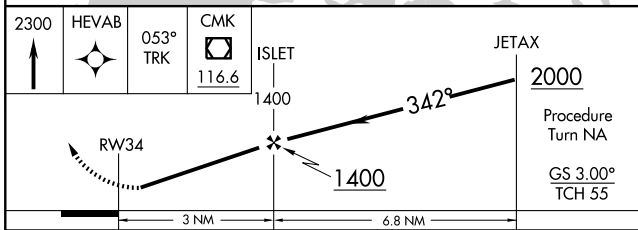
**MISSED APPROACH:** Climb to 2300 direct HEVAB and via 053° track to CMK VOR/DME and hold.

ATIS <b>133.8</b>	NEW YORK APP CON <b>126.4 120.8 257.65</b>	WESTCHESTER TOWER ★ <b>118.575</b> (CTAF) <b>0 284.65</b>	GND CON <b>121.825</b>	CLNC DEL <b>127.25</b>	UNICOM <b>122.95</b>
----------------------	---	--	---------------------------	---------------------------	-------------------------



NE-2, 22 OCT 2009 to 19 NOV 2009

NE-2, 22 OCT 2009 to 19 NOV 2009



CATEGORY	A	B	C	D
LPV DA	730/60		328 (300-1¼)	
LNAV/VNAV DA	781-1½		379 (400-1½)	
LNAV MDA	820/50	418 (400-1)	820/60	418 (400-1¼)
CIRCLING	960-1	521 (600-1)	960-1½	1000-2 561 (600-2)