

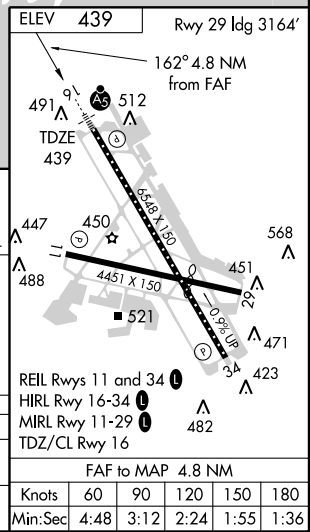
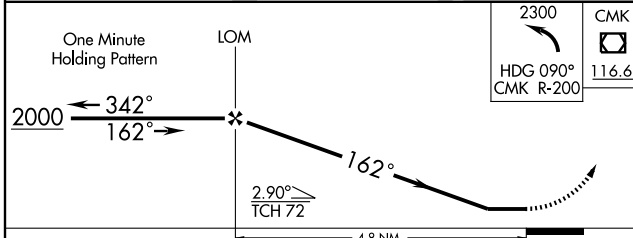
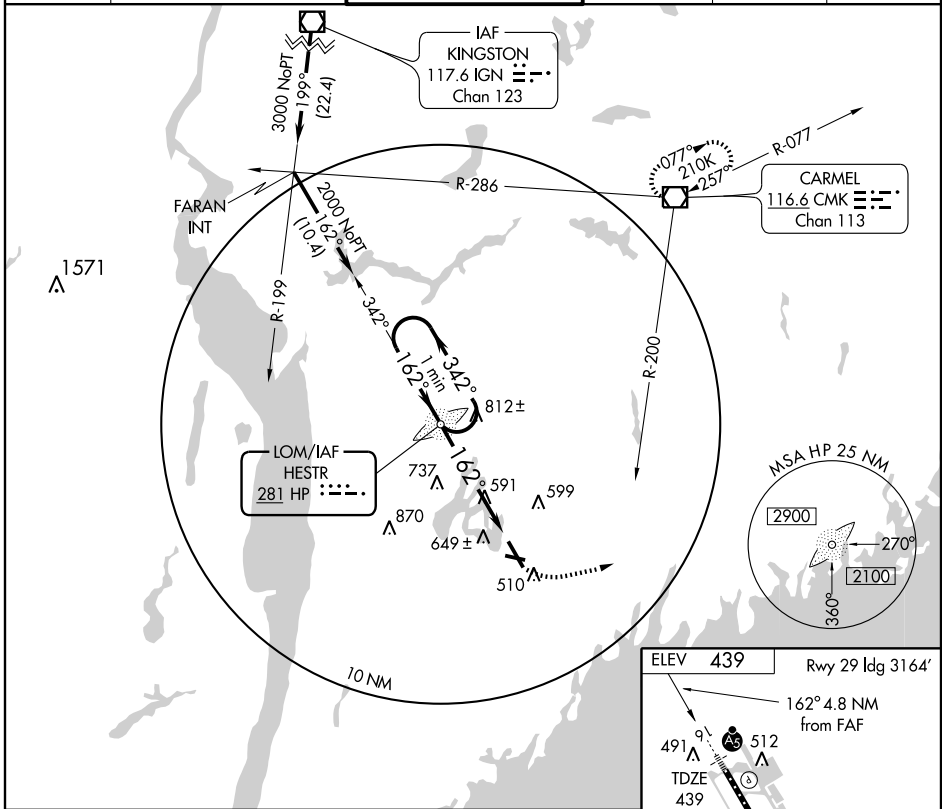
# NDB RWY 16

WHITE PLAINS/ WESTCHESTER COUNTY (HPN)

LOM HP <b>281</b>	APP CRS <b>162°</b>	Rwy ldg <b>6548</b> TDZE <b>439</b> Apt Elev <b>439</b>
----------------------	------------------------	---

	MALS R-200	MISSED APPROACH: Climbing left turn to 2300 via heading 090° and CMK R-200 to CMK VOR/DME and hold.

ATIS <b>133.8</b>	NEW YORK APP CON <b>126.4 120.8 257.65</b>	WESTCHESTER TOWER ★ <b>118.575</b> (CTAF) <b>284.65</b>	GND CON <b>121.825</b>	CLNC DEL <b>127.25</b>	UNICOM <b>122.95</b>
----------------------	---	--	---------------------------	---------------------------	-------------------------



CATEGORY	A	B	C	D
S-16	1120/40	681 (700-3/4)	1120 - 1 1/2 681 (700-1 1/2)	1120 - 2 681 (700-2)
CIRCLING	1120 - 1	681 (700-1)	1120 - 2 681 (700-2)	1120 - 2 1/4 681 (700-2 1/4)

FAF to MAP 4.8 NM					
Knots	60	90	120	150	180
Min:Sec	4:48	3:12	2:24	1:55	1:36

# NDB RWY 16

NE-2, 22 OCT 2009 to 19 NOV 2009

NE-2, 22 OCT 2009 to 19 NOV 2009