

# RNAV (GPS) RWY 3

WHEELING OHIO COUNTY (HLG)

WAAS CH <b>90513</b> <b>W03A</b>	APP CRS <b>033°</b>	Rwy Idg TDZE <b>1171</b> Apt Elev <b>1195</b>	<b>5001</b>
--	------------------------	---	-------------

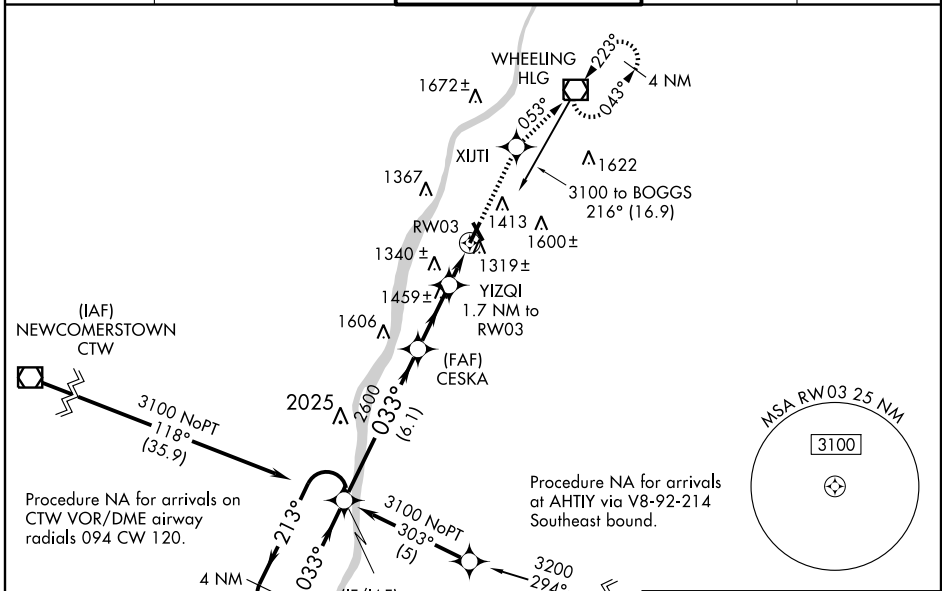
**⚠** Inoperative table does not apply to LNAV/VNAV all Cats and LNAV Cat C. For uncompensated Baro-VNAV systems, LNAV/VNAV NA below -17°C (2°F) or above 46°C (114°F). DME/DME RNP-0,3 NA. When local altimeter setting not received, use Washington, PA altimeter setting and increase all DA/MDA 40 feet and Circling Cat D visibility ¼ mile. Inoperative table does not apply to LNAV/VNAV all Cats and LNAV Cat C when using Washington, PA altimeter setting. VDP and Baro-VNAV NA when using Washington, PA altimeter setting.

MALSF



**MISSED APPROACH:**  
Climb to 3100 direct XIJTI and via track 053° to HLG VOR/DME and hold.

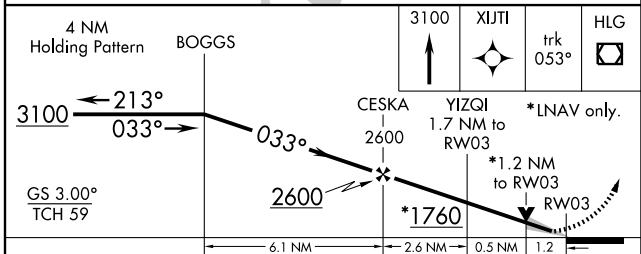
ASOS <b>127.375</b>	PITTSBURGH APP CON <b>125.275 285.575</b>	WHEELING TOWER * <b>118.1 (CTAF) 0257.8</b>	GND CON <b>121.75</b>	UNICOM <b>122.95</b>
------------------------	--	--	--------------------------	-------------------------



NE-4, 22 OCT 2009 to 19 NOV 2009

NE-4, 22 OCT 2009 to 19 NOV 2009

ELEV 1195	HIRL Rwy 3-21	MIRL Rwy 16-34	REIL Rwy 21 and 34
-----------	---------------	----------------	--------------------



CATEGORY	A	B	C	D
LPV DA		1371-3/4	200 (200-3/4)	
LNAV/VNAV DA		1646-13/4	475 (500-13/4)	
LNAV MDA	1600-3/4	429 (500-3/4)	1600-1 1/4 429 (500-1 1/4)	1600-1 1/2 429 (500-1 1/2)
CIRCLING	1720-1	525 (600-1)	1740-1 1/2 545 (600-1 1/2)	1900-2 1/4 705 (800-2 1/4)

