

# ILS or LOC RWY 3

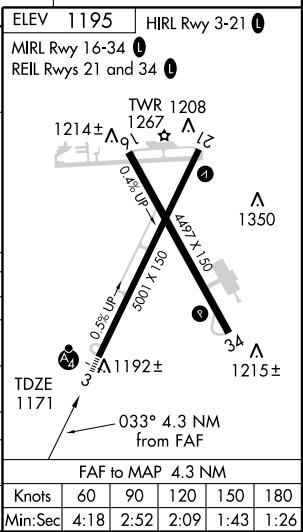
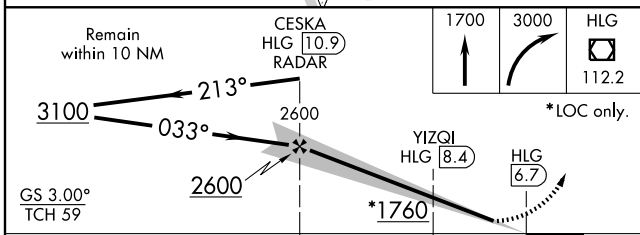
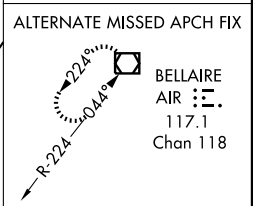
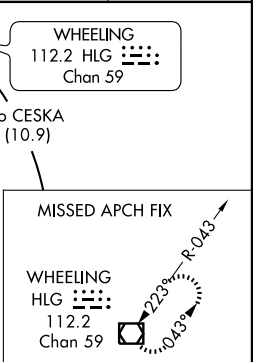
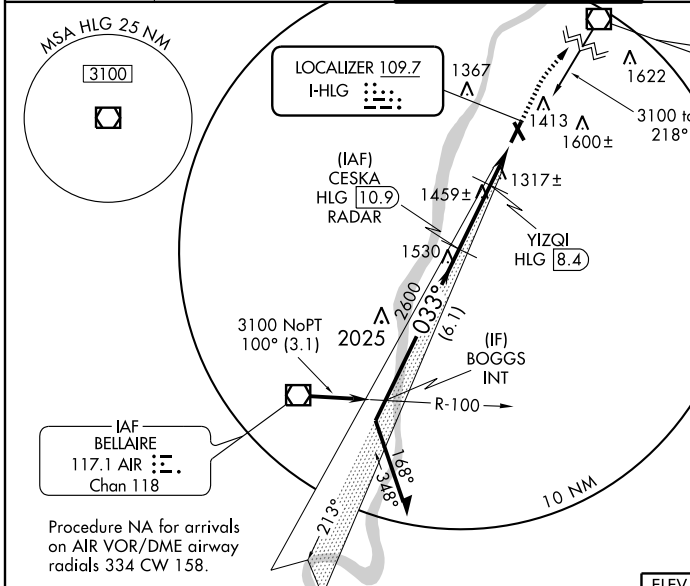
WHEELING OHIO COUNTY (HLG)

LOC I-HLG <b>109.7</b>	APP CRS <b>033°</b>	Rwy Idg <b>5001</b>
		TDZE <b>1171</b>
		Apt Elev <b>1195</b>

**▼** DME or Radar required. Autopilot coupled approach NA below 1401.  
**▲** Inoperative table does not apply to S-LOC 3 Cat C and YIZQI Fix Minimums S-LOC 3 Cat C. When local altimeter setting not received, use Washington, PA altimeter setting and increase all DA/MDA 40 feet and S-LOC 3 Cats C/D and Circling Cats C/D and YIZQI Fix Minimums S-LOC 3 Cat D and Circling Cat D visibilities ¼ mile. Inoperative table does not apply to S-LOC 3 Cat C and YIZQI Fix Minimums S-LOC Cat C when using Washington, PA altimeter setting.

**MALSF**  
 MISSED APPROACH:  
 Climb to 1700 then climbing right turn to 3000 direct HLG VOR/DME and hold.

ASOS <b>127.375</b>	PITTSBURGH APP CON <b>125.275 285.575</b>	WHEELING TOWER * <b>118.1(CTAF) 0257.8</b>	GND CON <b>121.75</b>	UNICOM <b>122.95</b>
------------------------	--	---	--------------------------	-------------------------



CATEGORY	A	B	C	D
S-ILS 3		1371-¾	200 (200-¾)	
S-LOC 3	1760-¾	589 (600-¾)	1760-1½ 589 (600-1½)	1760-1¾ 589 (600-1¾)
CIRCLING	1760-1	565 (600-1)	1760-1½ 565 (600-1½)	1900-2¼ 705 (800-2¼)
YIZQI FIX MINIMUMS				
S-LOC 3	1580-¾	409 (400-¾)	1580-1¼	409 (400-1¼)
CIRCLING	1720-1	525 (600-1)	1740-1½ 545 (600-1½)	1900-2¼ 705 (800-2¼)

NE-4, 22 OCT 2009 to 19 NOV 2009

NE-4, 22 OCT 2009 to 19 NOV 2009

Knots	60	90	120	150	180
Min:Sec	4:18	2:52	2:09	1:43	1:26