

SAGINAW, MICHIGAN

AL-648 (FAA)

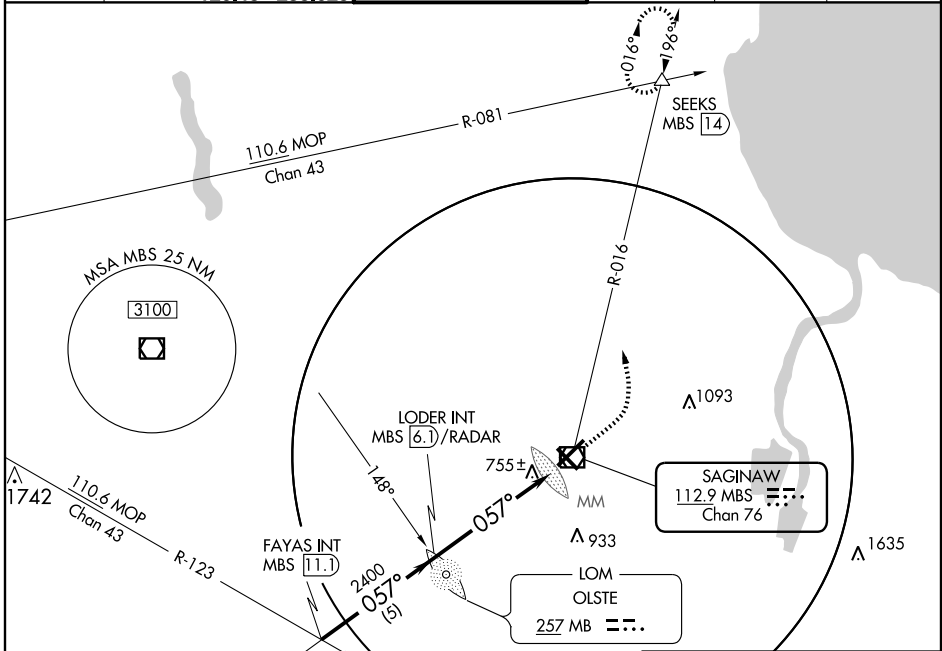
VOR/DME MBS <b>112.9</b> Chan 76	APP CRS <b>057°</b>	Rwy Idg TDZE <b>666</b> Apt Elev <b>668</b>	<b>8002</b>
--	------------------------	---	-------------

# VOR RWY 5

SAGINAW/MBS INTL (MBS)

<b>ASR</b> Category D S-5 visibility increased to RVR 6000 for inoperative SSALR.	<b>MALSR</b> 	<b>MISSED APPROACH:</b> Climb to 2400 then left turn via MBS R-016 to Seeks Int/1.4 DME and hold.
--	------------------	---

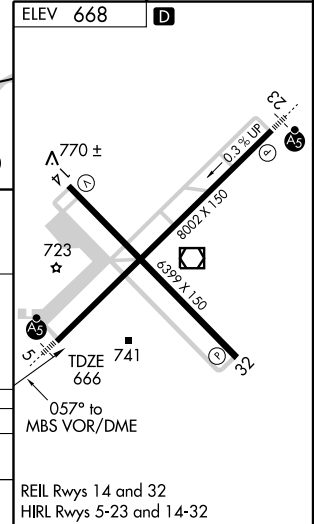
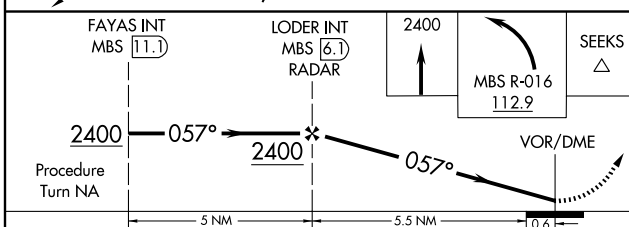
ATIS <b>125.925</b>	SAGINAW APP CON ★ 050°-229° <b>120.95</b> <b>235.625</b> 230°-049° <b>126.45</b> <b>235.625</b>	SAGINAW TOWER ★ <b>120.1</b> (CTAF) <b>257.7</b>	GND CON <b>121.7</b>	CLNC DEL <b>121.85</b>	UNICOM <b>122.95</b>
------------------------	---	---	-------------------------	---------------------------	-------------------------



EC-1, 22 OCT 2009 to 19 NOV 2009

EC-1, 22 OCT 2009 to 19 NOV 2009

## DME, ADF or RADAR REQUIRED



CATEGORY	A	B	C	D
S-5	1060/24	394 (400-½)		1060/50 394 (400-1)
CIRCLING	1100-1 432 (500-1)	1120-1 452 (500-1)	1120-1 ½ 452 (500-1 ½)	1220-2 552 (600-2)

SAGINAW, MICHIGAN  
Amdt 14A 09295

43°32'N - 84°05'W

# SAGINAW/MBS INTL (MBS) VOR RWY 5