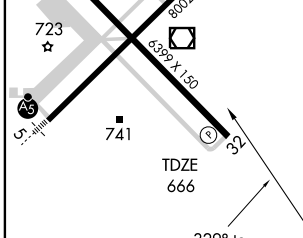
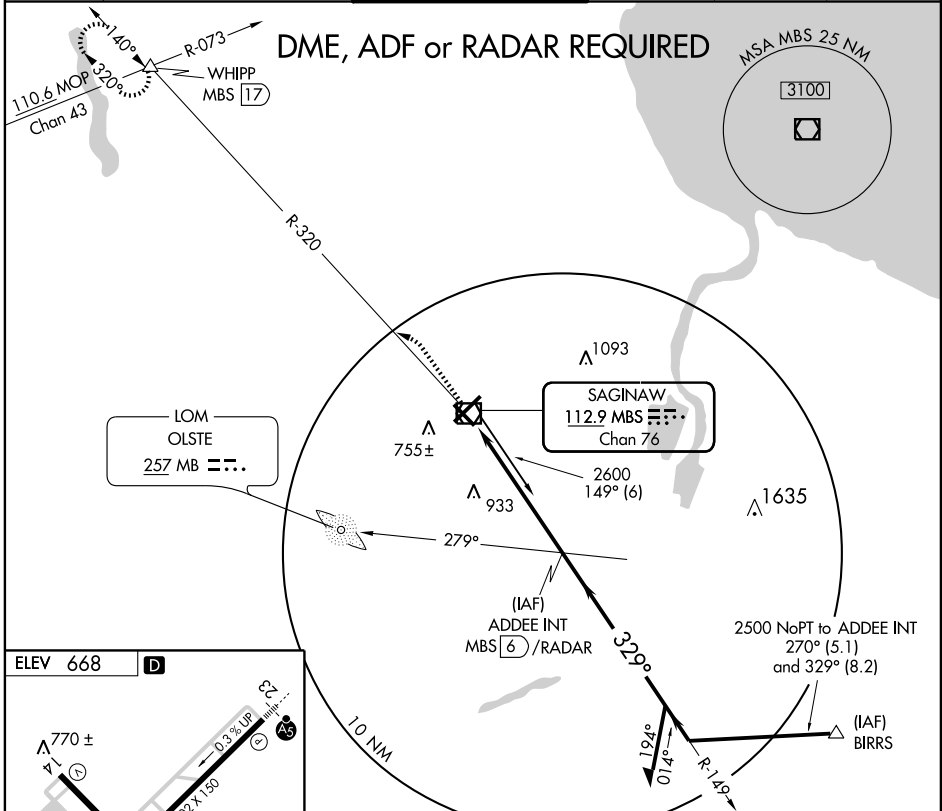


VOR/DME MBS <b>112.9</b> Chan <b>76</b>	APP CRS <b>329°</b>	Rwy Idg <b>6399</b> TDZE <b>666</b> Apt Elev <b>668</b>
---	------------------------	---

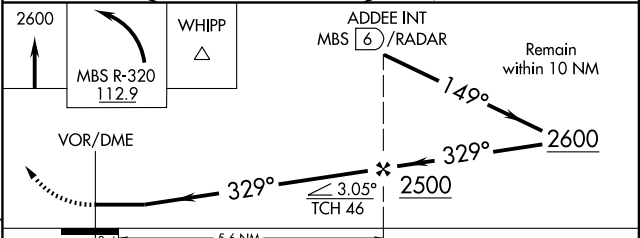
**VOR RWY 32**  
SAGINAW/MBS INTL (MBS)

ASR	MISSED APPROACH: Climb to 2600 then left turn via MBS R-320 to WHIPP Int/17 DME and hold.				
-----	---	--	--	--	--

ATIS <b>125.925</b>	SAGINAW APP CON ★ 050°-229° <b>120.95 235.625</b> 230°-049° <b>126.45 235.625</b>	SAGINAW TOWER ★ 120.1 (CTAF) <b>257.7</b>	GND CON <b>121.7</b>	CLNC DEL <b>121.85</b>	UNICOM <b>122.95</b>
------------------------	---	--	-------------------------	---------------------------	-------------------------



REIL Rwy 14 and 32  
HIRL Rwy 5-23 and 14-32



CATEGORY	A	B	C	D
S-32	1200-1 534 (600-1)		1200-1½ 534 (600-1½)	1200-1¾ 534 (600-1¾)
CIRCLING	1200-1 532 (600-1)		1200-1½ 532 (600-1½)	1220-2 552 (600-2)

EC-1, 22 OCT 2009 to 19 NOV 2009

EC-1, 22 OCT 2009 to 19 NOV 2009