

SAGINAW, MICHIGAN

AL-648 (FAA)

WAAS CH 78011 W32A	APP CRS 320°	Rwy Idg TDZE Apt Elev	6399 665 668
---------------------------------	------------------------	-----------------------------	---

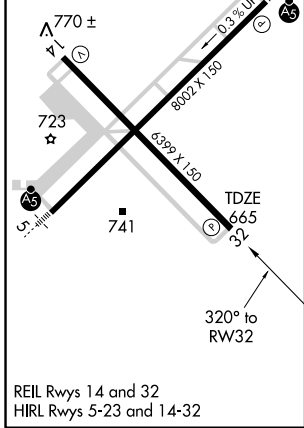
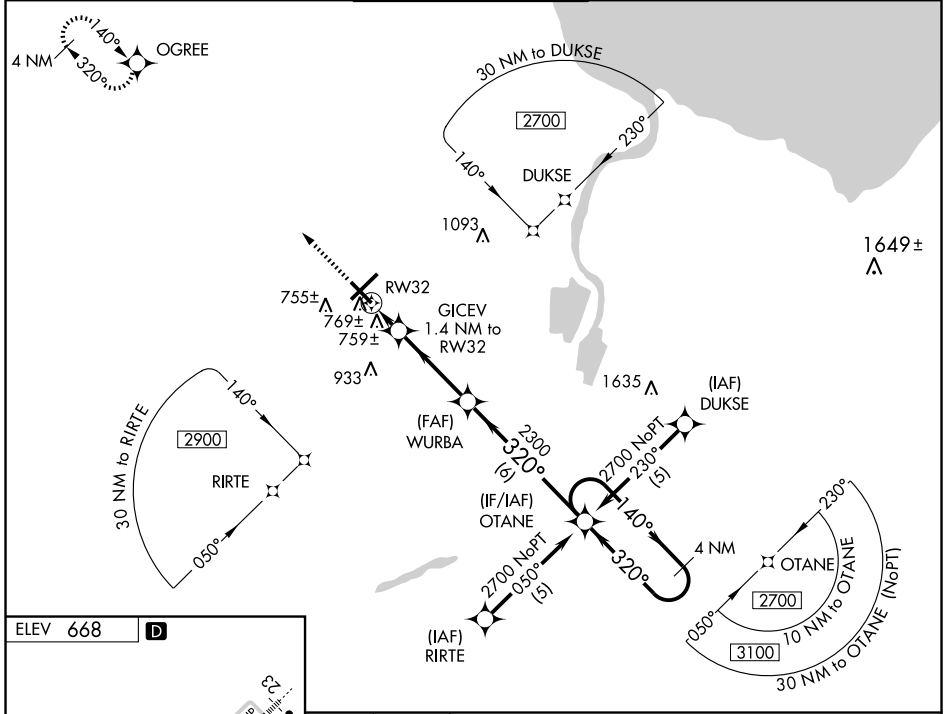
RNAV (GPS) RWY 32

SAGINAW/ MBS INTL (MBS)

ASR Baro-Vnav NA when using Saginaw County H. W. Browne altimeter setting. For uncompensated Baro-Vnav systems, LNAV/VNAV NA below -16°C (4°F) or above 47° (116°F). When local altimeter setting not received, use Saginaw County H. W. Browne altimeter setting and increase all DA 36 feet and all MDA 40 feet, increase LPV all Cats. visibility and LNAV Cat. C. visibility ¼ mile. DME/DME RNP- 0.3 NA.

MISSED APPROACH: Climb to 2300 direct OGREE and hold.

ATIS 125.925	SAGINAW APP CON * 050°-229° 120.95 235.625 230°-049° 126.45 235.625	SAGINAW TOWER * 120.1 (CTAF) 0 257.7	GND CON 121.7	CLNC DEL 121.85	UNICOM 122.95
------------------------	---	---	-------------------------	---------------------------	-------------------------



CATEGORY	* LNAV only.		OGREE		OTANE	
	* LNAV only.		OGREE		OTANE	
LPV DA	964-1		299 (300-1)			
LNAV/VNAV DA	1057-1½		392 (400-1½)			
LNAV MDA	1040-1		375 (400-1)		1040-1¼ 375 (400-1¼)	
CIRCLING	1100-1	1120-1	1120-1½	1220-2		
	432 (500-1)	452 (500-1)	452 (500-1½)	552 (600-2)		

SAGINAW, MICHIGAN
Amdt 1 09295

43°32'N-84°05'W

RNAV (GPS) RWY 32

SAGINAW/ MBS INTL (MBS)

EC-1, 22 OCT 2009 to 19 NOV 2009

EC-1, 22 OCT 2009 to 19 NOV 2009