


RNAV (GPS) RWY 23

SAGINAW/MBS INTL (MBS)

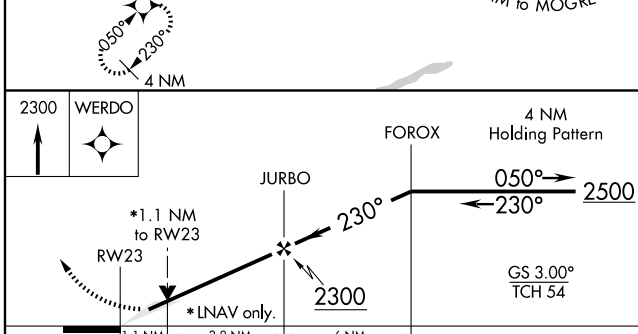
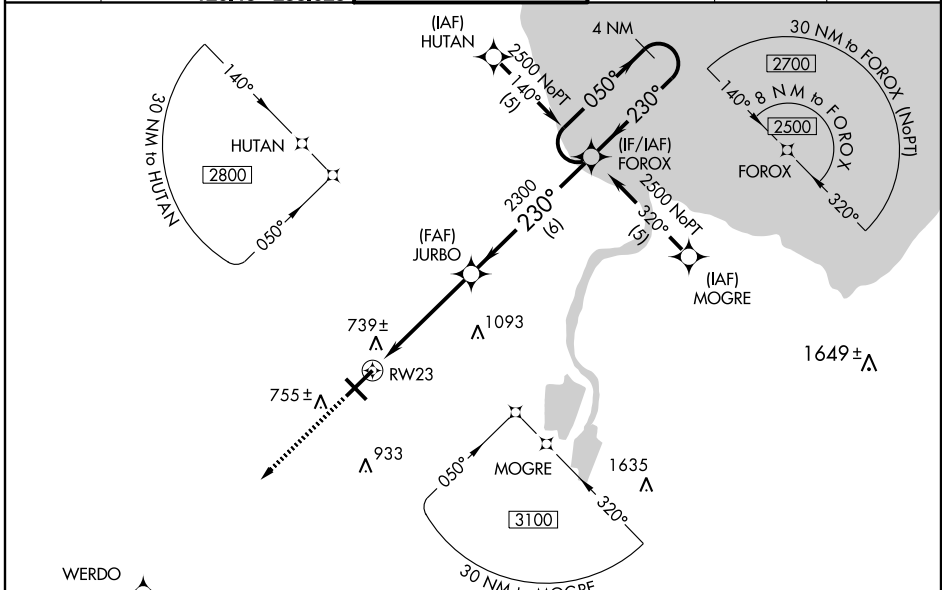
WAAS CH 49010 W23A	APP CRS 230°	Rwy Idg TDZE Apt Elev	8002 661 668
--	------------------------	-----------------------------	---

ASR When local altimeter setting not received, use Saginaw County H. W. Browne altimeter setting and increase all DA 36 feet and all MDA 40 feet, increase LNAV/VNAV all Cats visibility ¼ mile, LNAV Cat C visibility ¼ mile. Baro-VNAV and VDP NA when using Saginaw County H. W. Browne altimeter setting. For inoperative MALSR, increase LNAV Cat D visibility to 1¼. For uncompensated Baro-VNAV systems, LNAV/VNAV NA below -16°C (4°F) or above 47°C (116°F). DME/DME RNP-0.3 NA.

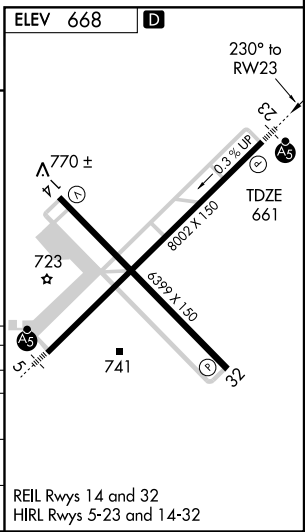
MALSR 

MISSED APPROACH: Climb to 2300 direct WERDO and hold.

ATIS 125.925	SAGINAW APP CON * 050°-229° 120.95 235.625 230°-049° 126.45 235.625	SAGINAW TOWER * 120.1 (CTAF) 257.7	GND CON 121.7	CLNC DEL 121.85	UNICOM 122.95
------------------------	---	--	-------------------------	---------------------------	-------------------------



CATEGORY	A	B	C	D
LPV DA		861-½	200 (200-½)	
LNAV/VNAV DA		1034-¾	373 (400-¾)	
LNAV MDA	1060-½	399 (400-½)		1060-1 399 (400-1)
CIRCLING	1100-1 432 (500-1)	1120-1 452 (500-1)	1120-1½ 452 (500-1½)	1220-2 552 (600-2)



EC-1, 22 OCT 2009 to 19 NOV 2009

EC-1, 22 OCT 2009 to 19 NOV 2009