


SAGINAW, MICHIGAN

AL-648 (FAA)

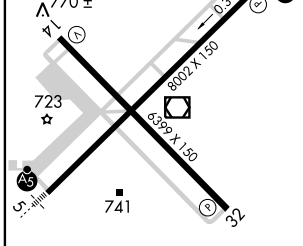
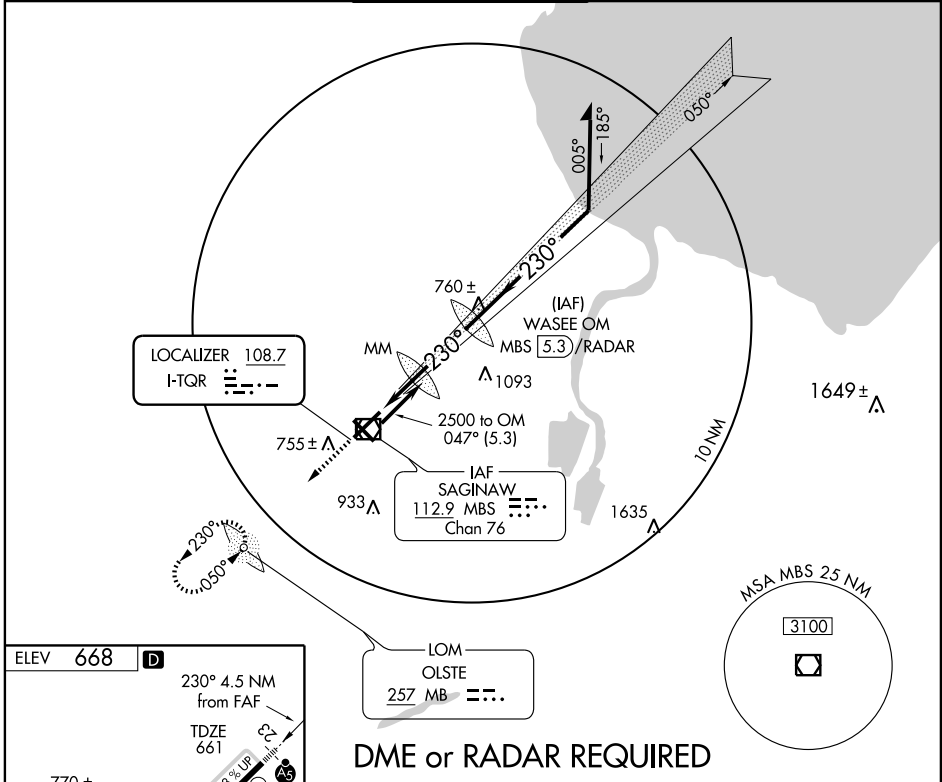
ILS RWY 23

SAGINAW/MBS INTL (MBS)

LOC I-TQR 108.7	APP CRS 230°	Rwy Idg 8002
		TDZE 661
		Apt Elev 668

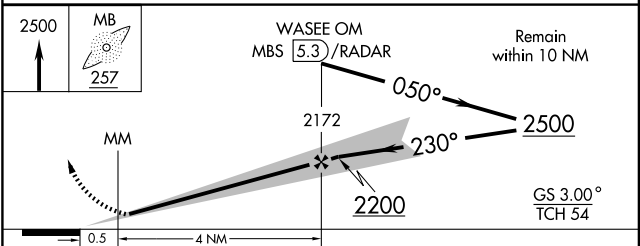
▼ Cat. D S-LOC visibility increased ¼ mile for inoperative MM. When control tower closed, ASR ACTIVATE MALSR Rwy 23 and SSALR Rwy 5-CTAF. **MALSR**  MISSED APPROACH: Climb to 2500 direct OLSTE LOM and hold.

ATIS 125.925	SAGINAW APP CON ★ 050°-229° 120.95 235.625 230°-049° 126.45 235.625	SAGINAW TOWER ★ 120.1 (CTAF) 0 257.7	GND CON 121.7	CLNC DEL 121.85	UNICOM 122.95
------------------------	---	--	-------------------------	---------------------------	-------------------------



REIL Rwy 14 and 32
HIRL Rwy 5-23 and 14-32
FAF to MAP 4.5 NM

Knots	60	90	120	150	180
Min:Sec	4:30	3:00	2:15	1:48	1:30



CATEGORY	A	B	C	D
S-ILS 23		861-½	200 (200-½)	
S-LOC 23		1060-½	399 (400-½)	1060-¾ 399 (400-¾)
CIRCLING	1100-1 432 (500-1)	1120-1 452 (500-1)	1120-1½ 452 (500-1½)	1220-2 552 (600-2)

SAGINAW, MICHIGAN
Amdt 4A 09295

43°32'N - 84°05'W

SAGINAW/MBS INTL (MBS)

ILS RWY 23

EC-1, 22 OCT 2009 to 19 NOV 2009

EC-1, 22 OCT 2009 to 19 NOV 2009