

PELLSTON, MICHIGAN

AL-647 (FAA)

VOR RWY 23

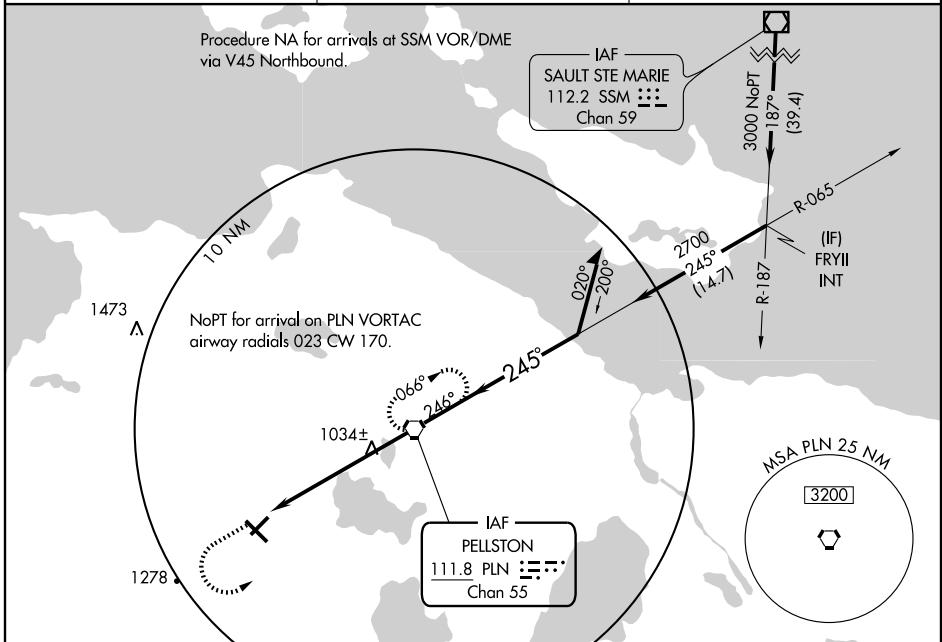
PELLSTON RGNL AIRPORT OF EMMET COUNTY (PLN)

VORTAC PLN 111.8 Chan 55	APP CRS 245°	Rwy Idg 5395 TDZE 721 Apt Elev 721
---------------------------------------	------------------------	---

⚠ When local altimeter setting not received, use Harbor Springs altimeter setting and increase all MDA 40 feet. Increase all Cat C and S-23 Cat D visibility ¼ mile. Visibility reduction by helicopters NA.

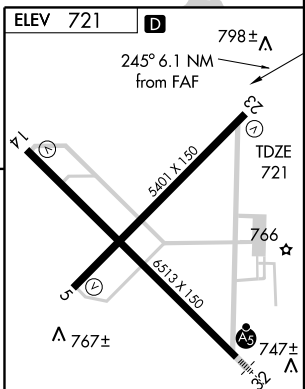
MISSED APPROACH: Climb to 2000 then climbing left turn to 2800 direct PLN VORTAC and hold.

ASOS 119.025	MINNEAPOLIS CENTER 134.6 354.05	UNICOM 123.0 (CTAF) 0
------------------------	---	---------------------------------



EC-1, 22 OCT 2009 to 19 NOV 2009

EC-1, 22 OCT 2009 to 19 NOV 2009



2000	2800	PLN 111.8
VORTAC		
Remain within 10 NM		
PLN 6.1	2700	2700
6.1 NM		
≤ 2.99° TCH 45		

HIRL Rwy 14-32 0					
MIRL Rwy 5-23 0					
REIL Rwys 5, 14, and 23 0					
FAF to MAP 6.1 NM					
Knots	60	90	120	150	180
Min:Sec	6:06	4:04	3:03	2:26	2:02

CATEGORY	A	B	C	D
S-23	1300-1	579 (600-1)	1300-1½ 579 (600-1½)	1300-1¾ 579 (600-1¾)
CIRCLING	1300-1	579 (600-1)	1300-1½ 579 (600-1½)	1420-2¼ 699 (700-2¼)

PELLSTON, MICHIGAN
Amdt 16 09295

PELLSTON RGNL AIRPORT OF EMMET COUNTY (PLN)
45°34'N - 84°48'W
VOR RWY 23