

RNAV (GPS) RWY 5

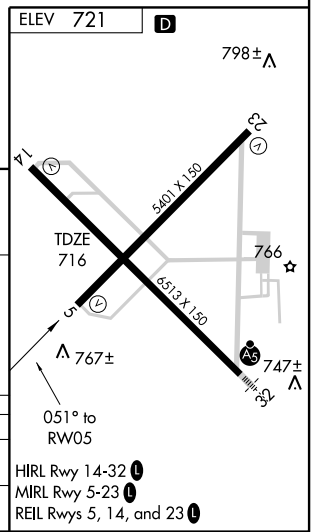
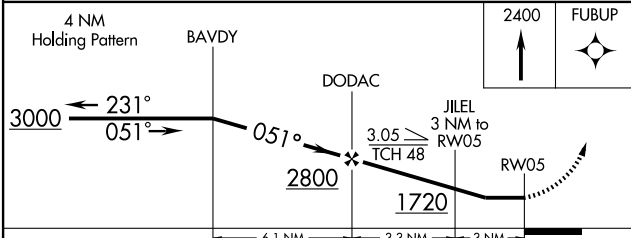
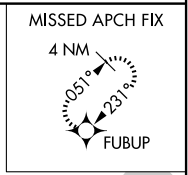
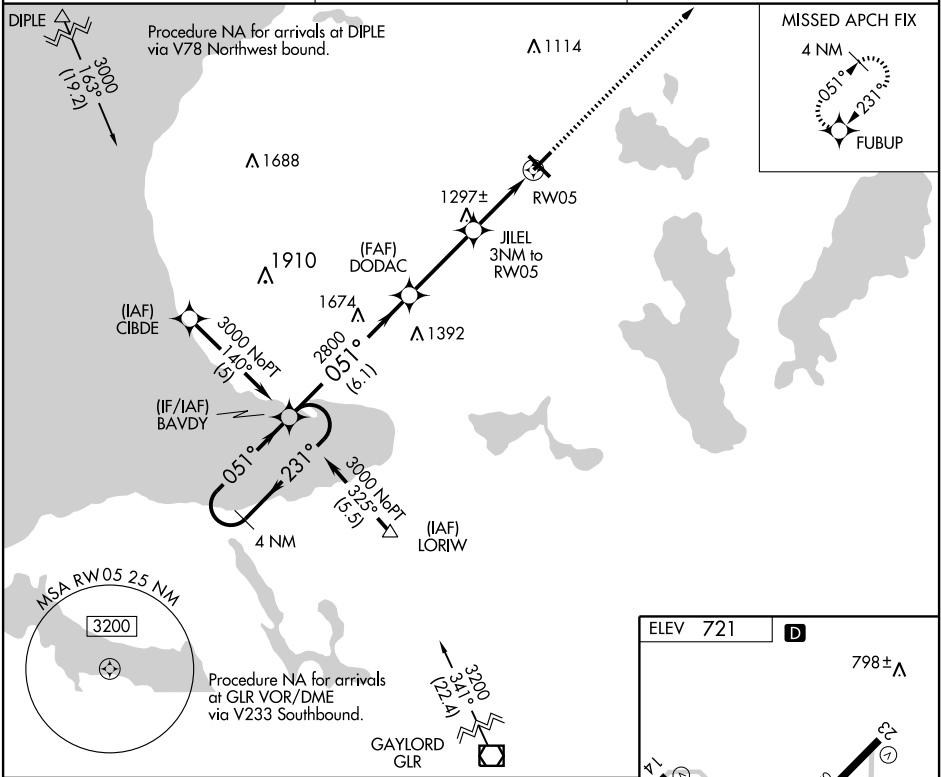
PELLSTON RGNL AIRPORT OF EMMET COUNTY (PLN)

APP CRS 051°	Rwy Idg 5395
	TDZE 716
	Aprt Elev 721

▼ DME/DME RNP-0.3 NA. Visibility reductions by helicopters NA.
▲ When local altimeter setting not received, use Harbor Springs altimeter setting and increase all MDA 40 feet, increase LNAV Cat. A/C/D visibilities ¼ mile.

MISSED APPROACH: Climb to 2400 direct FUBUP and hold.

ASOS 119.025	MINNEAPOLIS CENTER 134.6 354.05	UNICOM 123.0 (CTAF) 0
------------------------	---	---------------------------------



CATEGORY	A	B	C	D
LNAV MDA	1560-1 844 (900-1)	1560-1¼ 844 (900-1¼)	1560-2½ 844 (900-2½)	1560-2¾ 844 (900-2¾)
CIRCLING	1560-1 839 (900-1)	1560-1¼ 839 (900-1¼)	1560-2½ 839 (900-2½)	1560-2¾ 839 (900-2¾)

EC-1, 22 OCT 2009 to 19 NOV 2009

EC-1, 22 OCT 2009 to 19 NOV 2009