

PELLSTON, MICHIGAN

AL-647 (FAA)


# RNAV (GPS) RWY 32

PELLSTON RGNL AIRPORT OF EMMET COUNTY (PLN)

WAAS CH <b>77813</b> <b>W32A</b>	APP CRS <b>321°</b>	Rwy Idg <b>6512</b> TDZE <b>712</b> Apt Elev <b>721</b>
--	------------------------	---

**⚠** Inoperative table does not apply to LNAV Cat D. Baro-VNAV NA when using Harbor Springs altimeter setting. For uncompensated Baro-VNAV systems, LNAV/VNAV NA below -16°C (4°F) or above 47°C (116°F). DME/DME RNP-0.3 NA. When local altimeter setting not received, use Harbor Springs altimeter setting and increase all DA 28 feet and all MDA 40 feet. For inoperative MALSR when using Harbor Springs altimeter setting, increase LNAV Cat D visibility to 1 ¼ mile.

MALSR

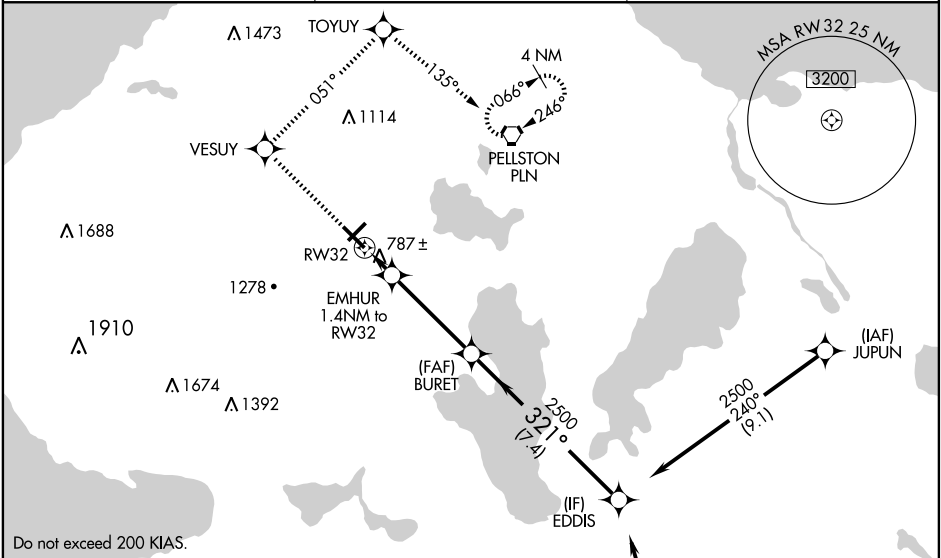


MISSED APPROACH: Climb to 2600 direct YESUY and via track 051° to TOYUY and via track 135° to PLN VORTAC and hold.

ASOS  
**119.025**

MINNEAPOLIS CENTER  
**134.6 354.05**

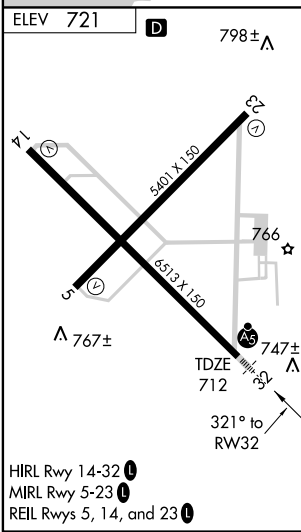
UNICOM  
**123.0 (CTAF) 0**



EC-1, 22 OCT 2009 to 19 NOV 2009

EC-1, 22 OCT 2009 to 19 NOV 2009

Do not exceed 200 KIAS.



Procedure NA for arrivals at RONDO via V609 Southbound.

2600	YESUY	051° TRK	TOYUY	135° TRK	PLN	Procedure Turn NA
------	-------	----------	-------	----------	-----	-------------------

\*LNAV only

LNAV only diagram showing paths from YESUY, TOYUY, and PLN to RW32 via BURET and EDDIS. Distances of 1.4 NM, 3.9 NM, and 7.4 NM are marked. Altitudes of 2500 and 1220\* are shown.

CATEGORY	A	B	C	D
LPV DA		912-½	200 (200-½)	
LNAV/VNAV DA		1056-¾	344 (400-¾)	
LNAV MDA		1040-½	328 (400-½)	1040-1 328 (400-1)
CIRCLING	1260-1 539 (600-1)	1280-1 559 (600-1)	1280-1½ 559 (600-1½)	1420-2 ¼ 699 (700-2¼)

PELLSTON, MICHIGAN  
Orig 09295

PELLSTON RGNL AIRPORT OF EMMET COUNTY (PLN)  
45°34'N - 84°48'W  
**RNAV (GPS) RWY 32**