

PELLSTON, MICHIGAN

AL-647 (FAA)

WAAS CH 81915 W23A	APP CRS 231°	Rwy Idg 5395 TDZE 721 Apt Elev 721
--	------------------------	---

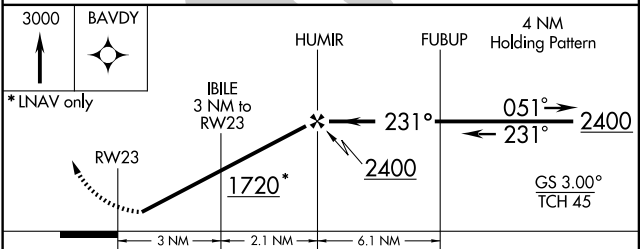
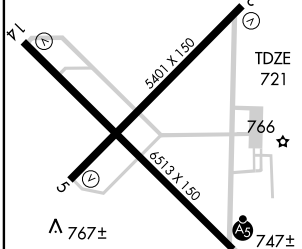
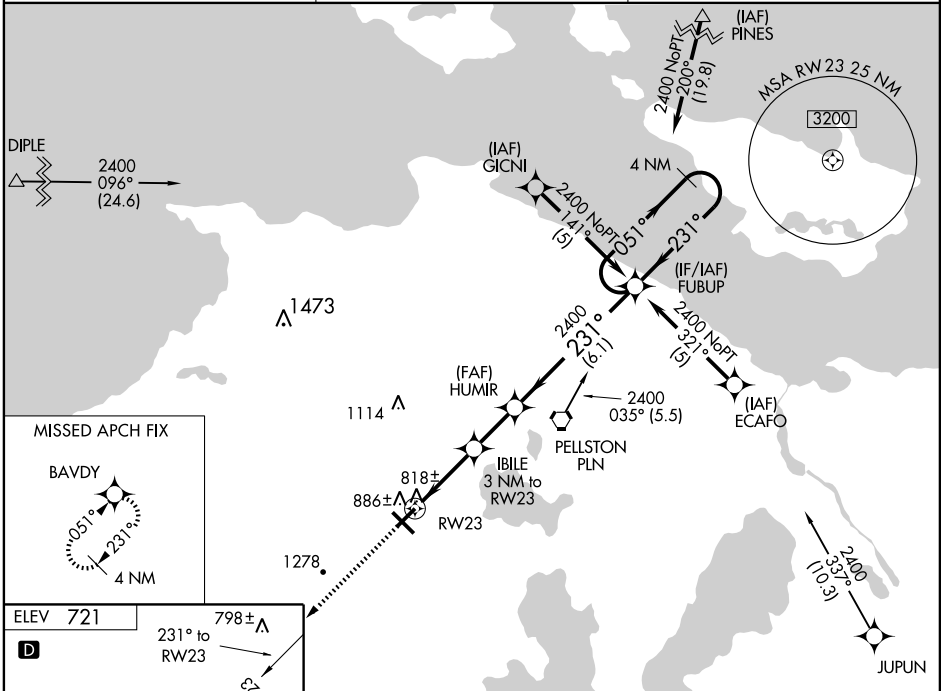
RNAV (GPS) RWY 23

PELLSTON RGNL AIRPORT OF EMMET COUNTY (PLN)

⚠ Baro-VNAV NA when using Harbor Springs altimeter setting.
⚠ For uncompensated Baro-VNAV systems, LNAV/VNAV NA below -16°C (4°F) or above 47°C (116°F). DME/DME RNP-0.3 NA. Visibility reduction by helicopters NA. When local altimeter setting not received, use Harbor Springs altimeter setting and increase all DA 28 feet, all MDA 40 feet, increase LNAV/VNAV all Cats visibility ¼ mile.

MISSED APPROACH: Climb to 3000 direct BAVDY and hold.

ASOS 119.025	MINNEAPOLIS CENTER 134.6 354.05	UNICOM 123.0 (CTAF) 0
------------------------	---	---------------------------------



CATEGORY	A	B	C	D
LPV DA		1057-1¼	336 (400-1¼)	
LNAV/VNAV DA		1109-1¼	338 (400-1¼)	
LNAV MDA	1240-1	519 (600-1)	1240-1½ 519 (600-1½)	1240-1¾ 519 (600-1¾)
CIRCLING	1260-1 539 (600-1)	1280-1 559 (600-1)	1280-1½ 559 (600-1½)	1420-2¼ 699 (700-2¼)

HIRL Rwy 14-32 **0**
 MIRL Rwy 5-23 **0**
 REIL Rwy 5, 14, and 23 **0**

PELLSTON, MICHIGAN
 Orig 09295

PELLSTON RGNL AIRPORT OF EMMET COUNTY (PLN)
 45°34'N - 84°48'W

RNAV (GPS) RWY 23

EC-1, 22 OCT 2009 to 19 NOV 2009

EC-1, 22 OCT 2009 to 19 NOV 2009