

VORTAC JPU <b>108.6</b> Chan <b>23</b>	APP CRS <b>211°</b>	Rwy Idg TDZE Apt Elev	<b>6781</b> <b>857</b> <b>858</b>
--	------------------------	-----------------------------	---

# VOR RWY 21

PARKERSBURG/MID-OHIO VALLEY RGNL (PKB)

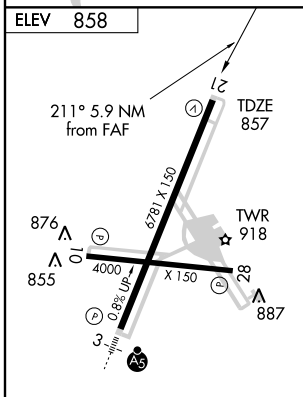
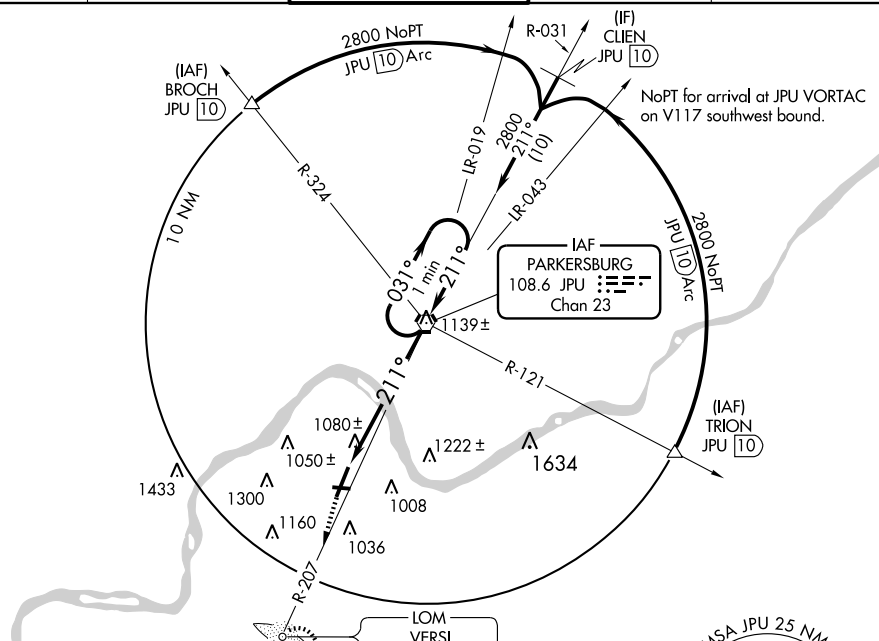
⚠ Visibility reduction by helicopters NA.  
 ⚠ When local altimeter setting not received, use Jackson County altimeter setting and increase all MDAs 100 feet. Increase Cat C/D visibilities ½ mile.  
 VDP NA when using Jackson County altimeter setting. ADF or DME Required.

MISSED APPROACH: Climb to 2600 via JPU VORTAC R-207 to VERSI LOM/JPU 12.3 DME and hold.

ATIS <b>124.35</b>	INDIANAPOLIS CENTER <b>125.55 398.9</b>	PARKERSBURG TOWER* <b>123.7</b> (CTAF) <b>257.8</b>	GND CON <b>121.7</b>	UNICOM <b>122.95</b>
-----------------------	--	--	-------------------------	-------------------------

NE-4, 22 OCT 2009 to 19 NOV 2009

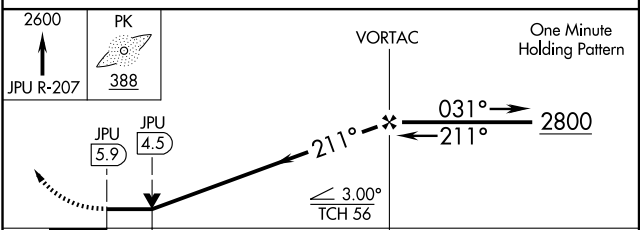
NE-4, 22 OCT 2009 to 19 NOV 2009



HIRL Rwy 3-21 and 10-28  
 REIL Rwy 10, 21 and 28

FAF to MAP 5.9 NM

Knots	60	90	120	150	180
Min:Sec	5:54	3:56	2:57	2:22	1:58



CATEGORY	A	B	C	D
S-21	1380-1 523 (600-1)		1380-1½ 523 (600-1½)	1380-1¾ 523 (600-1¾)
CIRCLING	1440-1 582 (600-1)		1440-1½ 582 (600-1½)	1460-2 602 (700-2)