

VOR/DME RWY 35

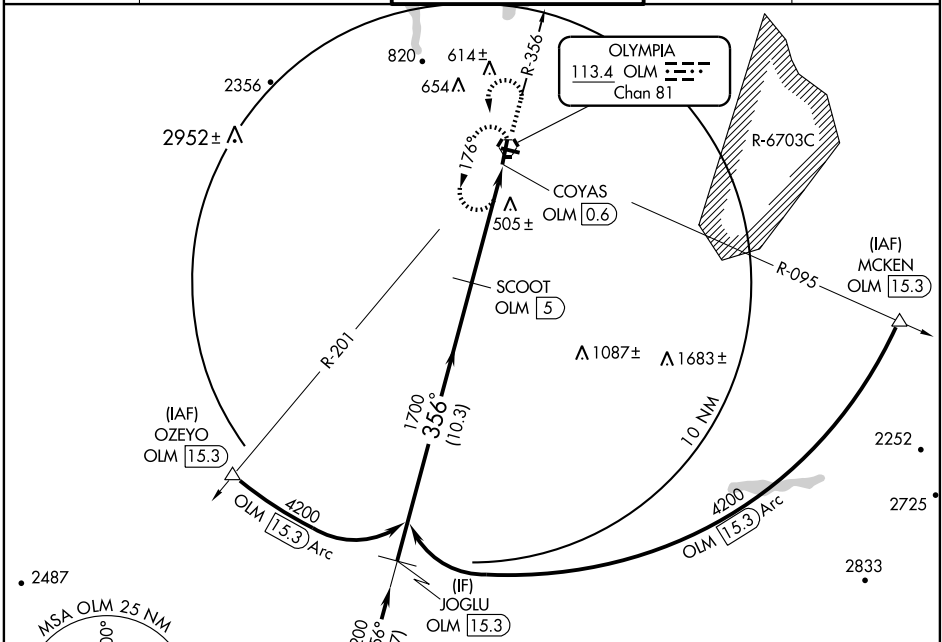
OLYMPIA RGNL (OLM)

VORTAC OLM 113.4 Chan 81	APP CRS 356°	Rwy Idg 5501 TDZE 208 Apt Elev 209
--	------------------------	---

⚠ When local altimeter setting not received, use Sanderson Field altimeter setting and increase all MDAs 60 feet; increase visibility S-35 Cats C/D ¼ mile and circling Cat D ¼ mile. Visibility reduction by helicopters NA.

MISSED APPROACH: Climb to 2400, then climbing left turn to 4000 direct OLM VORTAC and hold, continue climb-in-hold to 4000.

ATIS 135.725	SEATTLE APP CON 121.1 290.9	OLYMPIA TOWER* 124.4 (CTAF) 254.25	GND CON 121.6	UNICOM 122.95
------------------------	---------------------------------------	--	-------------------------	-------------------------



NW-1, 22 OCT 2009 to 19 NOV 2009

