

RNAV (GPS) RWY 35

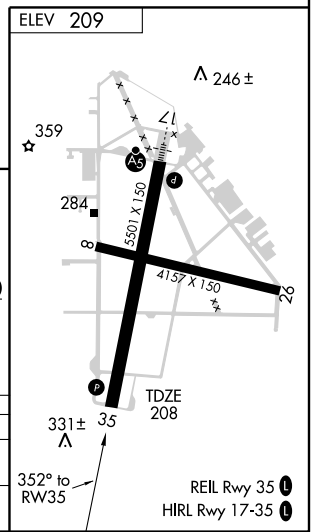
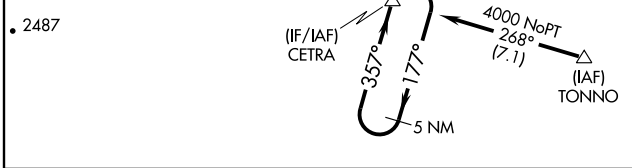
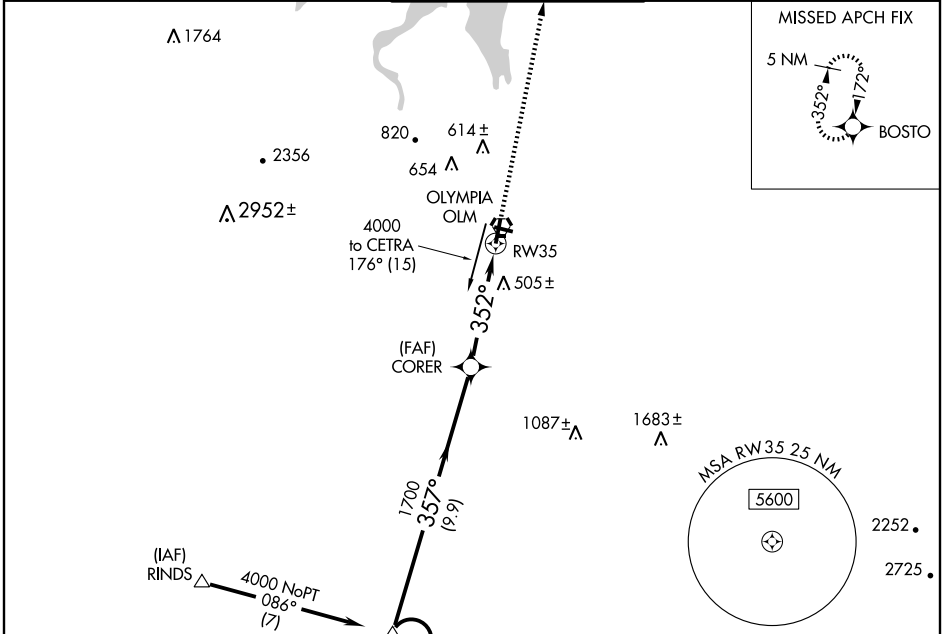
OLYMPIA RGNL (OLM)

APP CRS	Rwy Idg	5501
352°	TDZE	208
	Apt Elev	209

⚠ When local altimeter setting not received, use Sanderson Field altimeter setting and increase all MDAs 60 feet; increase visibility LNAV Cats C/D ¼ mile and circling Cat D ¼ mile.
⚠ DME/DME RNP-0.3 NA. Visibility reduction by helicopters NA.

MISSED APPROACH: Climb to 4000 direct BOSTO and hold, continue climb-in-hold to 4000.

ATIS 135.725	SEATTLE APP CON 121.1 290.9	OLYMPIA TOWER* 124.4 (CTAF) 254.25	GND CON 121.6	UNICOM 122.95
------------------------	---------------------------------------	--	-------------------------	-------------------------



4000	BOSTO	CETRA	5 NM Holding Pattern
RW35	3.04° TCH 50	CORER	177° → 4000
4.5 NM	352°	9.9 NM	357° ← 357°

CATEGORY	A	B	C	D
LNAV MDA	760-1	552 (600-1)	760-1½ 552 (600-1½)	760-1¾ 552 (600-1¾)
CIRCLING	760-1	551 (600-1)	820-1¾ 611 (700-1¾)	860-2 651 (700-2)

NW-1, 22 OCT 2009 to 19 NOV 2009

NW-1, 22 OCT 2009 to 19 NOV 2009