

RNAV (GPS) RWY 17

OLYMPIA RGNL (OLM)

WAAS CH 45599 W17A	APP CRS 172°	Rwy Idg 5501 TDZE 207 Apt Elev 209
--	------------------------	---

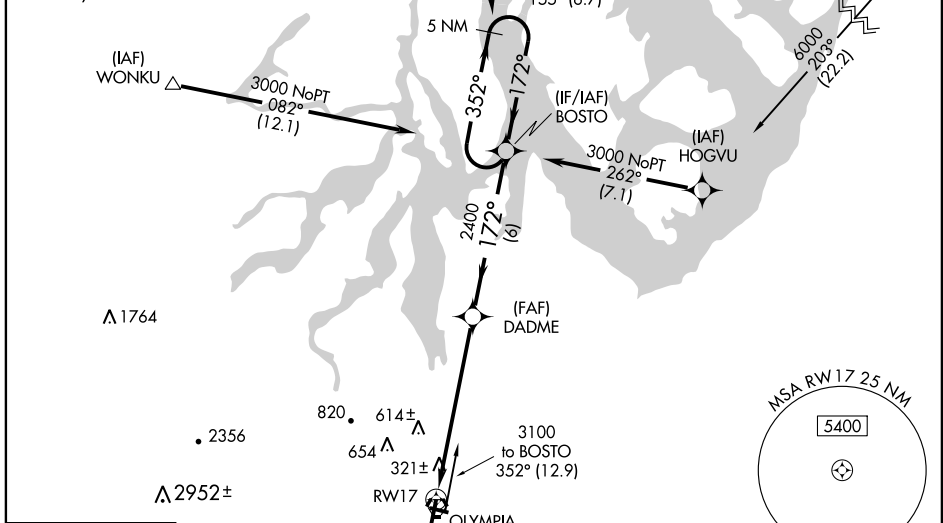
⚠ DME/DME RNP-0.3 NA. For inoperative MALSR, increase LPV visibility all Cats to 1¼.
⚠ For uncompensated Baro-VNAV systems, LNAV/VNAV NA below -1.5°C (5°F) or above 49°C (120°F). When local altimeter setting not received, use Sanderson Field altimeter setting and increase all DA 53 feet and all MDA 60 feet; increase LPV and LNAV/VNAV visibility all Cats, LNAV Cats C/D and circling visibility Cats C/D ¼ mile. VDP and Baro-VNAV NA when using Sanderson Field altimeter setting.



MISSED APPROACH: Climb to 4000 direct CORER and via 177° track to CETRA and hold, continue climb-in-hold to 4000.

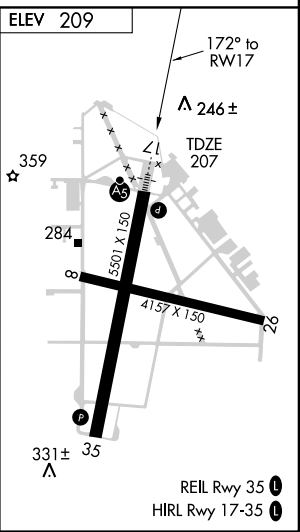
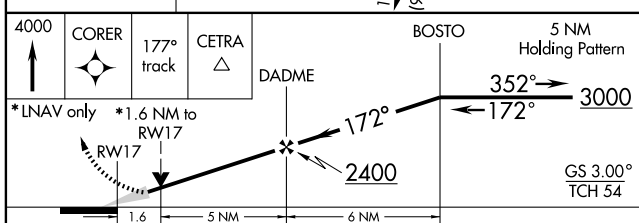
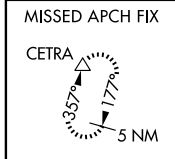
ATIS 135.725	SEATTLE APP CON 121.1 290.9	OLYMPIA TOWER* 124.4 (CTAF) 254.25	GND CON 121.6	UNICOM 122.95
------------------------	---------------------------------------	--	-------------------------	-------------------------

Procedure NA for arrivals at SEA VORTAC on airway radials 168 CW 178.



NW-1, 22 OCT 2009 to 19 NOV 2009

NW-1, 22 OCT 2009 to 19 NOV 2009



CATEGORY	A	B	C	D
LPV DA	590-¾ 383 (400-¾)			
LNAV/VNAV DA	636-1 429 (500-1)			
LNAV MDA	760-½ 553 (600-½)	760-1 553 (600-1)	760-1¼ 553 (600-1¼)	
CIRCLING	760-1 551 (600-1)	820-1¾ 611 (700-1¾)	860-2 651 (700-2)	