

# ILS or LOC RWY 17

OLYMPIA RGNL (OLM)

LOC I-OLM <b>111.9</b>	APP CRS <b>172°</b>	Rwy Ldg <b>5501</b>
		TDZE <b>207</b>
		Apt Elev <b>209</b>

**⚠** RADAR or DME required. When local altimeter setting not received, use Sanderson Field altimeter setting and increase all DA 53 feet and all MDA 60 feet; increase circling visibility Cat D ¼ mile. For inoperative MALSR, when using Sanderson Field altimeter setting, increase S-ILS 17 visibility to 1 mile.

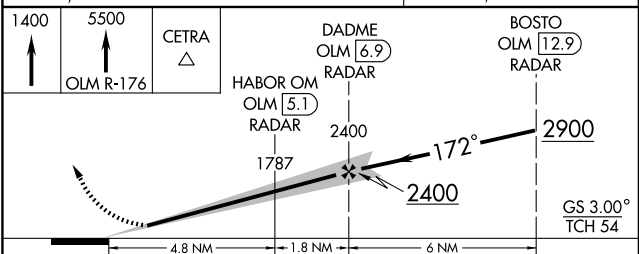
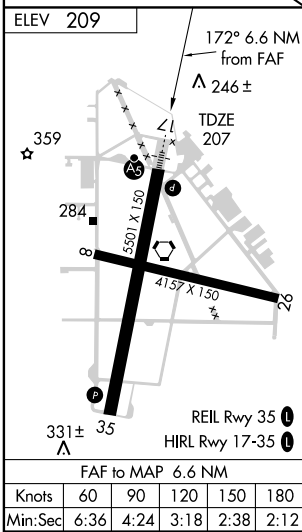
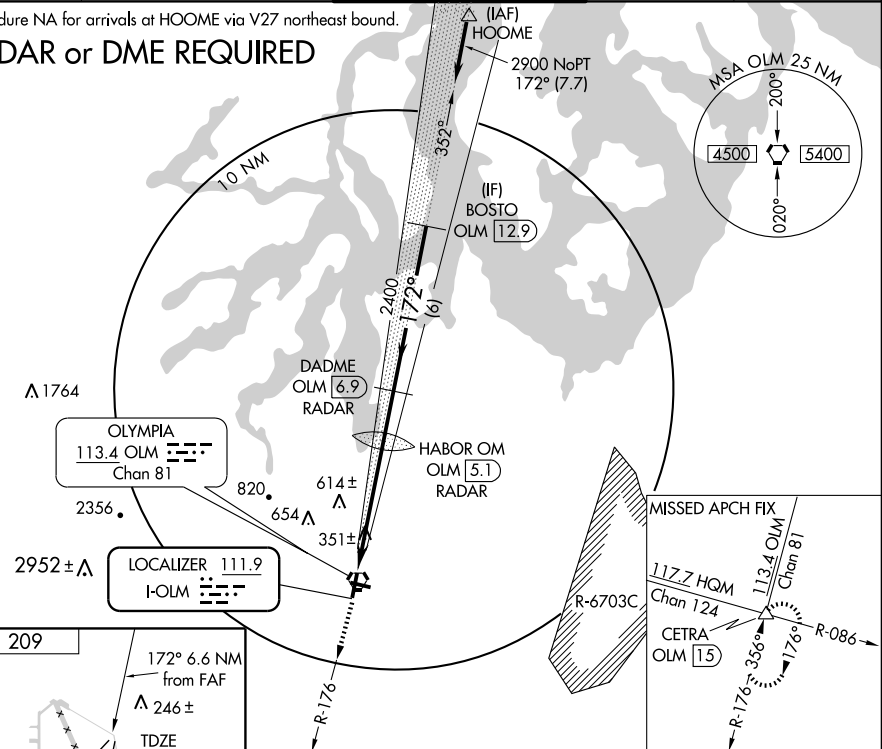
MALSR  
AS

**MISSED APPROACH:** Climb to 1400, then continue climb to 5500 via OLM VORTAC R-176 to CETRA INT/OLM 15 DME and hold, continue climb-in-hold to 5500.

ATIS <b>135.725</b>	SEATTLE APP CON <b>121.1 290.9</b>	OLYMPIA TOWER* <b>124.4 (CTAF) 254.25</b>	GND CON <b>121.6</b>	UNICOM <b>122.95</b>
------------------------	---------------------------------------	--	-------------------------	-------------------------

Procedure NA for arrivals at HOOME via V27 northeast bound.

## RADAR or DME REQUIRED



CATEGORY	A	B	C	D
S-ILS 17	414-½ 207 (300-½)			
S-LOC 17	640-½	433 (500-½)	640-¾ 433 (500-¾)	640-1 433 (500-1)
CIRCLING	720-1	511 (600-1)	820-1¾ 611 (700-1¾)	860-2 651 (700-2)

NW-1, 22 OCT 2009 to 19 NOV 2009

NW-1, 22 OCT 2009 to 19 NOV 2009