

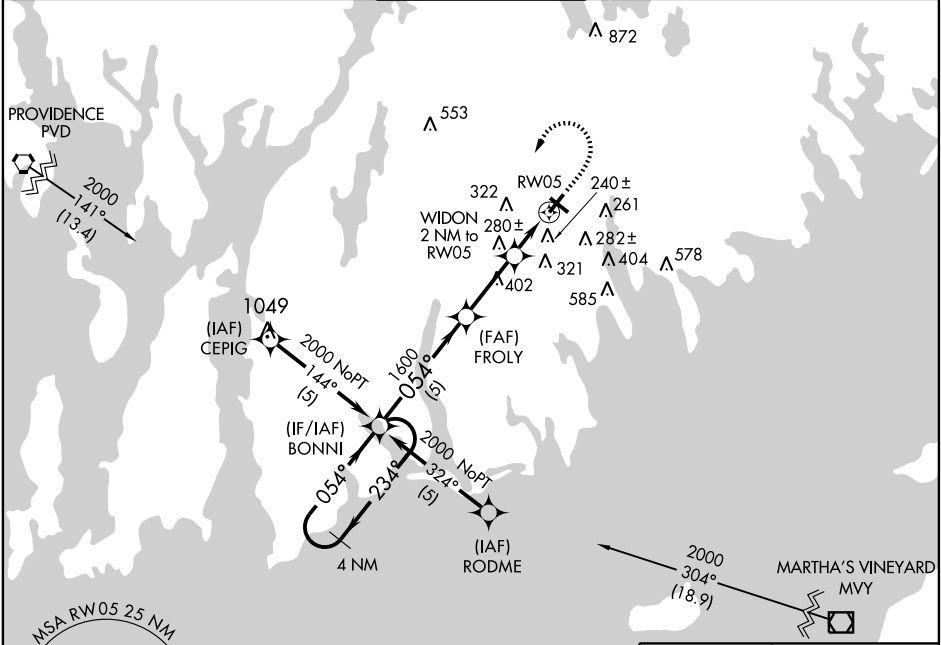
RNAV (GPS) RWY 5

NEW BEDFORD RGNL (E.W.B)

APP CRS	Rwy Idg	4997
054°	TDZE	72
	Apt Elev	80

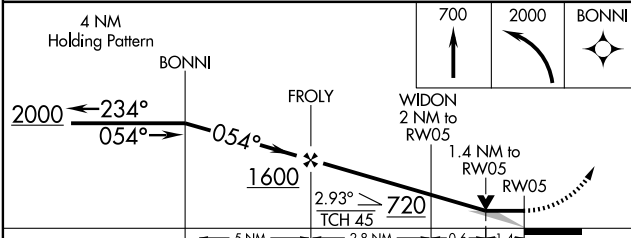
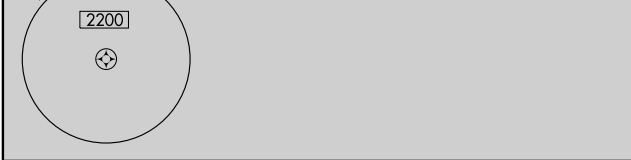
<p>NA GPs or RNP-0.3 required. DME/DME RNP-0.3 NA.</p>	<p>MALSR</p>	<p>MISSED APPROACH: Climb to 700 then climbing left turn to 2000 direct BONNI WP and hold.</p>
---	--------------	--

<p>ATIS</p> <p>126.85</p>	<p>PROVIDENCE APP CON*</p> <p>128.7 269.525</p>	<p>NEW BEDFORD TOWER*</p> <p>118.1 (CTAF) 239.0</p>	<p>GND CON</p> <p>121.9</p>	<p>UNICOM</p> <p>122.95</p>
----------------------------------	--	--	------------------------------------	------------------------------------



NE-1, 22 OCT 2009 to 19 NOV 2009

NE-1, 22 OCT 2009 to 19 NOV 2009



ELEV	80
------	----

MIRA Rwy 14-32 **1**
 HIRL Rwy 5-23 **1**
 REIL Rwy 32 **1**

CATEGORY	A	B	C	D
LNAV MDA	540/24 468 (500-½)		540/40 468 (500-¾)	540/50 468 (500-1)
CIRCLING	620-1 540 (600-1)		560 (600-1½)	560 (600-2)